

Florida Department of Transportation

June 2015

Thomasville Road (US 319/ SR 61) Planning Study



Agenda

Introduction

A. Previous Studies

B. Project Area

Purpose and Need

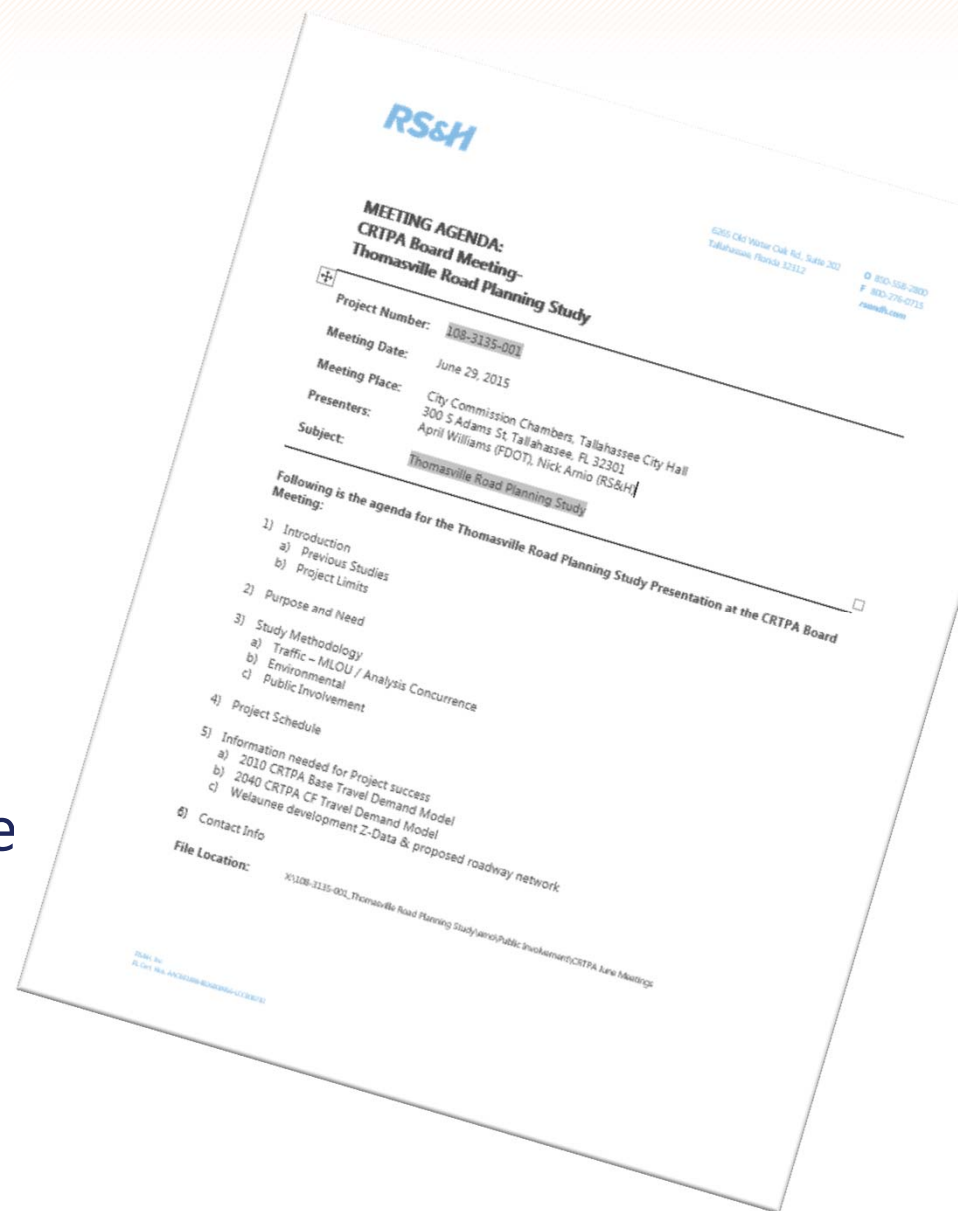
Study Methodology

A. Traffic – MLOU/ Analysis Concurrence

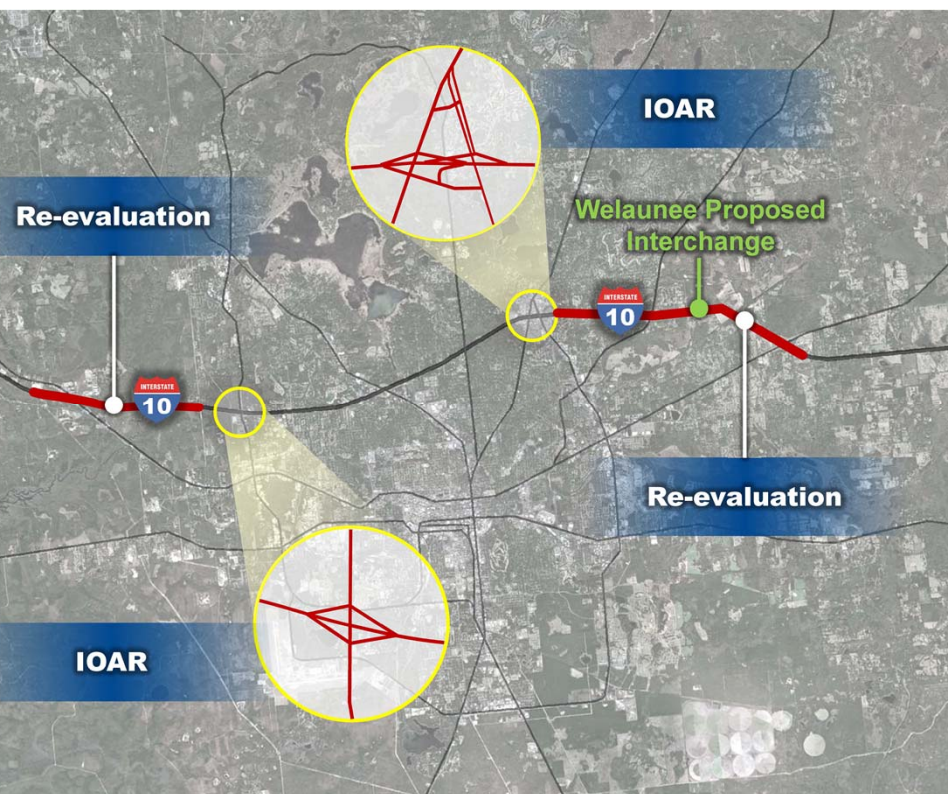
B. Environmental

C. Public Involvement

Project Schedule



Previous Studies



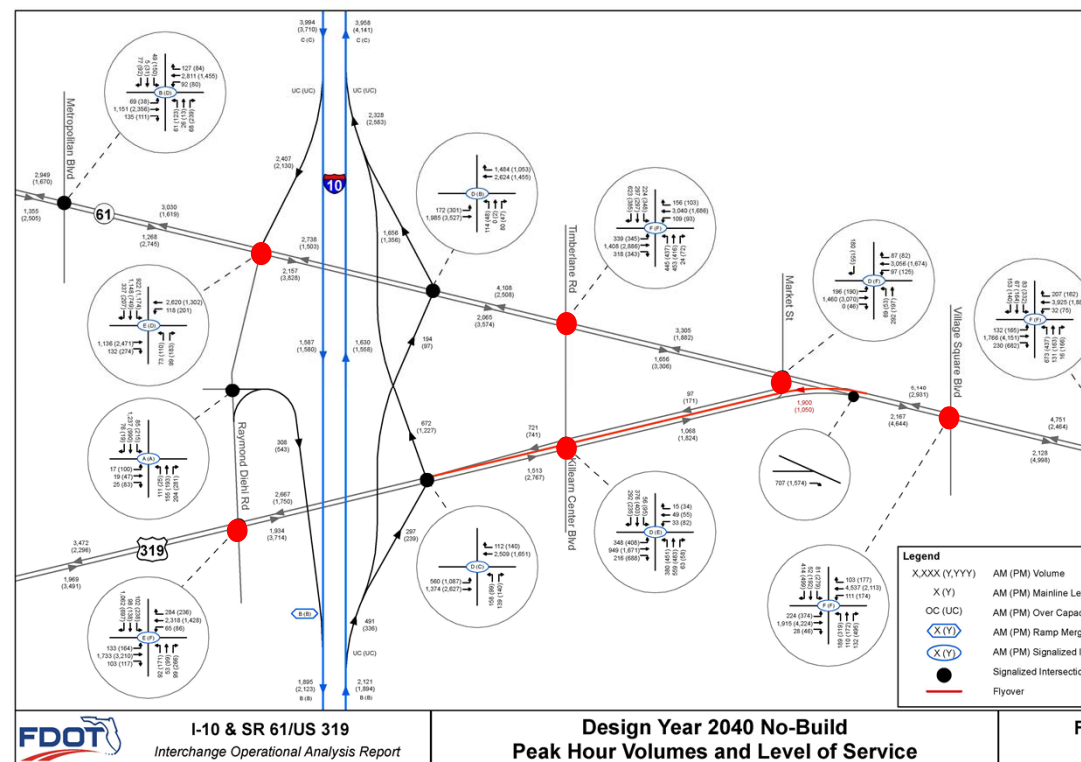
2013

2014

2015

I-10 PD&E Re-evaluations

IOARs Approved



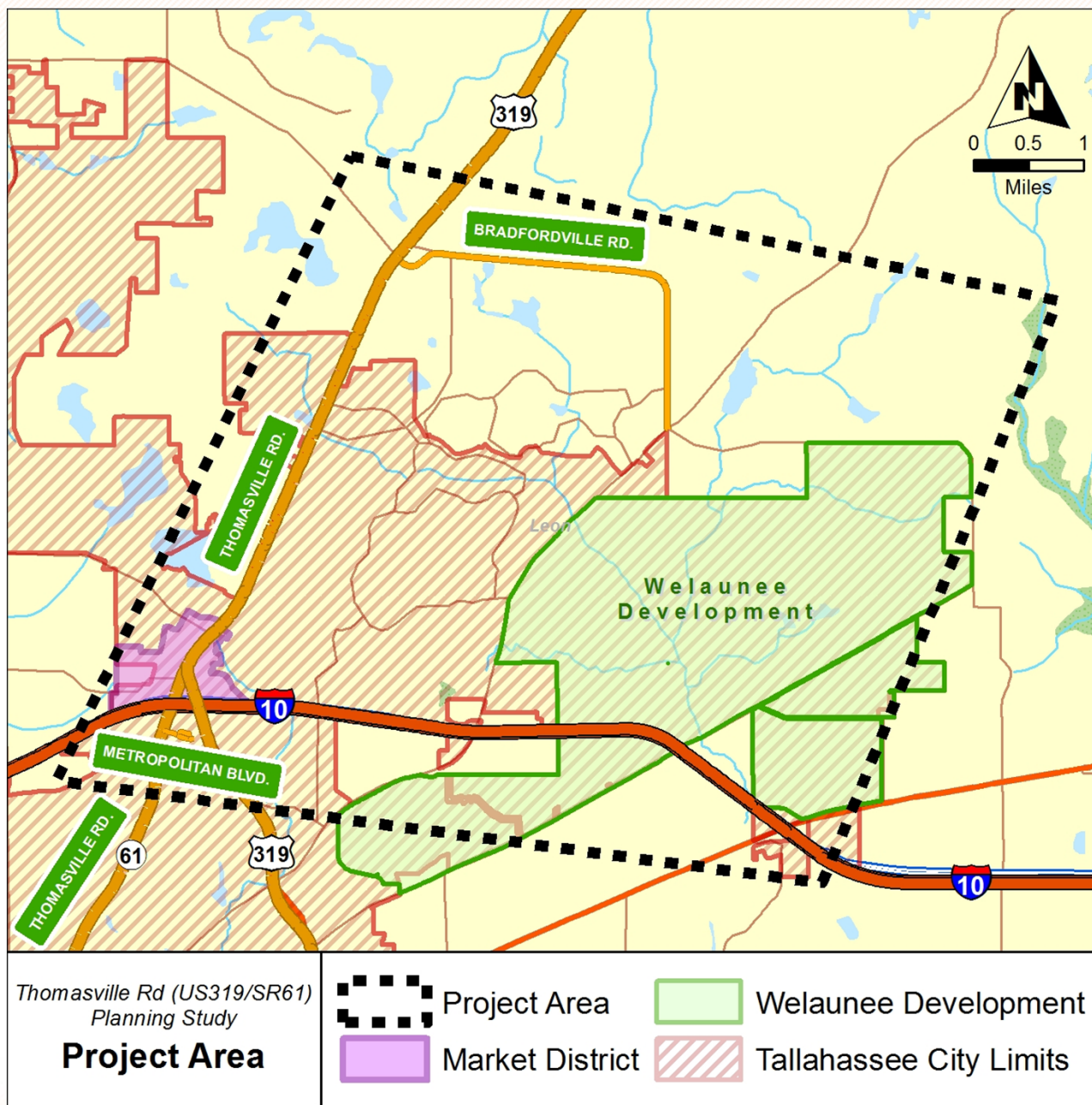
2016

2017

2018

Thomasville Rd. Planning Study

Thomasville Rd. PD&E Study



Purpose of the Study

Assess traffic congestion on Thomasville Road within the Study Limits

Evaluate mobility improvements that provide sufficient congestion relief to Thomasville Road

Evaluate Alternative improvements that enable Thomasville Road to operate at LOS D or better in the year 2040

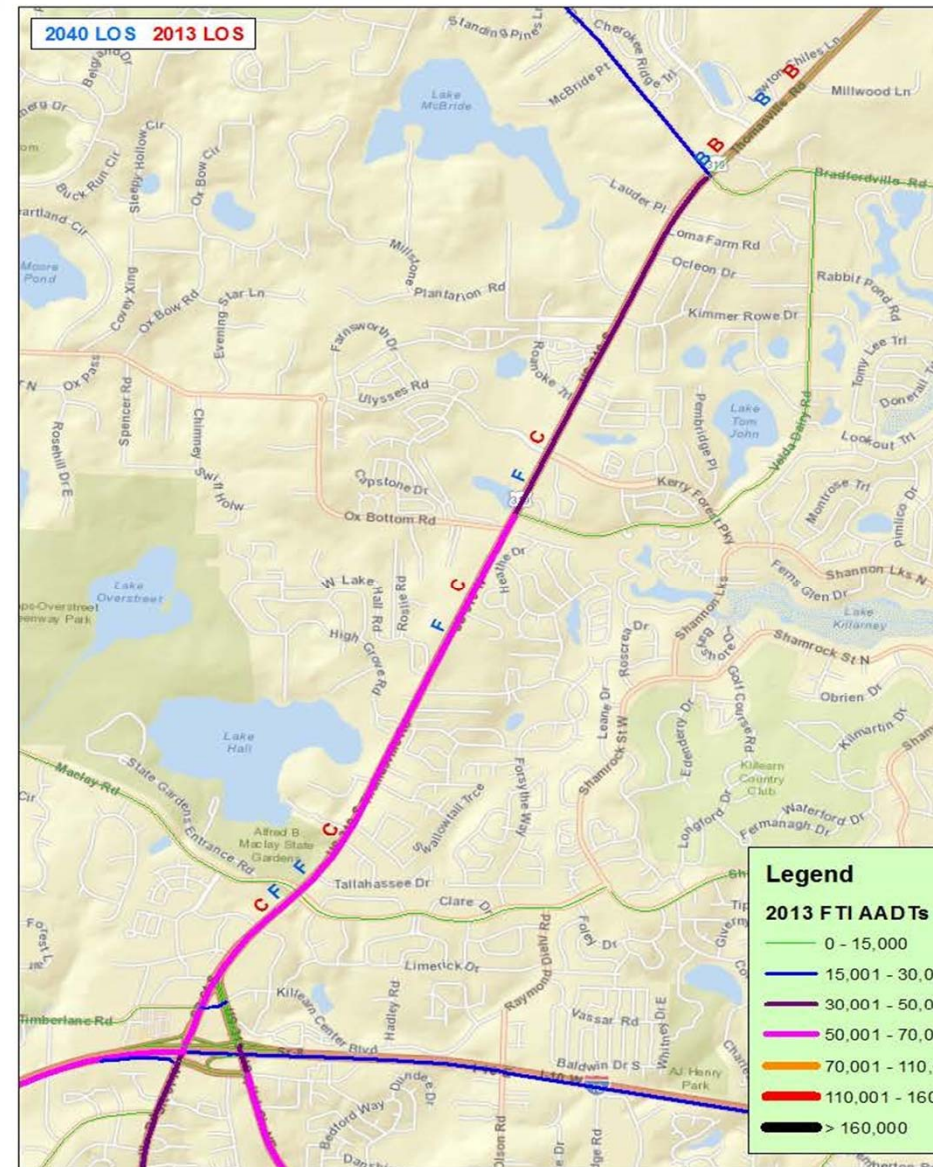


Need for the Project

Several Study signalized intersections are projected to operate at LOS F in 2040

Thomasville Road is projected to be over capacity in 2040

Growth in the NE Tallahassee is outpacing planned infrastructure improvements





Study Methodology

Methodology Letter of Understanding

Review selected corridors for potential improvement

Review the current and projected traffic for the study area based on several scenarios

Determine the best corridor for future improvement to relieve traffic congestion on Thomasville Road

Interchange Access Request (Interchange Operational Analysis Report)	
Methodology Letter of Understanding (MLOU)	
Interstate 10 at SR 61 and US 319, Tallahassee, FL	
	
Florida Department of Transportation District 3	
Letter of Understanding (MLOU)	
Thomasville Highway) and US 319 (Capital Circle N.E.)	
Engineering and Operational Acceptability	
Route approval of the Interchange Access Request or commitment of reference as the study progresses and is intended to establish	
 April G. Williams, P.E. District 3 Project Development Engineer	5/3/14 Date
 Scott Golden, P.E. FDOT District 3	5/9/14 Date
Interchange Review Coordinator	 Martha Hodgson Florida Department of Transportation
Program Operations Engineer	 Chad Thompson Federal Highway Administration
	5/12/14 Date

The following agencies attended a CRTPA Staff Kickoff Meeting on May 14, 2015 to discuss the Thomasville Road Planning Study:

- FDOT District 3
- CRTPA
- Blueprint 2000
- Tallahassee Leon County Planning Department

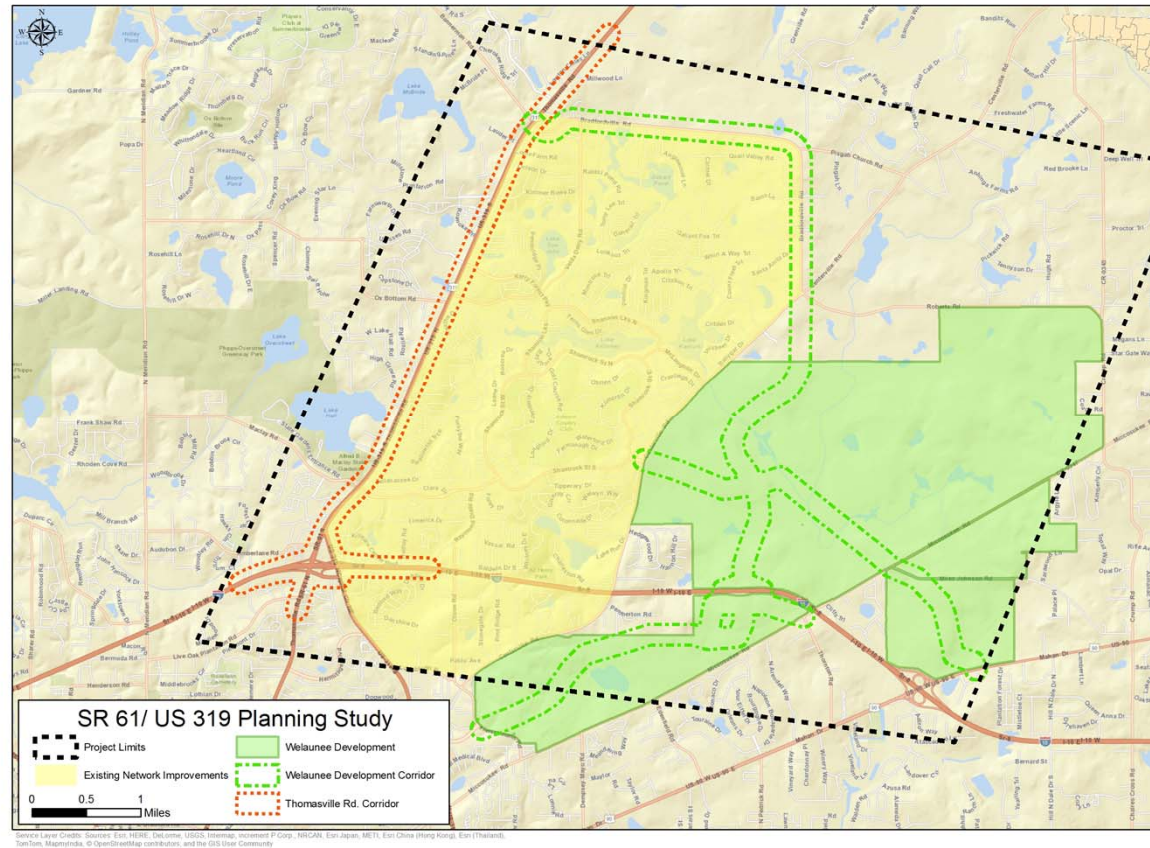
Alternative Corridors

Expanded study limits to include Welaunee development

Widen Existing Thomasville Road (Orange Corridor)

New Roadway Alignment (Green Corridor)

Improve "Existing Network" (Yellow Shaded Area)



Alternative Corridors

Do-Build: E+C

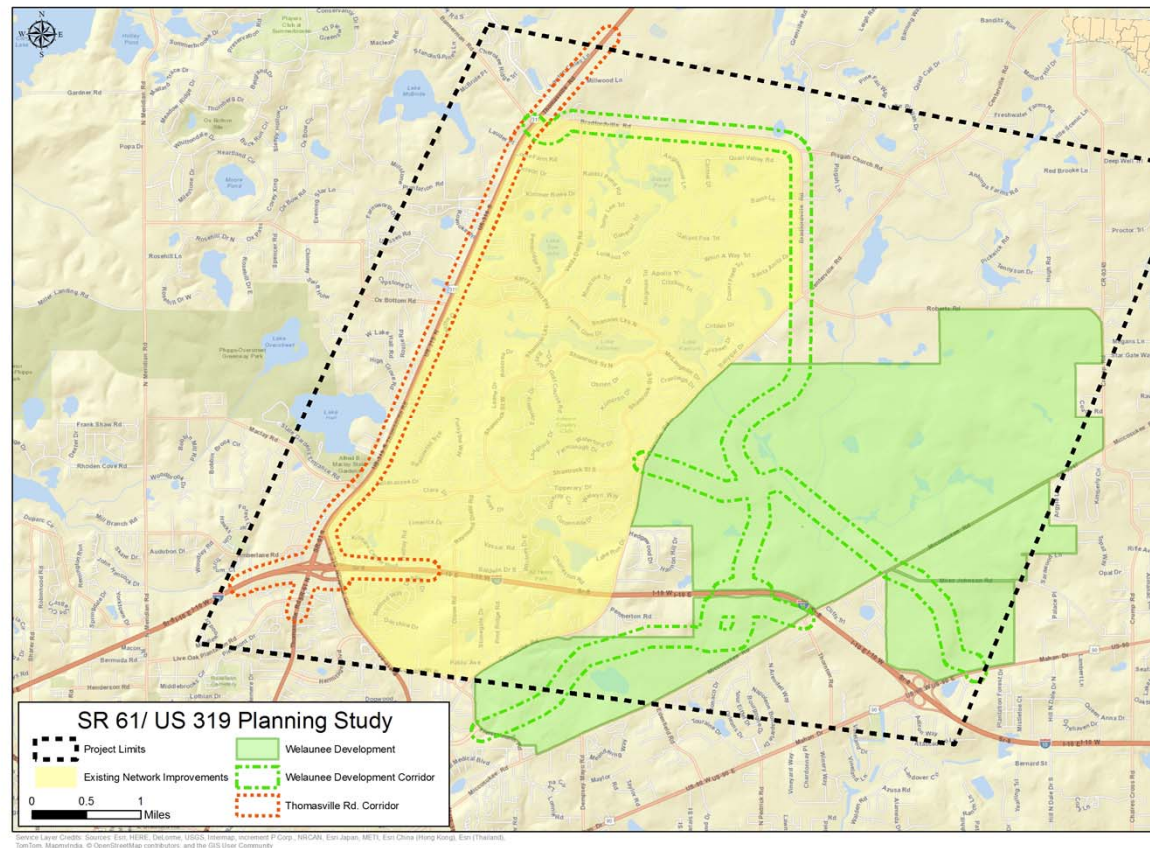
Build Alt. 1: 2040 CF w/ Welaunee

Build Alt. 2: 2040 CF w/ Welaunee
& Build Thomasville Rd.

Build Alt. 3: 2040 CF w/ Welaunee
& Build Welaunee

Build Alt. 4: 2040 CF w/o
Welaunee & Build Thomasville

Existing Network: Constraint
Mapping



Study Methodology

Environmental Screening

Area of Interest Tool

Cultural Resources Technical Memo

Contamination Screening Report

The screenshot displays the Florida Department of Transportation (FDOT) Centennial website. At the top, the FDOT logo is visible with the text "Centennial FDOT 1915 ★ 2015". To the right, the text "Florida Department of TRANSPORTATION" is displayed. A search bar labeled "Search FDOT..." and a link for "E-Updates | FL511" are also present. Below the header, a navigation bar includes links for "Home", "About FDOT", "Contact Us", "Offices", "Maps & Data", and "Performance". The main content area is titled "Environmental Screening Tool". Below this, the "etdm" logo is shown with the tagline "Efficient Transportation Decision Making". A navigation menu includes "Welcome", "ETDM Program Information", "Project Information", and "ETDM Contacts". The "Project Search" section is active, showing a "new search" button and a list of search options: "Project Number", "Project Name", "Planning Organization", "Source", "District", "Area of Effect", and "Project Phase". The "Welcome!" section contains a "Getting Started" paragraph, an "About ETDM" section, a "Stay Connected" section, and a "Finding a Project" section. A map of Florida is displayed on the right side of the page, showing major highways and project locations. The FDOT logo is also visible in the bottom right corner of the map area.

Study Methodology

Public Involvement

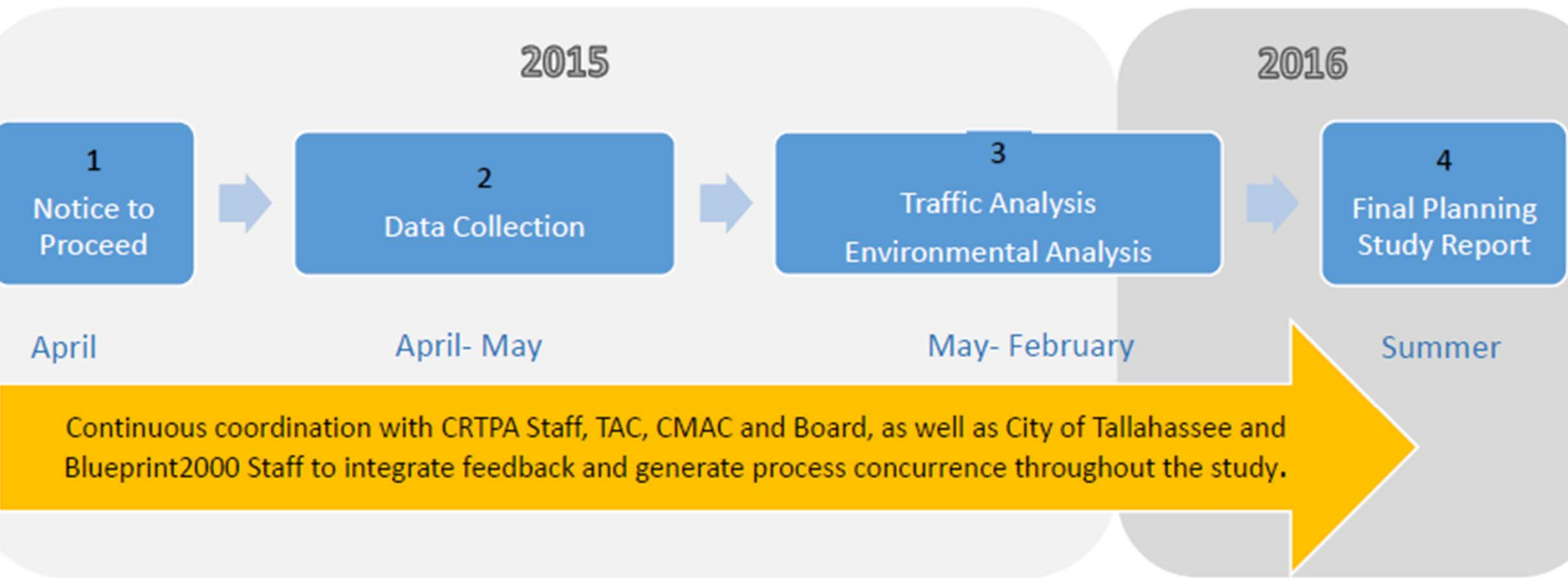
CRTPA TAC, CMAC & Board Meetings

Killearn Estates HOA

Killearn Lakes HOA

Project Website under development





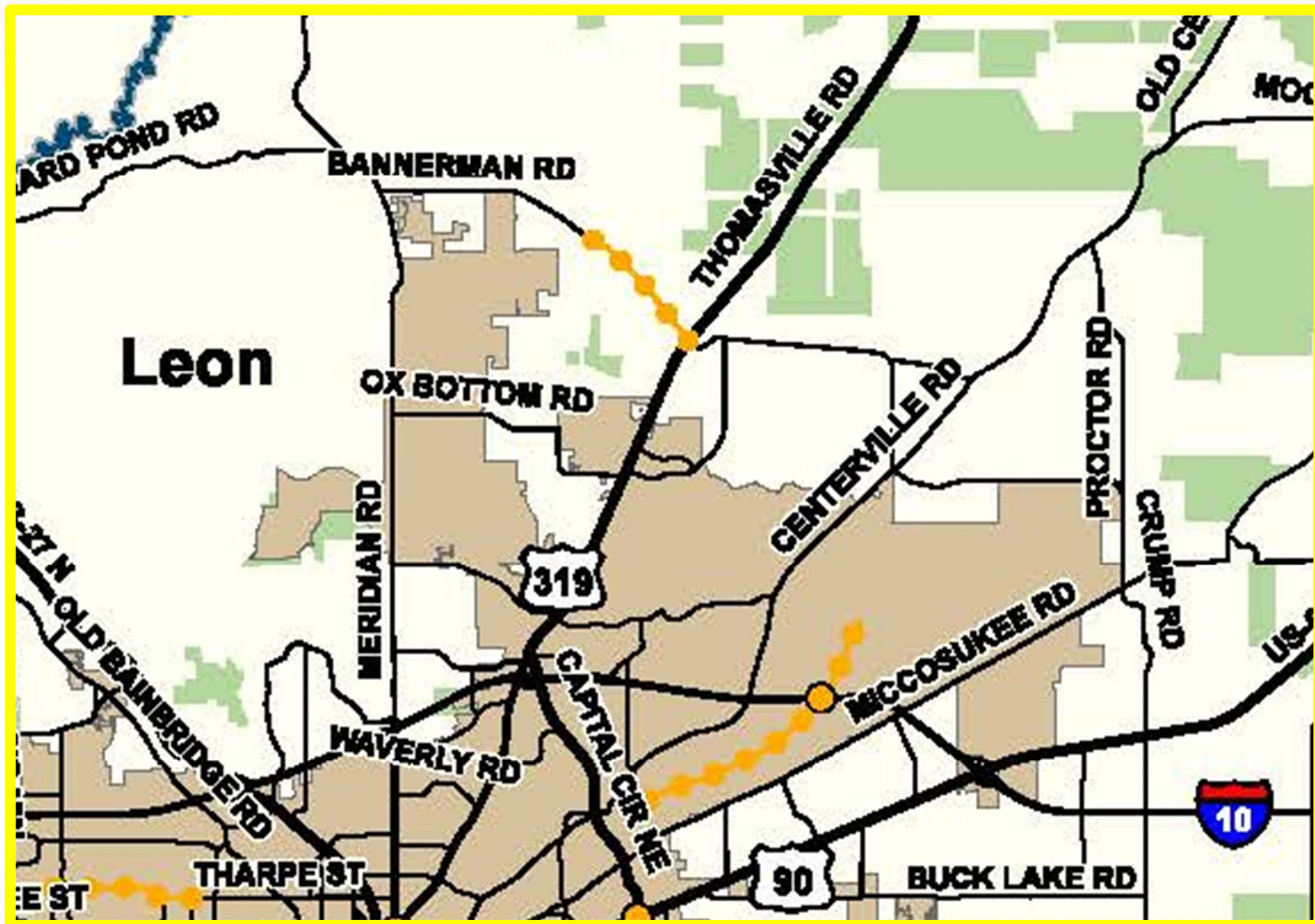
We look forward to working with you!

April Williams, PE
Project Development Engineer
FDOT, District 3
1074 Highway 90
Chipley, FL 32428
850-330-1625
April.Williams@dot.state.fl.us

Nick Arnio, PE, PTOE
Project Manager
RS&H
13750 San Pedro Ave., Suite 300
San Antonio, TX 78232
Phone: 210-301-4833
Nicholi.Arnio@rsandh.com

Lauren Boes, PE
Deputy Project Manager
RS&H
6265 Old Water Oak Rd., Suite 202
Tallahassee, FL 32312
Phone: 850-558-2800
Lauren.Boes@rsandh.com





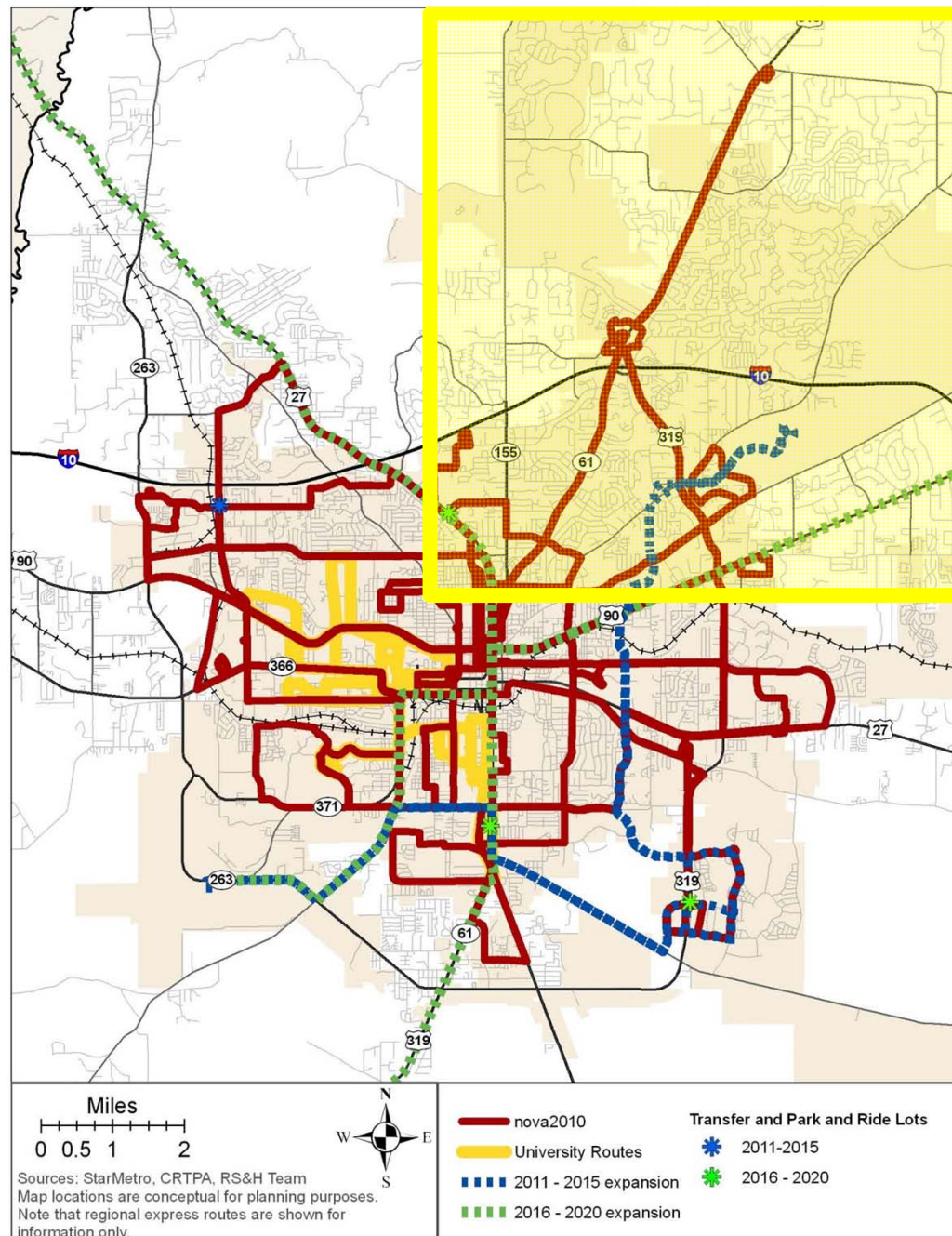


Figure 15. Recommended Service Improvements

nova2010

University Routes

2011 - 2015 expansion

2016 - 2020 expansion

Transfer and Park and Ride Lots



2011-2015



2016 - 2020

