



Florida Department of Transportation

March 2016 Project Update

Thomasville Road (US 319/ SR 61) Planning Study



Progress Update Since November 2015

Engineering

- 2040 No-Build
- 2040 Build Alternatives

Environmental

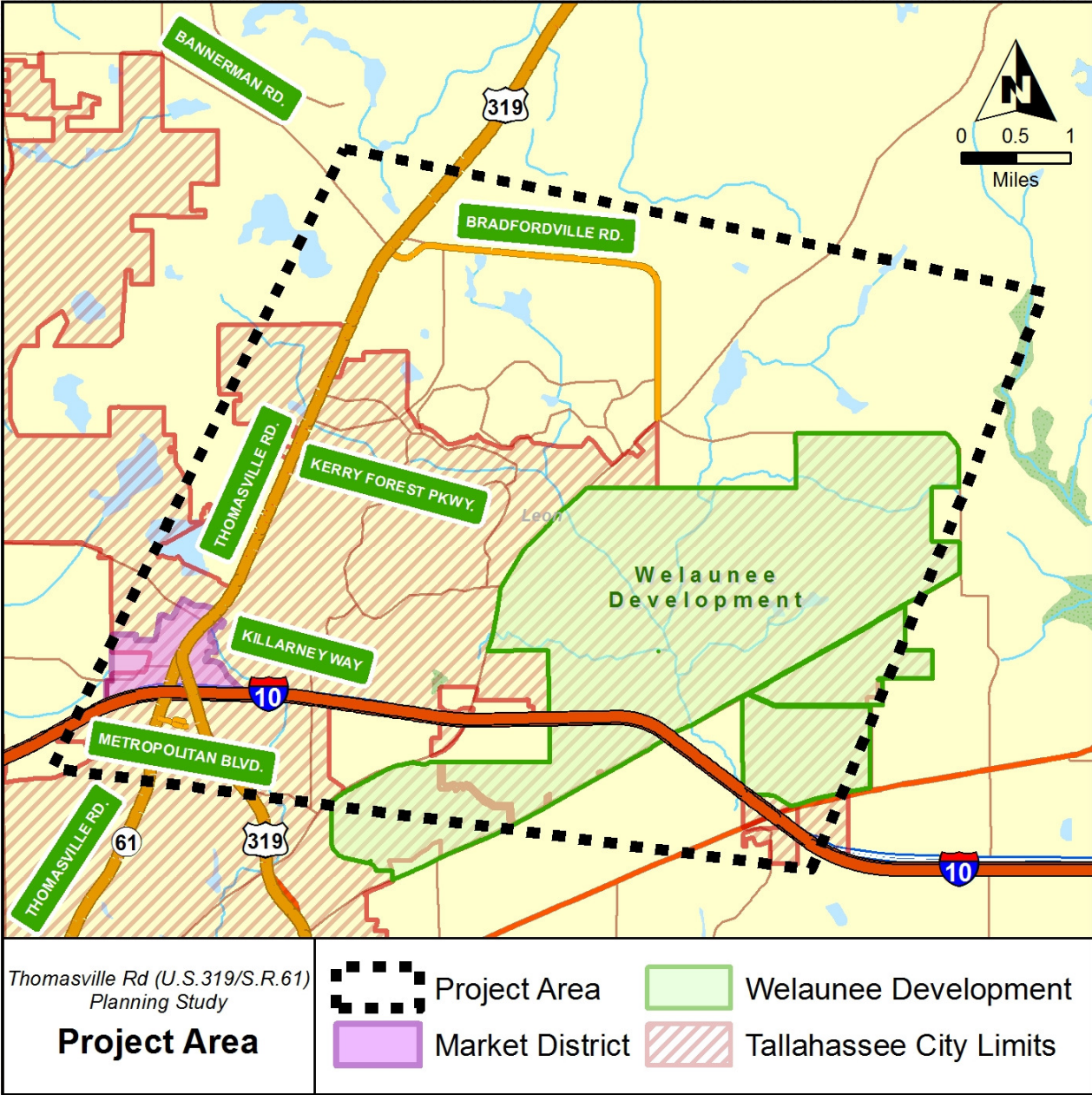
- Draft Soil Survey Reports
- Draft Cultural Resources Analysis
- Draft Listed Species and Wetland Evaluation

Coordination

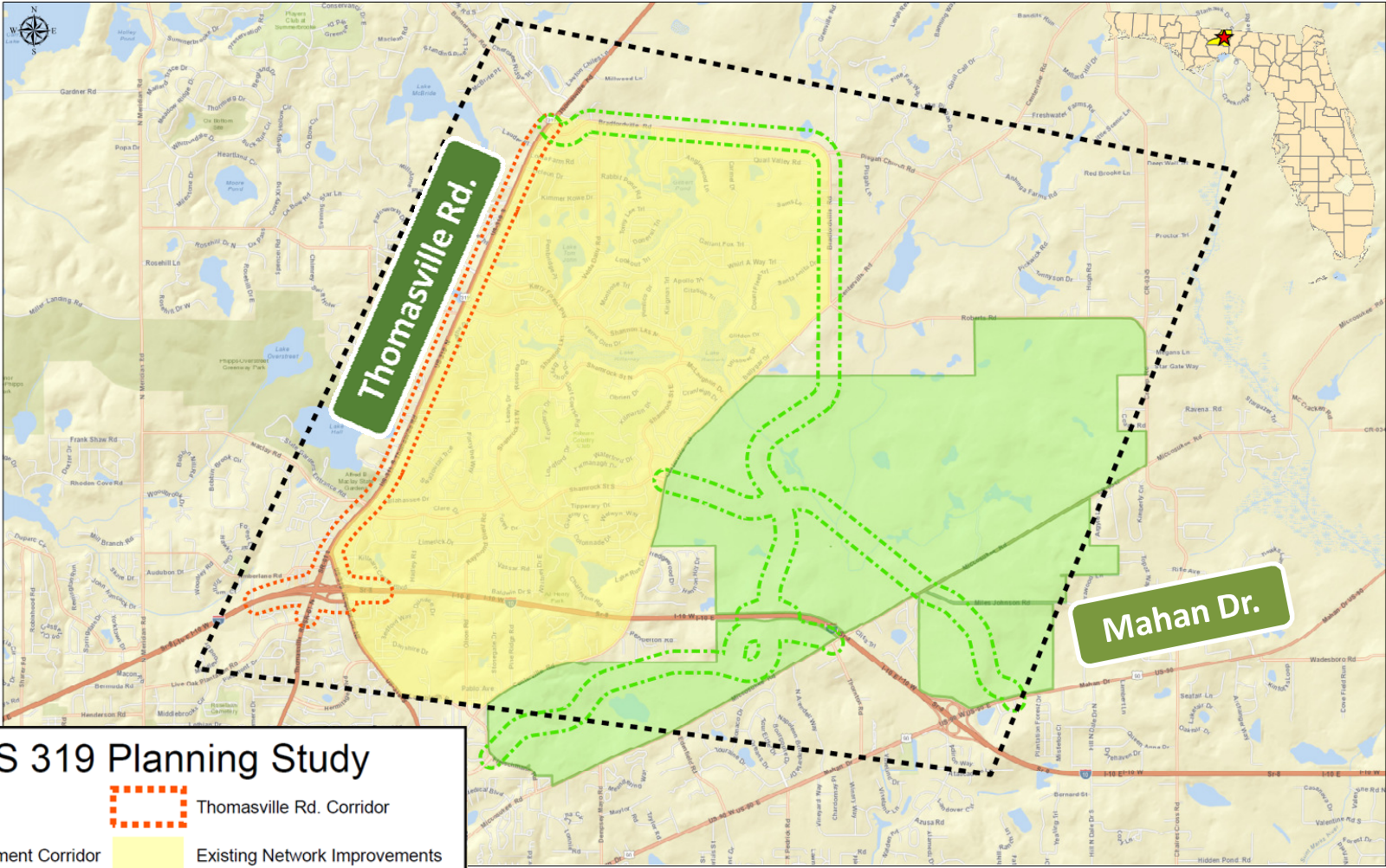
- Methodology Letter of Understanding (MLOU) complete
- HOA continued outreach

Project Overview




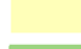
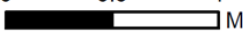

- Study Area
- Purpose and Need



Project Corridors



SR 61/ US 319 Planning Study

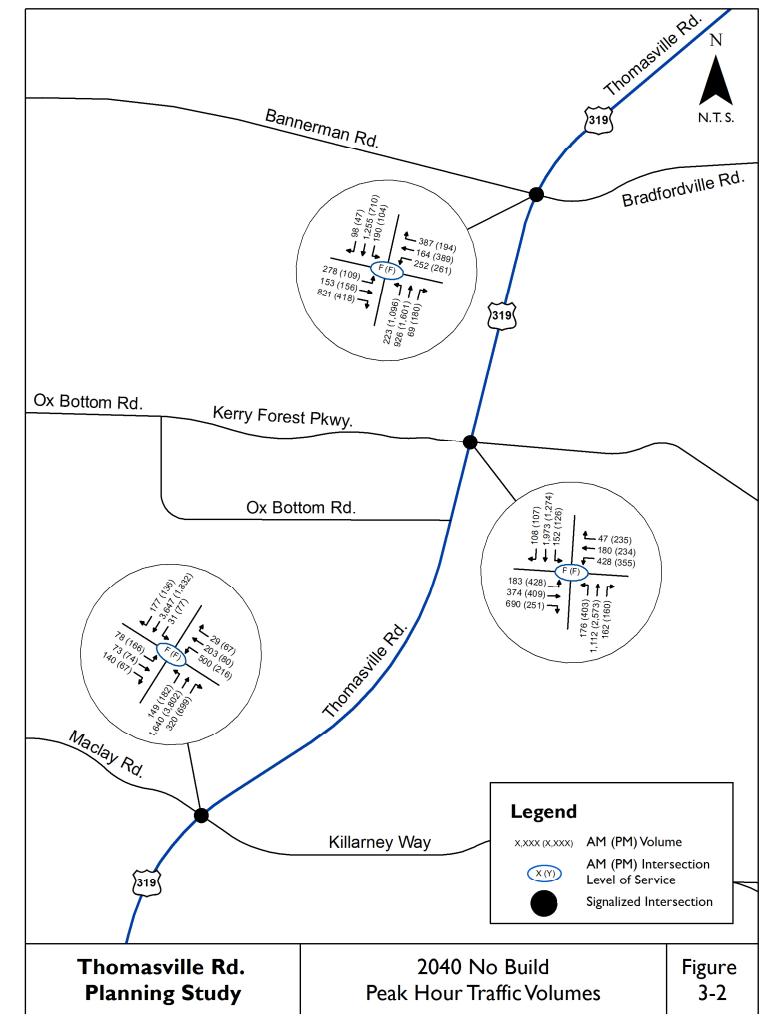
 Project Limits	 Thomasville Rd. Corridor
 Welaunee Development Corridor	 Existing Network Improvements
 0 0.5 1 Miles	 Welaunee Development



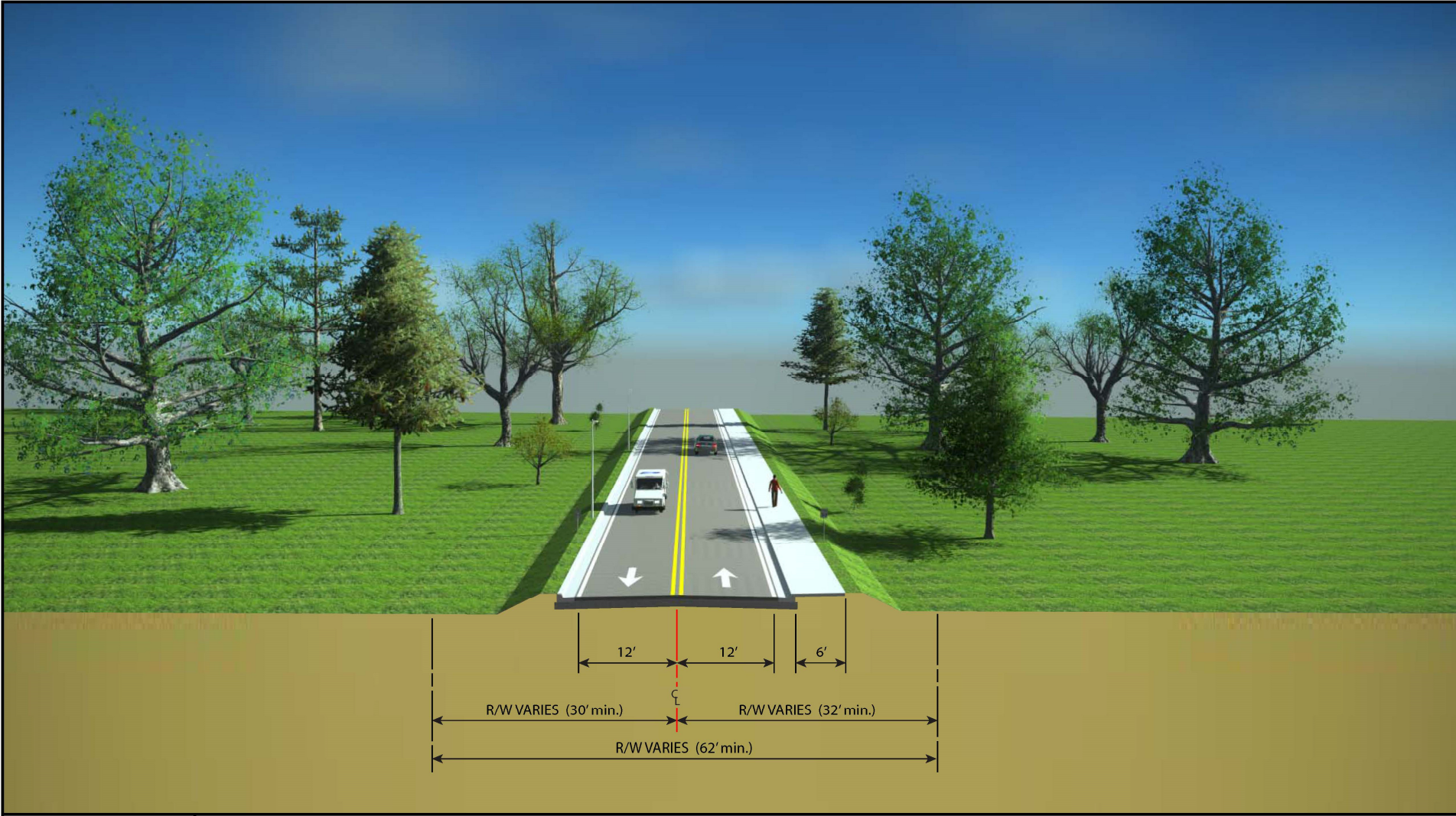
Thomasville Road No-Build Alternative Traffic

Intersection	2015 LOS* AM (PM)	2040 LOS* AM (PM)
Killarney Way/ Maclay Blvd.	E (E)	F (F)
Kerry Forest	E (E)	F (F)
Bannerman/ Bradfordville	D (D)	F (F)

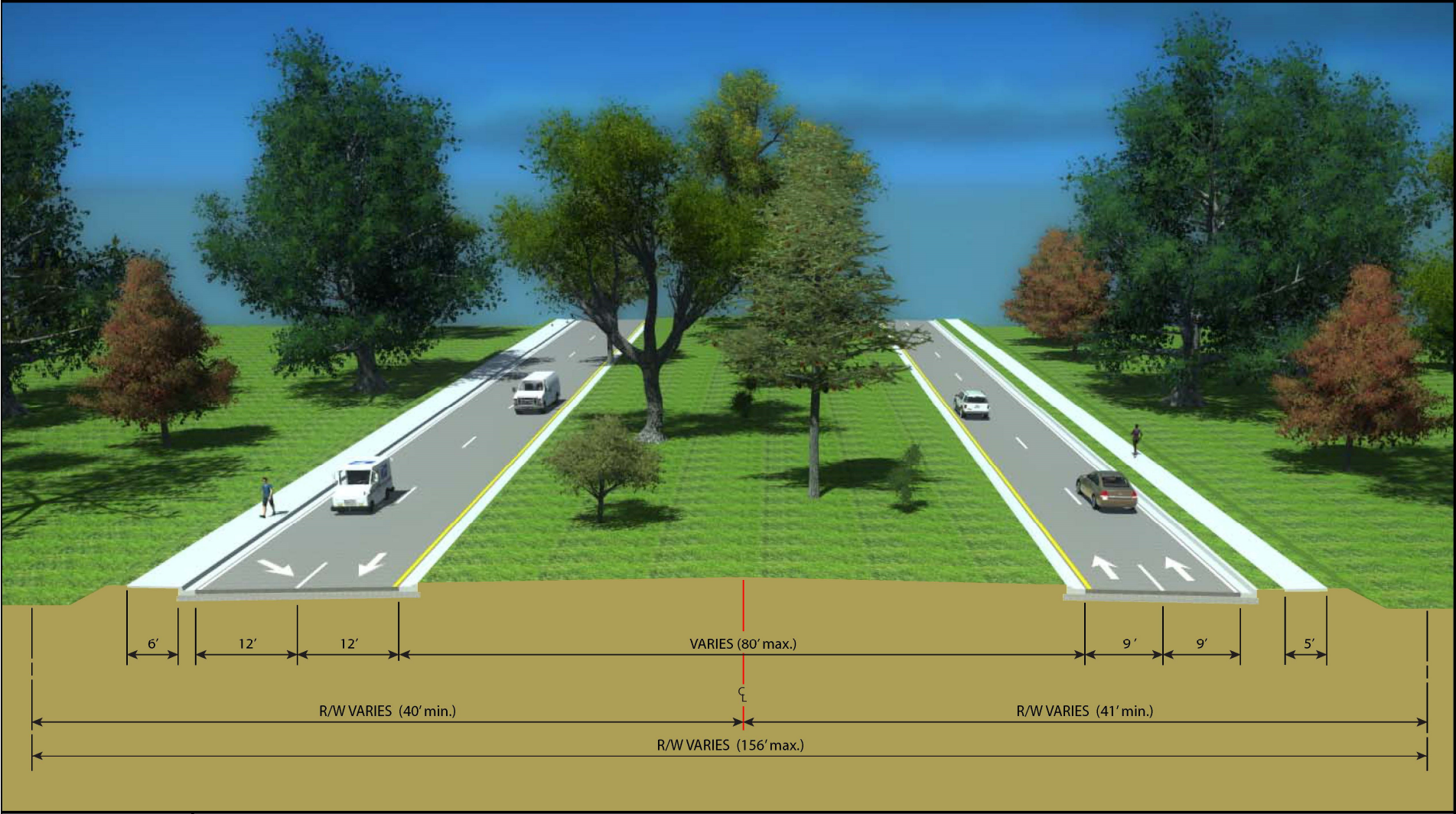
* Level of Service



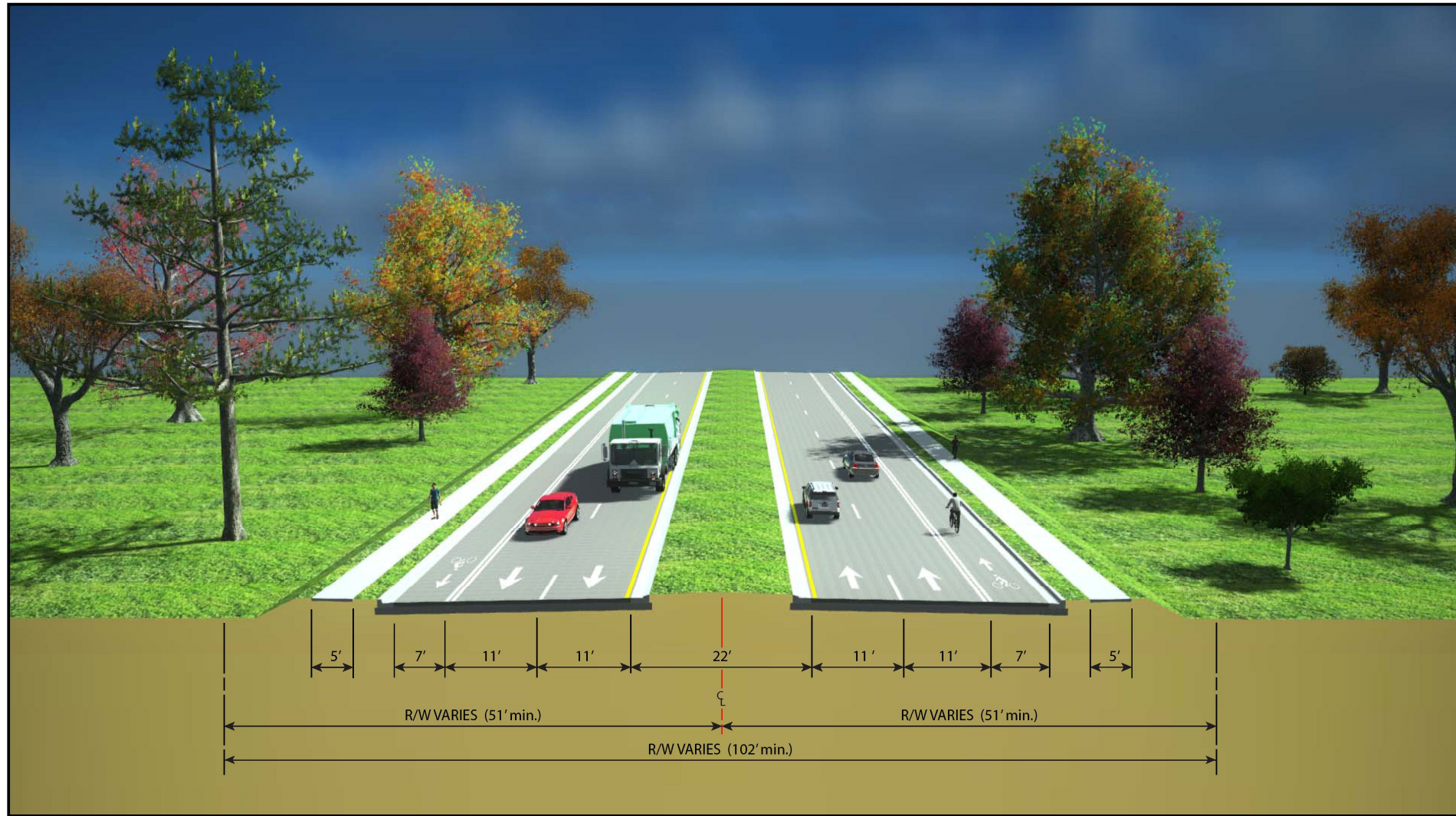
Existing Typical Section – Olson Rd north of Centerville



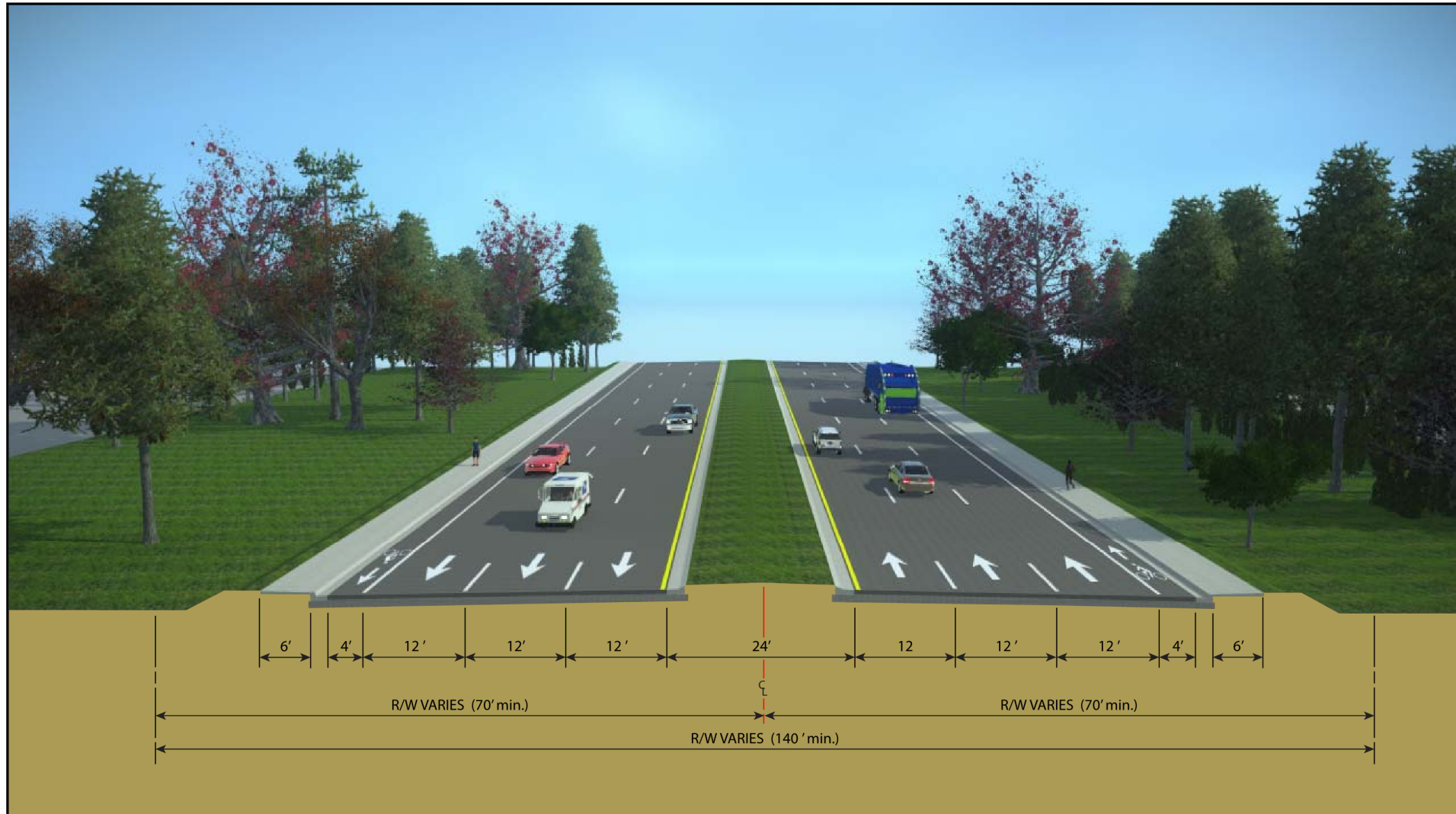
Existing Typical Section – Killarney Way west of Shamrock



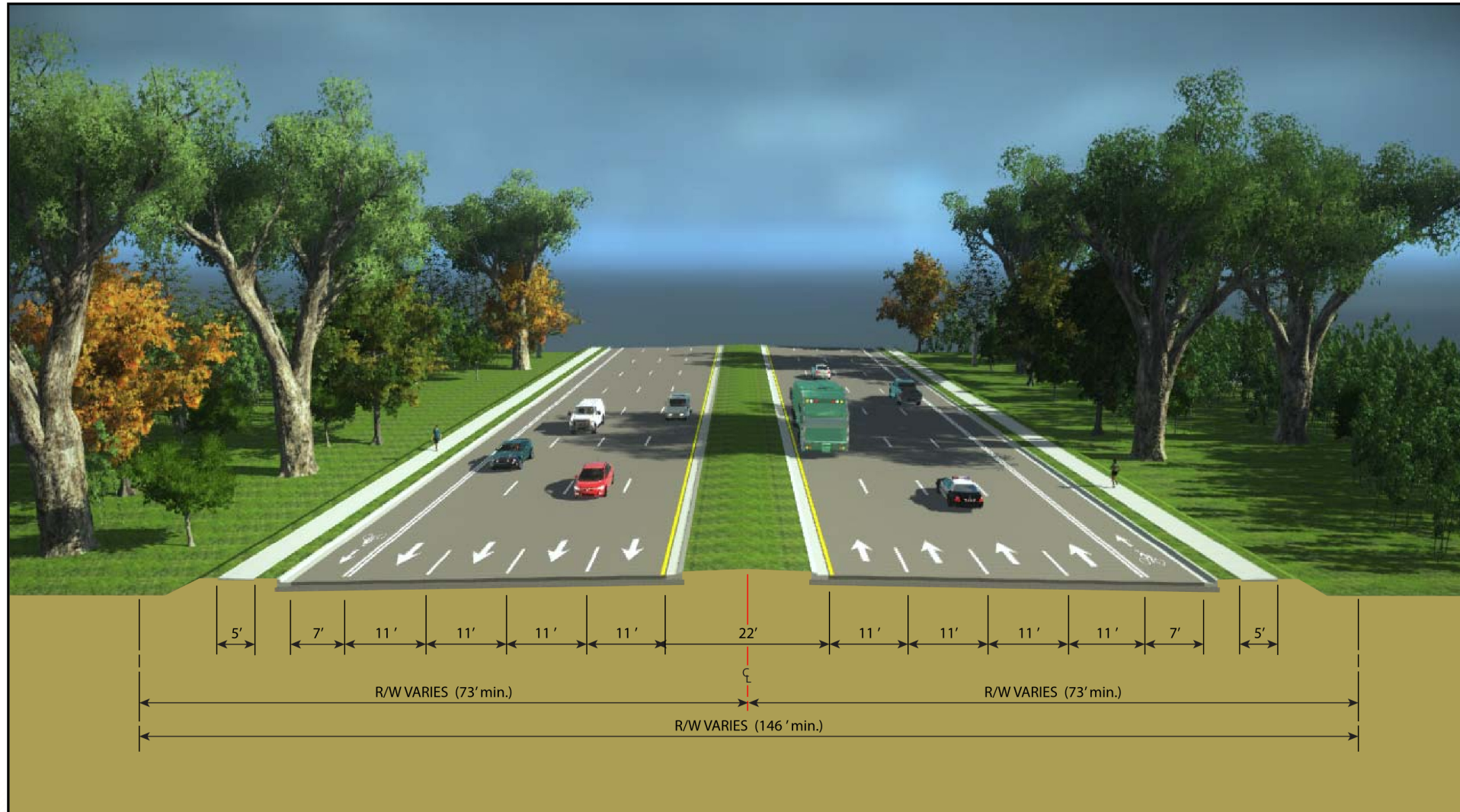
Typical Section – Proposed 4-Lane Divided



Typical Section Thomasville Rd.– Existing 6-Lane Divided

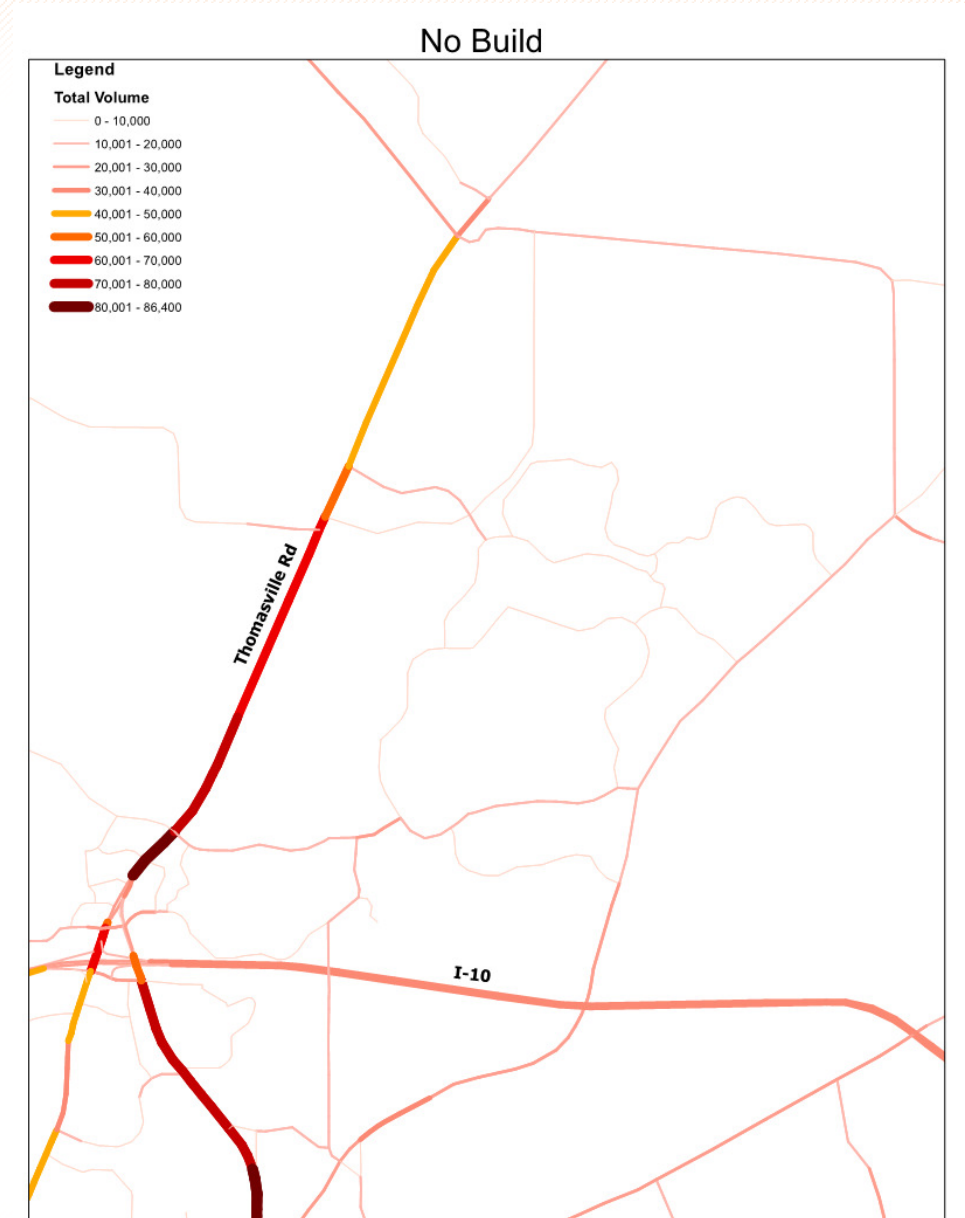


Typical Section – Proposed 8-Lane Divided

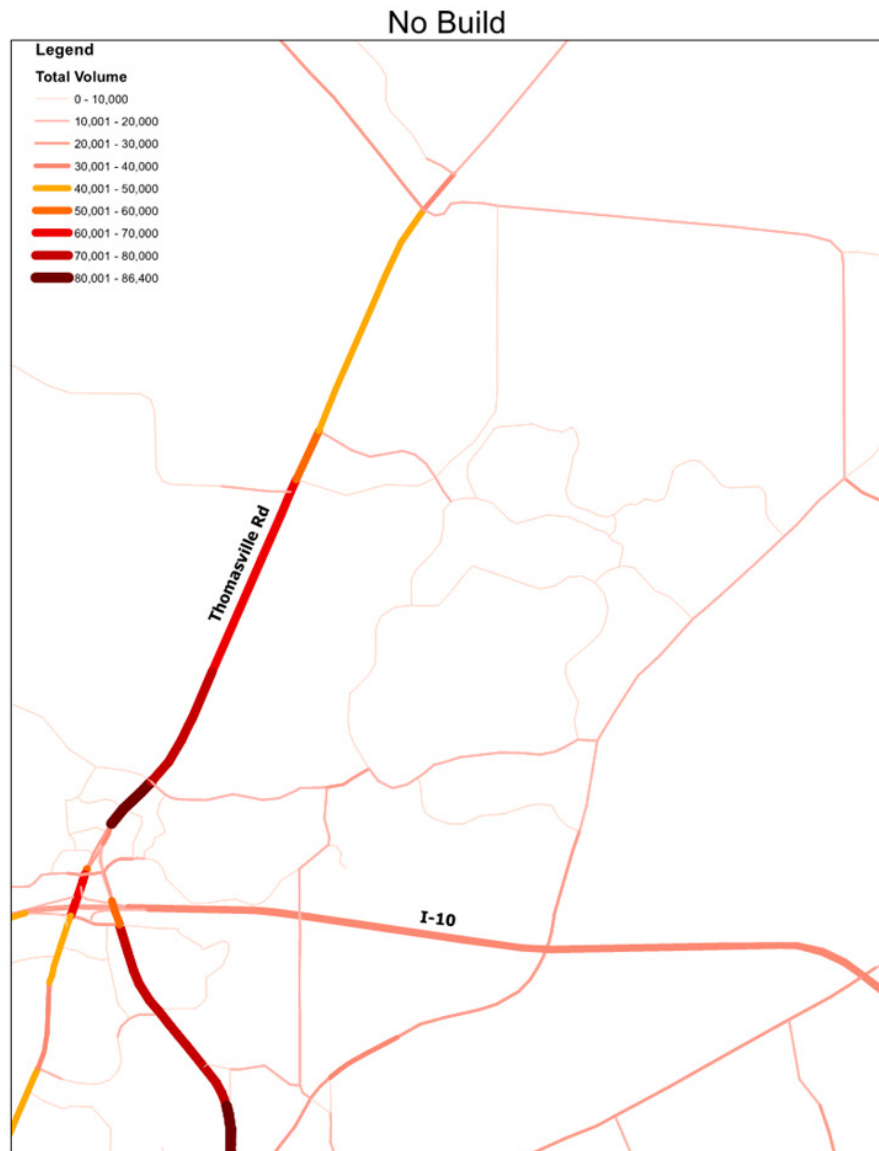


2040 Build Alternatives

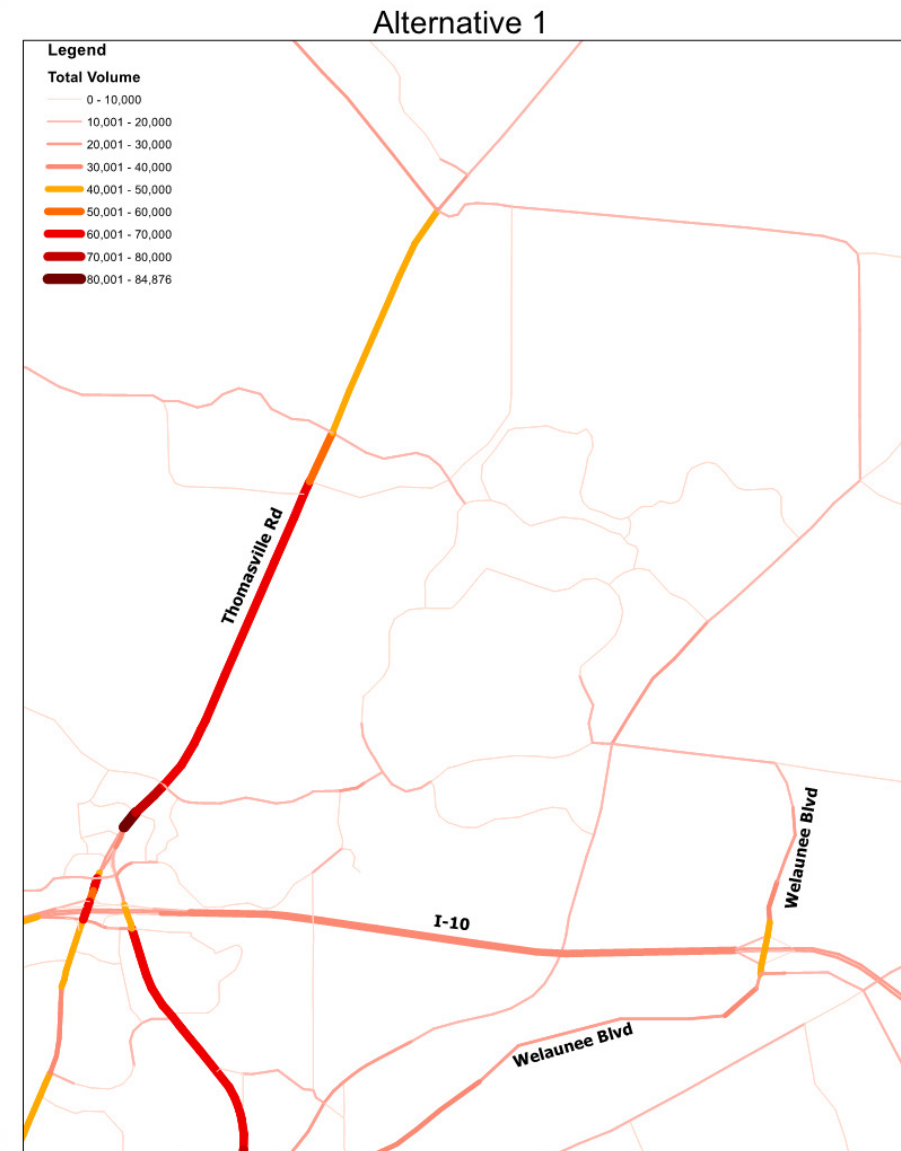
- Build Alternative 1: **Approved 2040 development and network**
 - 2040 Welaunee with Shamrock Extension
- Build Alternative 2: **Alternative 1 plus Thomasville Rd. 'max' improvement**
 - Thomasville increased to 8-lane arterial 45mph
- Build Alternative 3: **Alternative 1 plus Welaunee Blvd. 'max' improvement**
 - Welaunee Blvd. increased to no more than 6-lane arterial
- Build Alternative 4: **Limited Welaunee Blvd. improvements, Thomasville Rd. improvements**
 - Welaunee Blvd. improved only to Thornton, improve Thomasville Rd. as needed



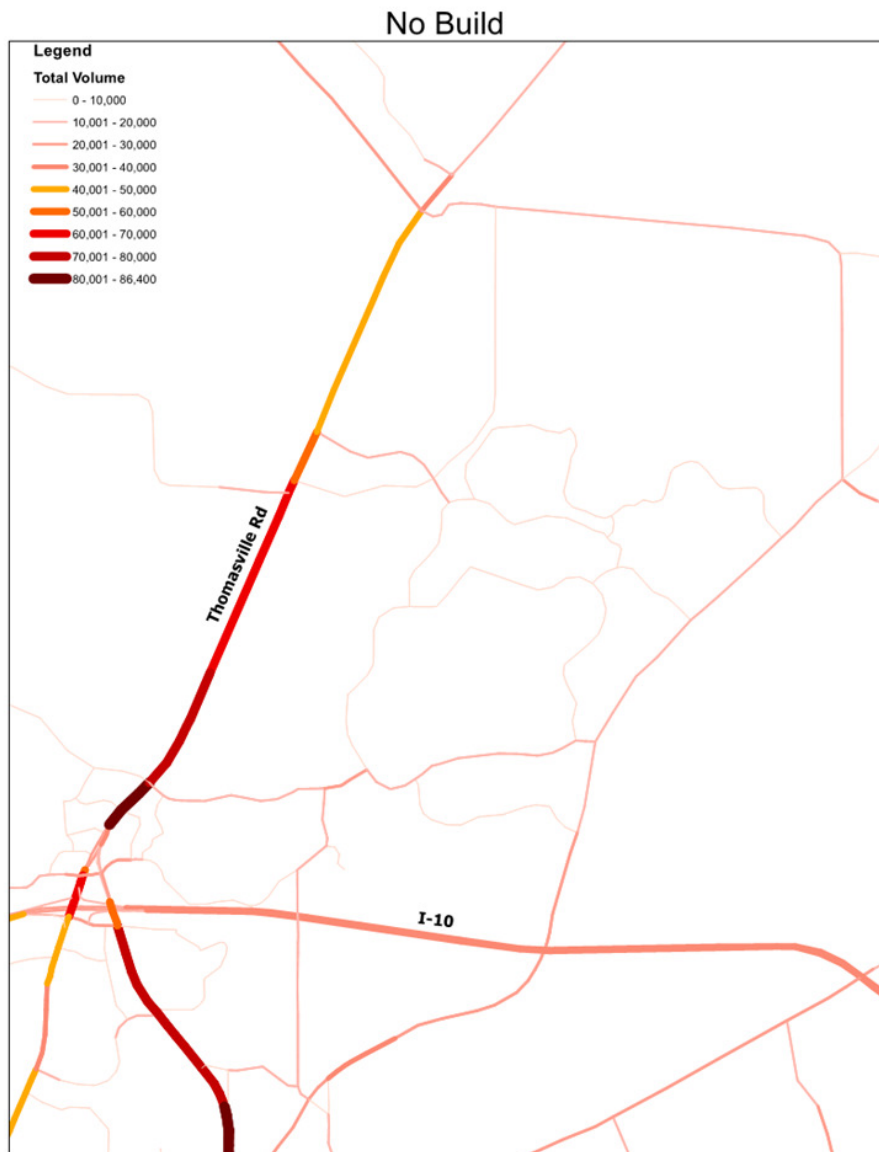
- Build Alternative 1: Approved 2040 development and network



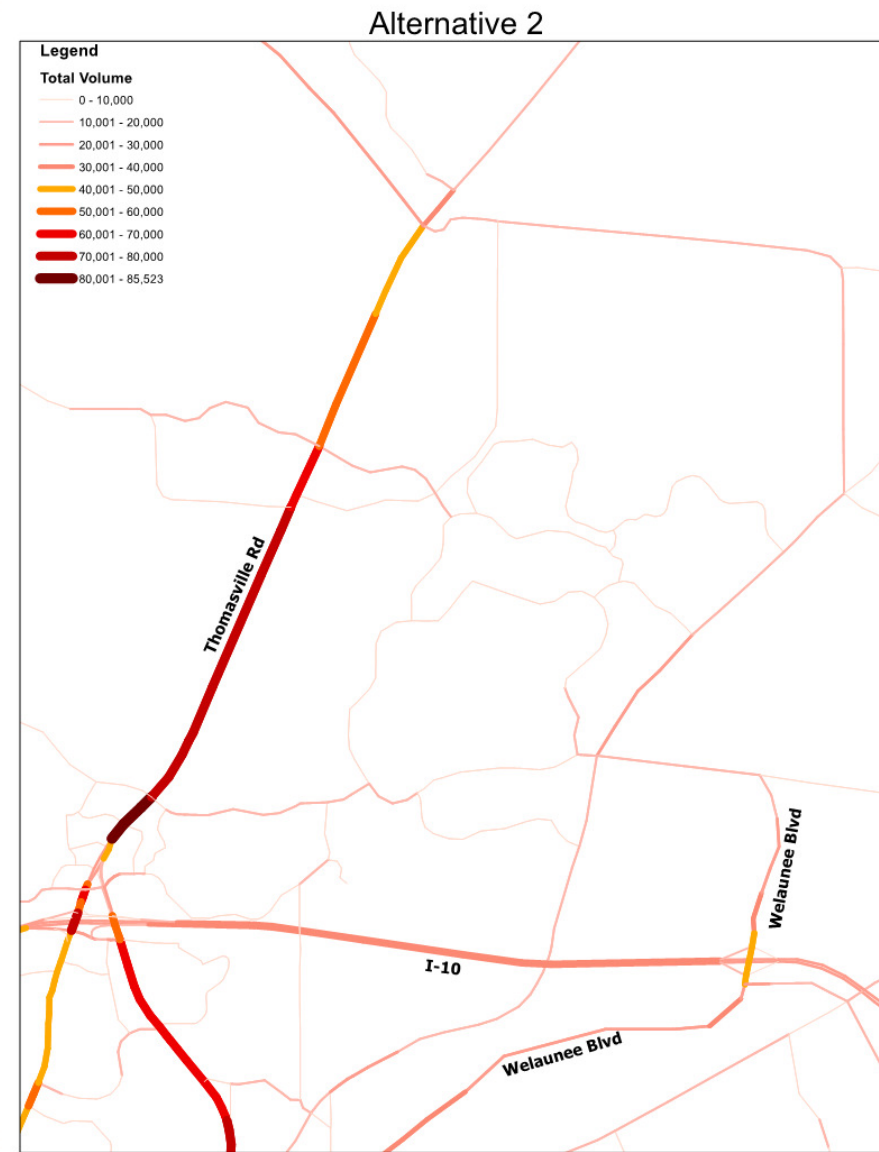
VS.



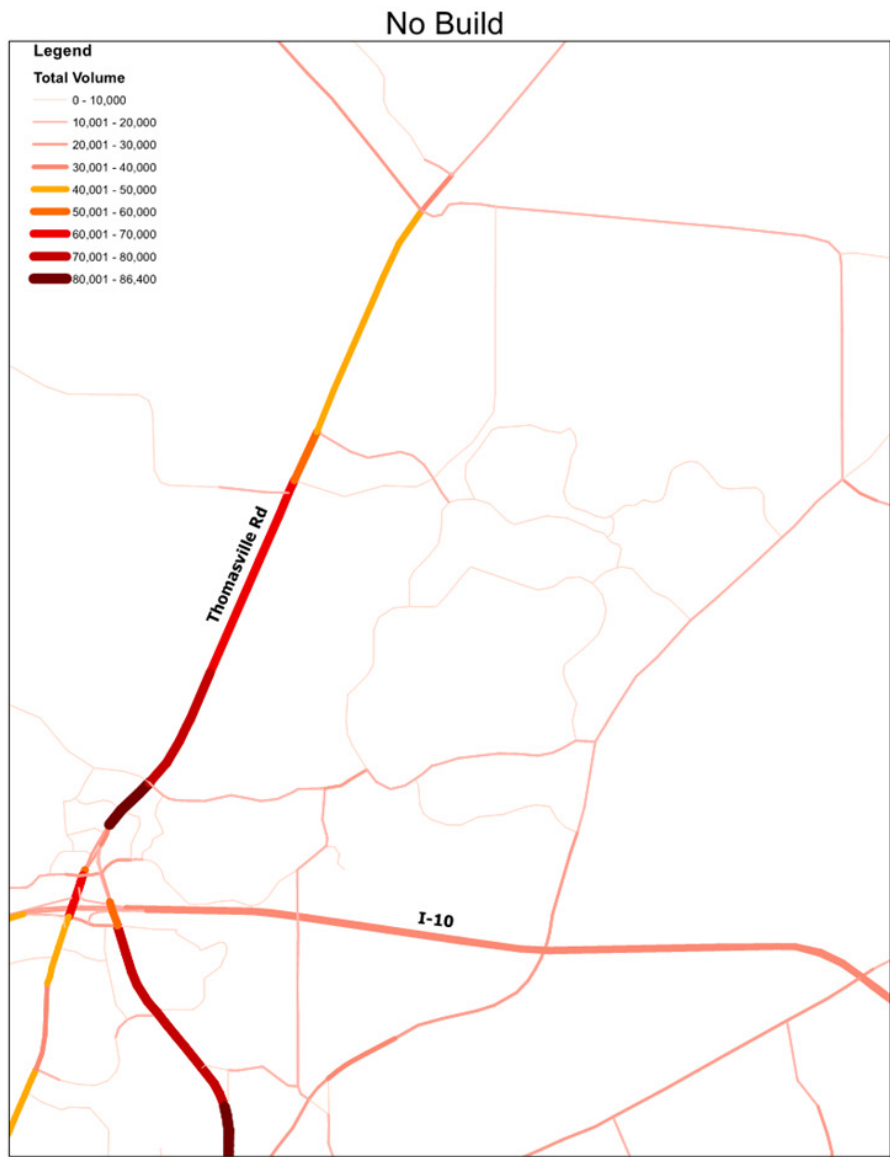
• Build Alternative 2: Alternative 1 plus Thomasville Rd. 'max' improvement



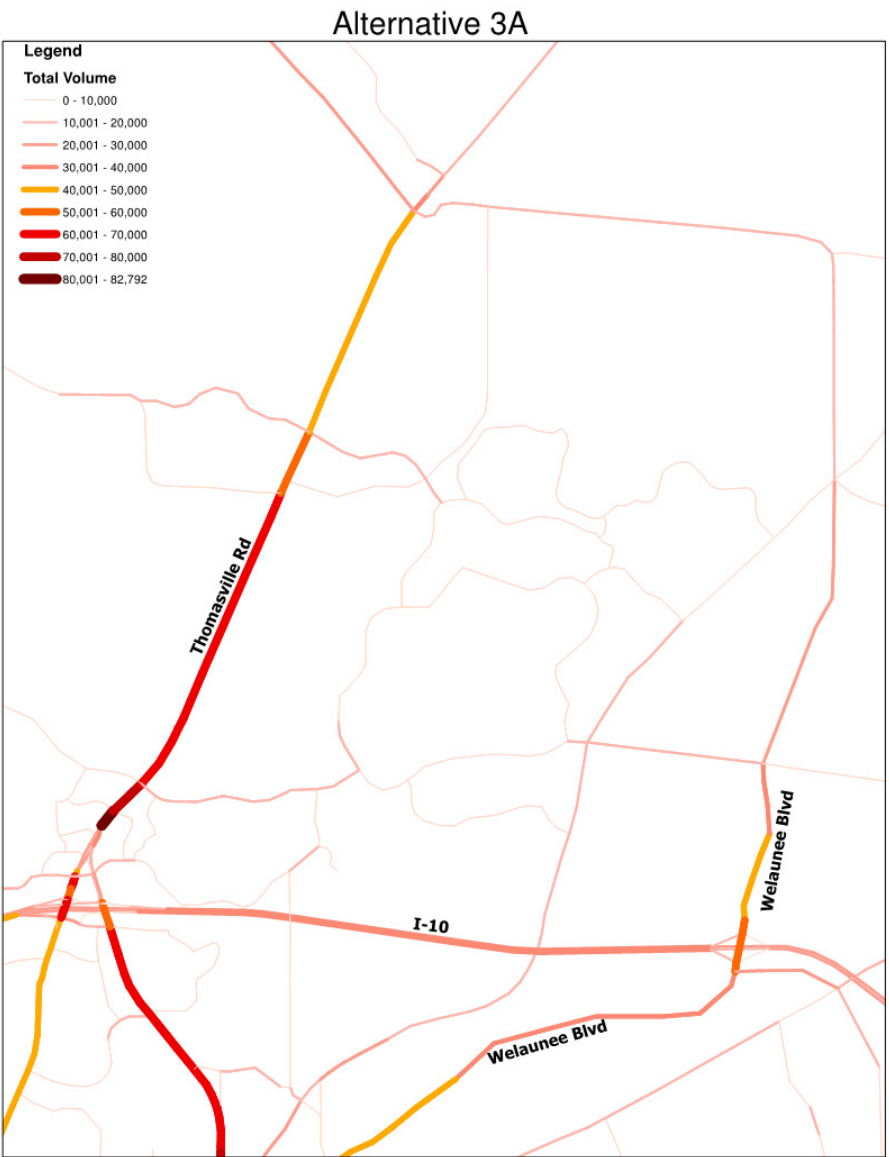
VS.



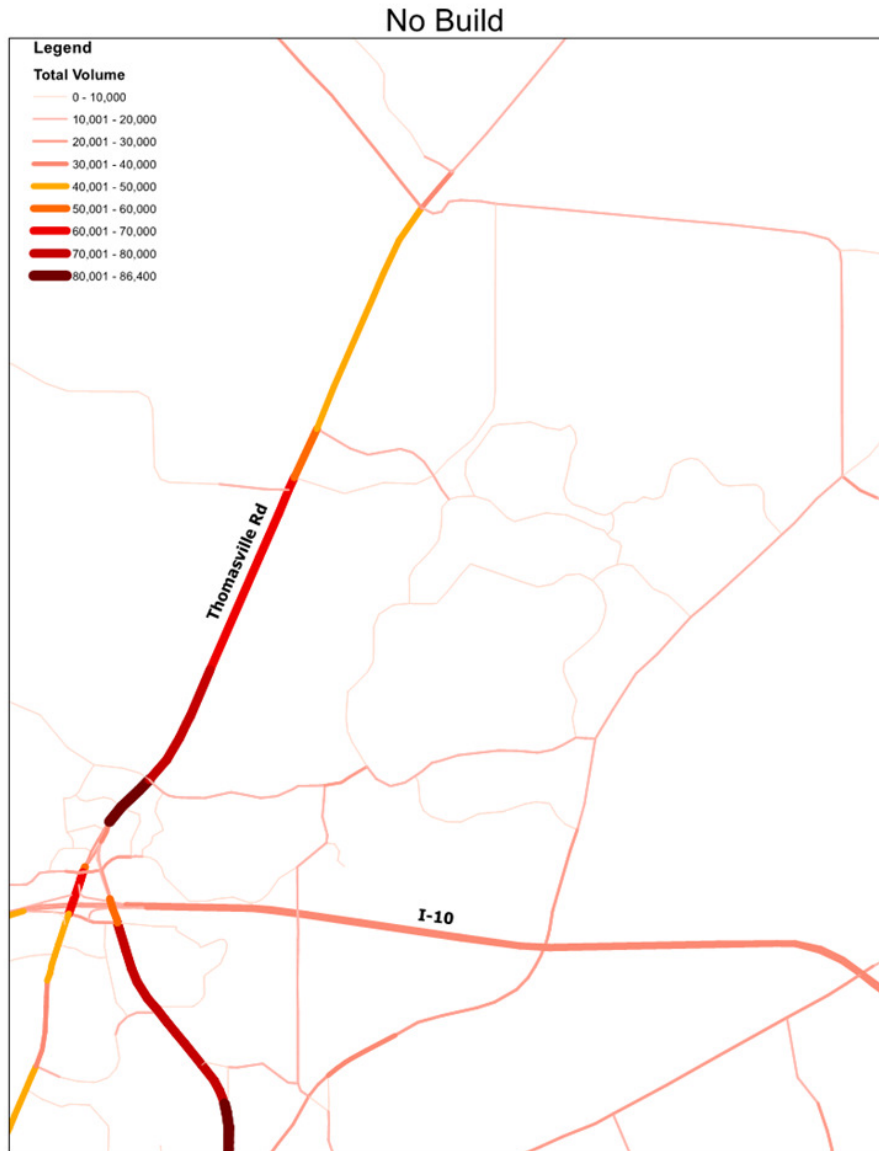
- Build Alternative 3: Alternative 1 plus Welaunee Blvd. 'max' improvement



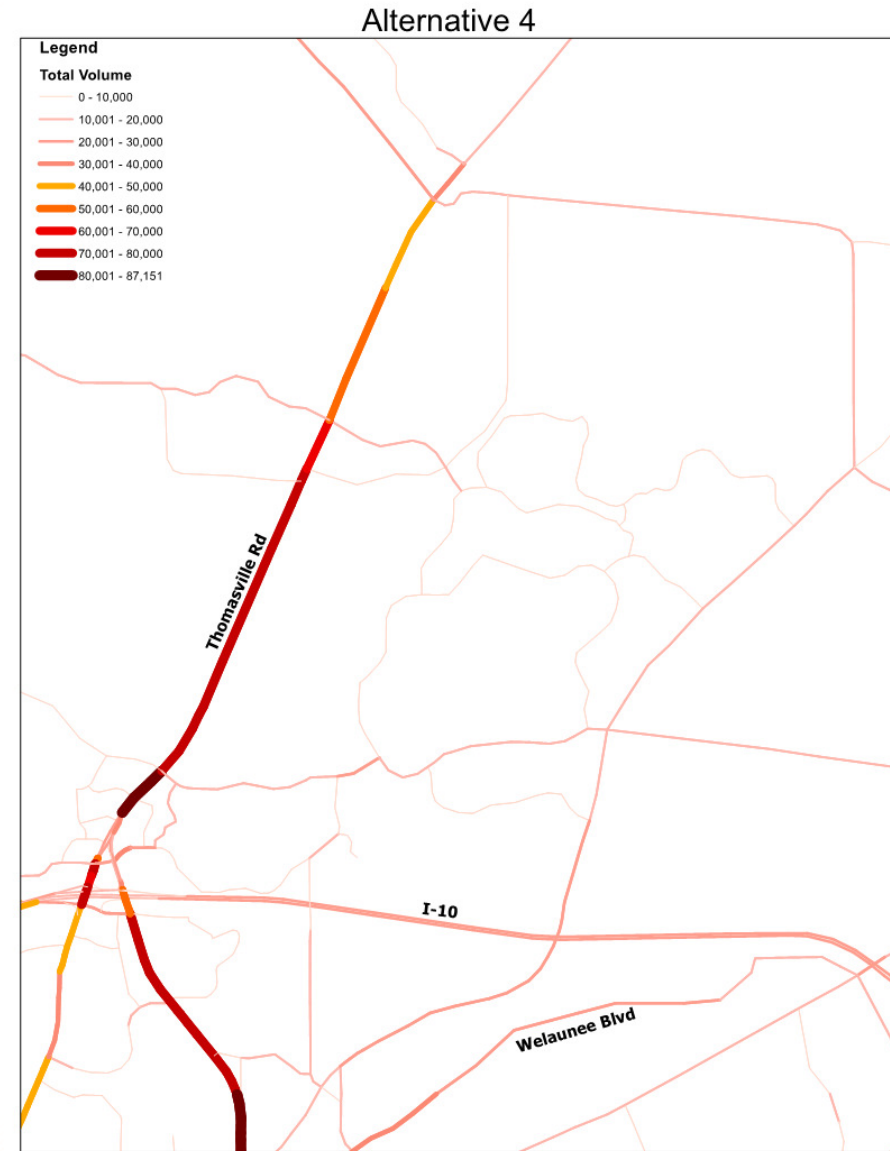
VS.



• Build Alternative 4: Limited Welaunee Blvd. improvements, Thomasville Rd. improvements

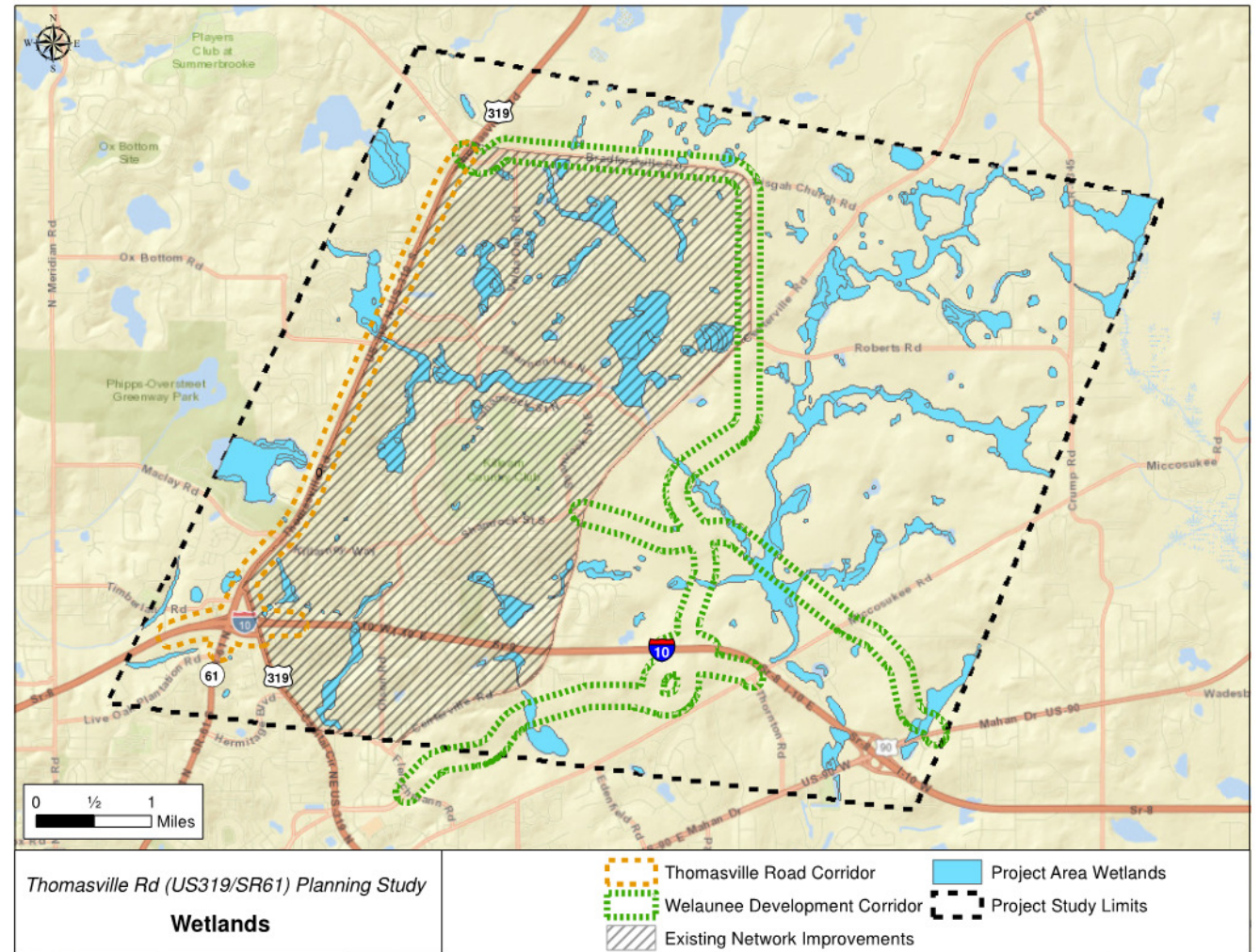


VS.



Environmental

- Ongoing geotechnical and contamination reviews
- Draft Cultural Resources review
- Efficient Transportation Decision Making (ETDM) Area of Interest Tool
- Listed species and wetland evaluation



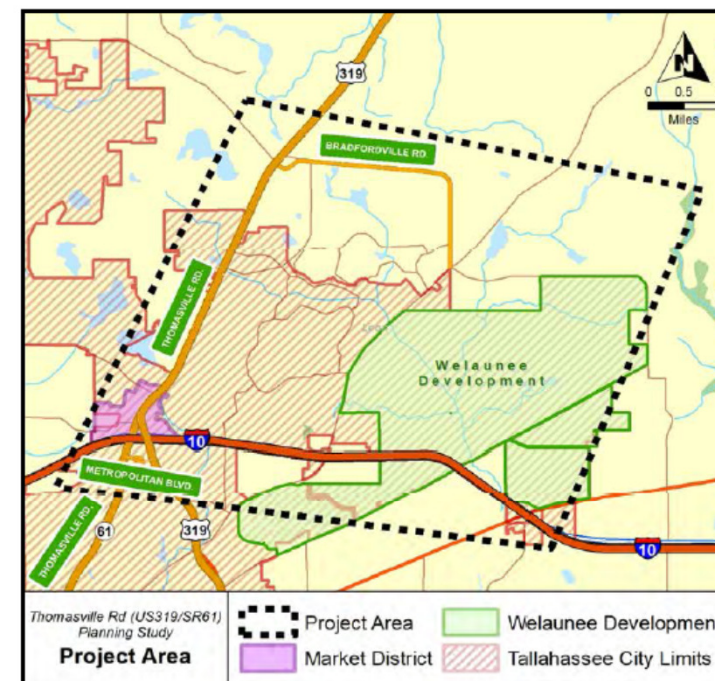
Corridor Environmental Report Status

	Report Name	
	Contamination Screening Evaluation	Cultural Resources
Thomasville Road	In Progress	Draft Complete
Welaunee	Under Development	Draft Complete
Existing Network	Under Development	Draft Complete



Public Involvement

- HOA Outreach
 - Planning to meet with both the Killlearn Estates and Killlearn Lakes HOAs in May 2016.
- Website
 - <http://www.nwflroads.com/22259352201/>
 - Comments and questions welcomed on the 'Contact Us' page
- Continued CRTPA updates



Thomasville Road Planning Study Overview

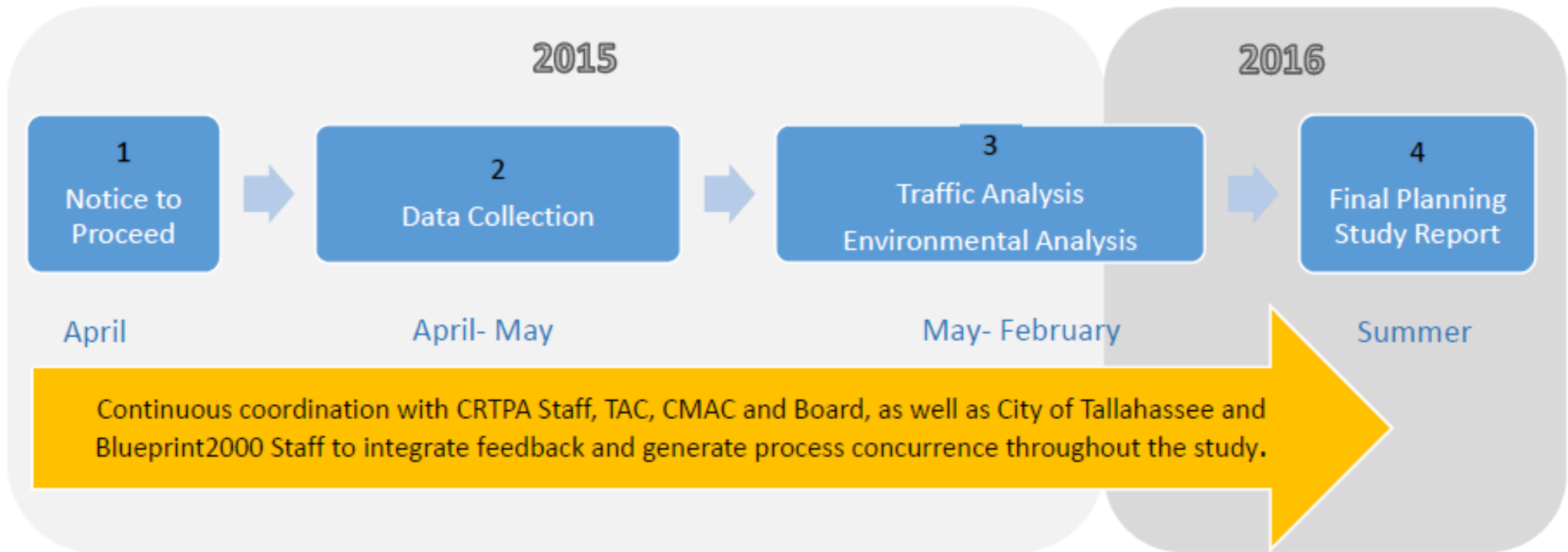
The purpose of the Thomasville Road Planning Study is to explore additional highway capacity alternatives to relieve current and anticipated congestion along the Thomasville Road/ Capital Circle Northeast (SR 61/US 319) corridor, including the interchanges with SR 8 (I-10). The project limits extend from Metropolitan Boulevard to the Bannerman Road/Bradfordville Road intersection. Alternatives being considered include adding travel lanes to SR

61 (US 319) in the northbound and southbound directions, improving the existing roadway network around Thomasville Road, and constructing a new roadway on a new alignment. Secondary purposes include expediting multi-modal travel along the corridor while allowing safe movement of vehicle, pedestrian and bicycle traffic.

The 14 month study will identify impacts to the built and natural environment based on alterna-

tives analyzed. Alternatives that meet the purpose and need of the study will be carried forward for a more in-depth analysis.

This project is being completed by the Florida Department of Transportation (FDOT) and is being coordinated with the Capital Region Transportation Planning Agency (CRTPA), Blueprint 2000, Tallahassee-Leon County Planning Department, other project stakeholders and FDOT projects in the area.



Thanks!



Kimberly Stephens, P.E.
Project Manager
HNTB
777 Main St., Building A
Chipley, FL 32428
850-415-9001
kistephens@HNTB.com