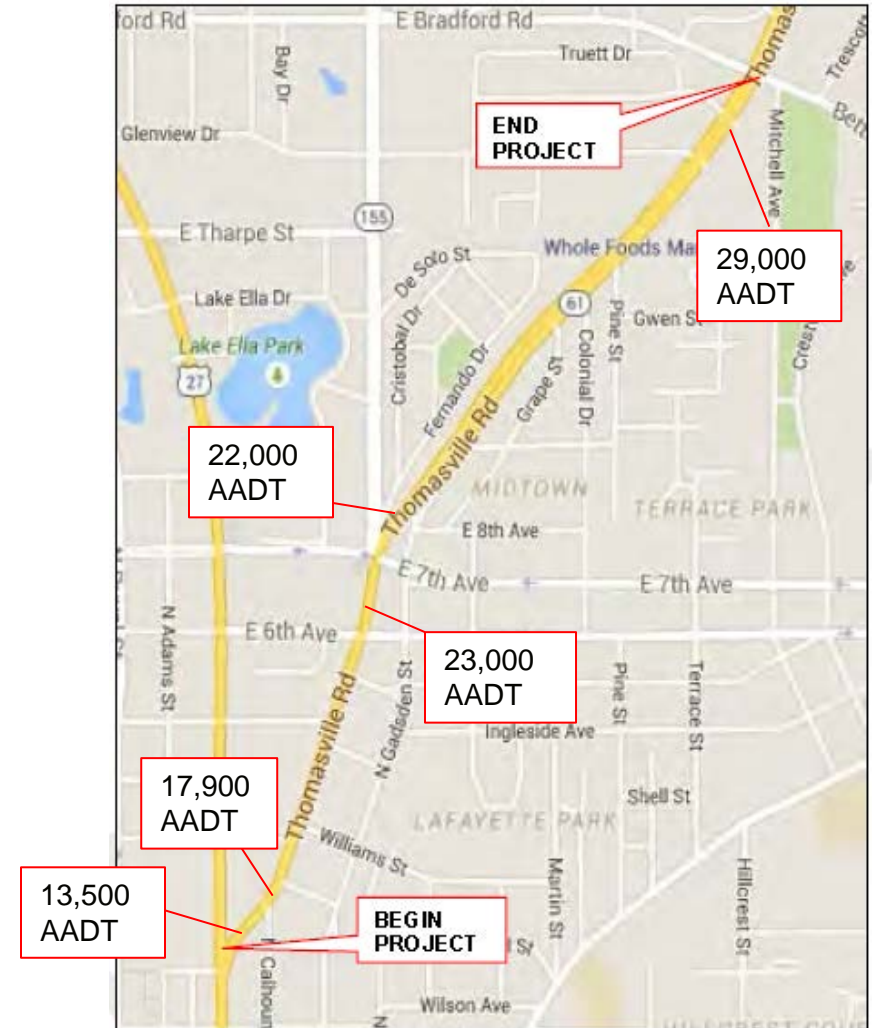


SR 61/Thomasville Road  
*US 27/Monroe Street to Betton Road/Bradford Road*  
Leon County

# SR 61/Thomasville Road Pedestrian and Arterial Study

- Scope of Work
  - Pedestrian/Bicycle Safety
    - Observations
    - Counts
    - Crash data/analysis
    - Lighting analysis
  - Thomasville Rd. and 7<sup>th</sup> Ave. Intersection Study
    - Observations
    - Traffic counts
    - Roundabout analysis
    - Crash data/analysis



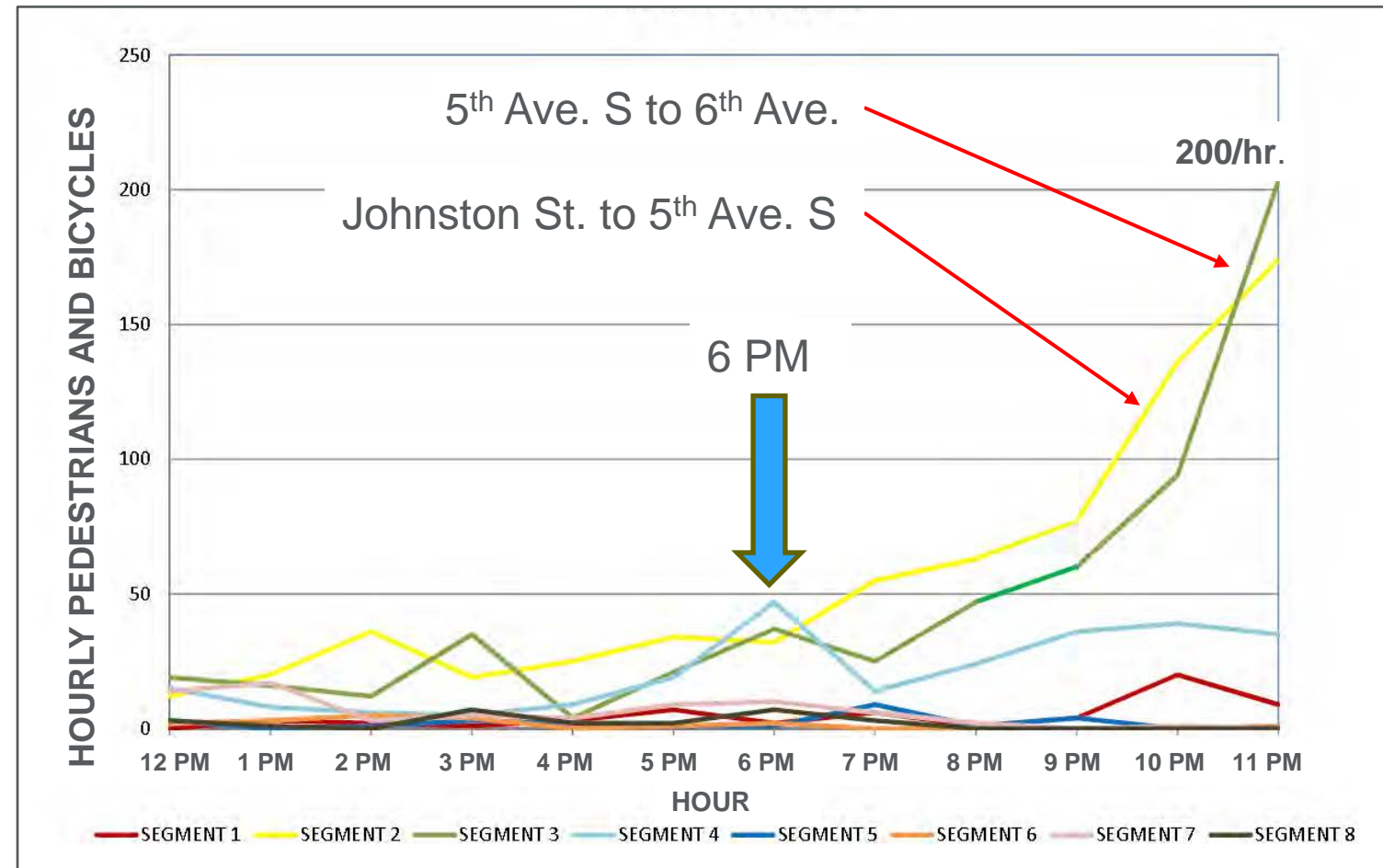
## SR 61/Thomasville Road Arterial Study – Pedestrian/Bicycle Counts

- 3 Days (Thursday - Saturday), Oct. 2015
- Noon to Midnight

Segment	Total Crossings (3 days)	Daily Average	Percent of Corridor
Segment 1: Monroe St to Johnston St	112	37	3%
Segment 2: Johnston St to 5 <sup>th</sup> Ave S	1249	416	40%
Segment 3: 5 <sup>th</sup> Ave S to 6 <sup>th</sup> Ave	999	333	32%
Segment 4: 6 <sup>th</sup> Ave to 7 <sup>th</sup> Ave	399	133	13%
Segment 5: 7 <sup>th</sup> Ave to Crosswalk at Gadsden St	125	42	4%
Segment 6: Colonial Dr. to Shopping Ctr. Signal	53	18	1%
Segment 7: Shopping Ctr. Signal to Glenview Dr.	160	53	5%
Segment 8: Glenview Dr. to Betton/Bradford Rd.	58	19	2%

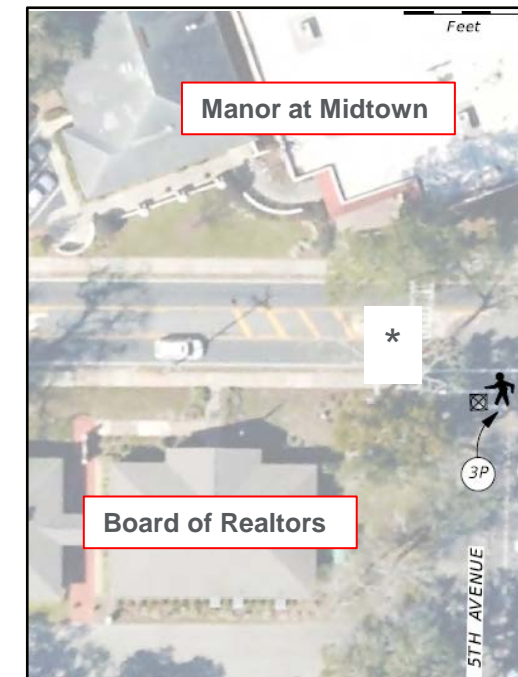
# SR 61/Thomasville Road Arterial Study – Pedestrian/Bicycle Counts

- Hourly Trends
- Crossing Thomasville Rd.



# SR 61/Thomasville Road Pedestrian Study – Pedestrian/Bicycle Crashes (2009-2014)

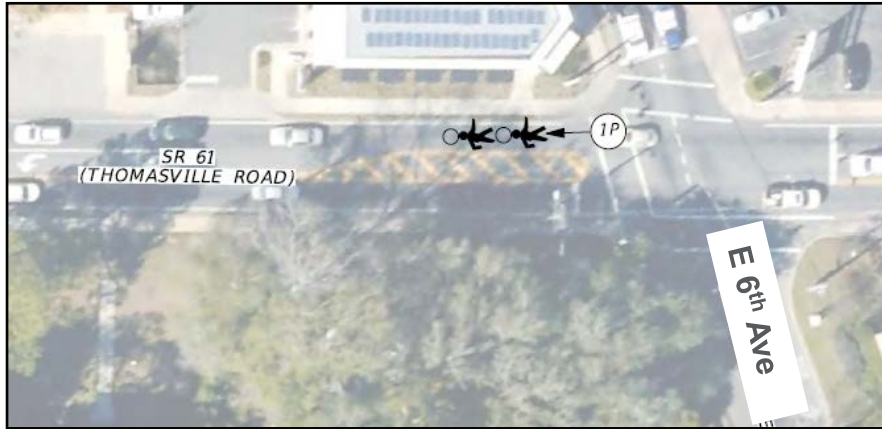
- 8 crashes: 3 pedestrian, 5 bicycle
  - 5 injuries, 1 fatality \*
  - 6 drivers at-fault
  - 3 night-time crashes
  - 5 crashes with turning vehicles
- 2 crashes at a signal
- 1 mid-block crash
- Ages 12 - 69



\* - pre-existing health issues



# SR 61/Thomasville Road Pedestrian Study – Pedestrian/Bicycle Crashes



# SR 61/Thomasville Road Pedestrian Study – Ped/Bike Recommendations

- Monroe St. – pedestrian improvements - \$203,000
- Upgrade lighting - Monroe St. to Gadsden St.
  - Decorative poles - \$1.5 M (1.1 B/C)
  - Standard poles - \$680,000 (4.2 B/C)
- Install bike shared-lane markings/signs
- Add pedestrian refuge islands
- Install RRFB near Beard St.
- Upgrade existing RRFB

\$170,000



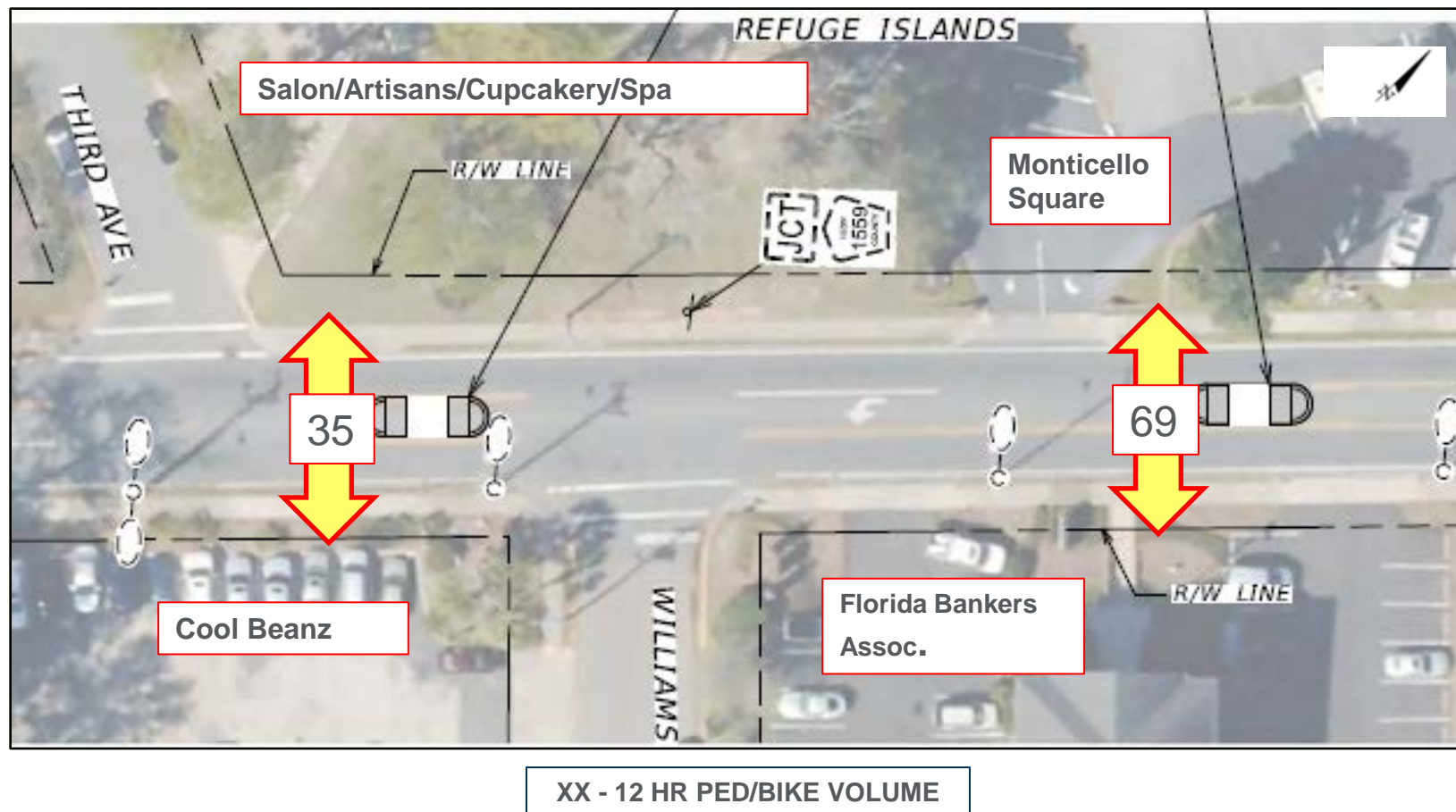






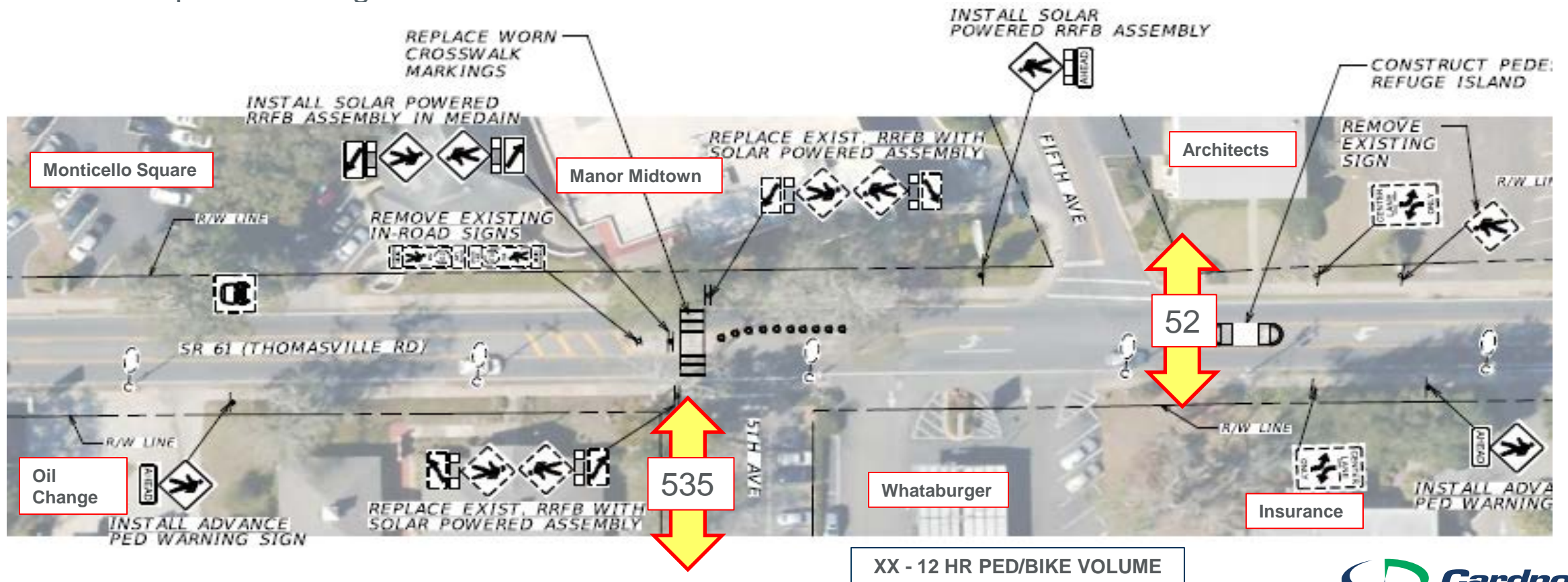
# SR 61/Thomasville Road Pedestrian Study – Ped/Bike Recommendations

- Add pedestrian refuge islands



# SR 61/Thomasville Road Pedestrian Study – Ped/Bike Recommendations

- Upgrade RRFB at 5<sup>th</sup> Ave. S.
  - Add supplemental beacons - advance and in median
  - Replace existing RRFBs with solar



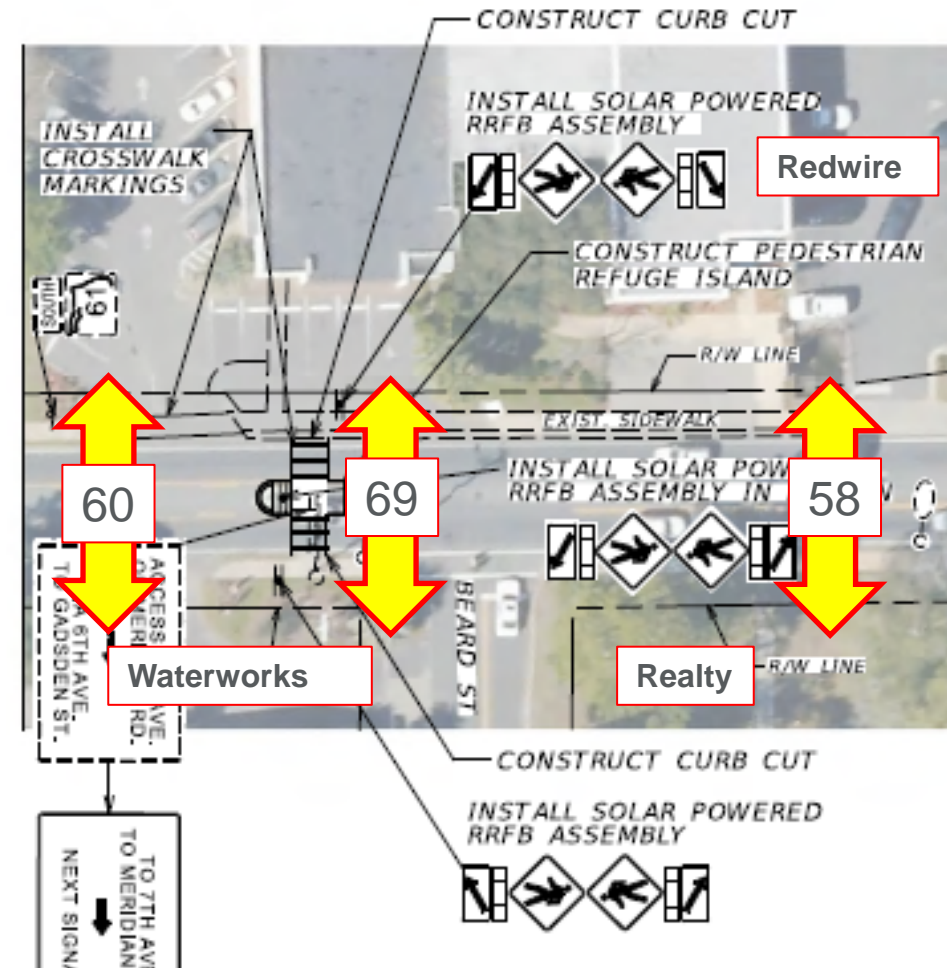


# SR 61/Thomasville Road Pedestrian Study – Ped/Bike Recommendations

- Add RRFB
  - High volume crossing area
  - Weekend peak starts at 6 PM

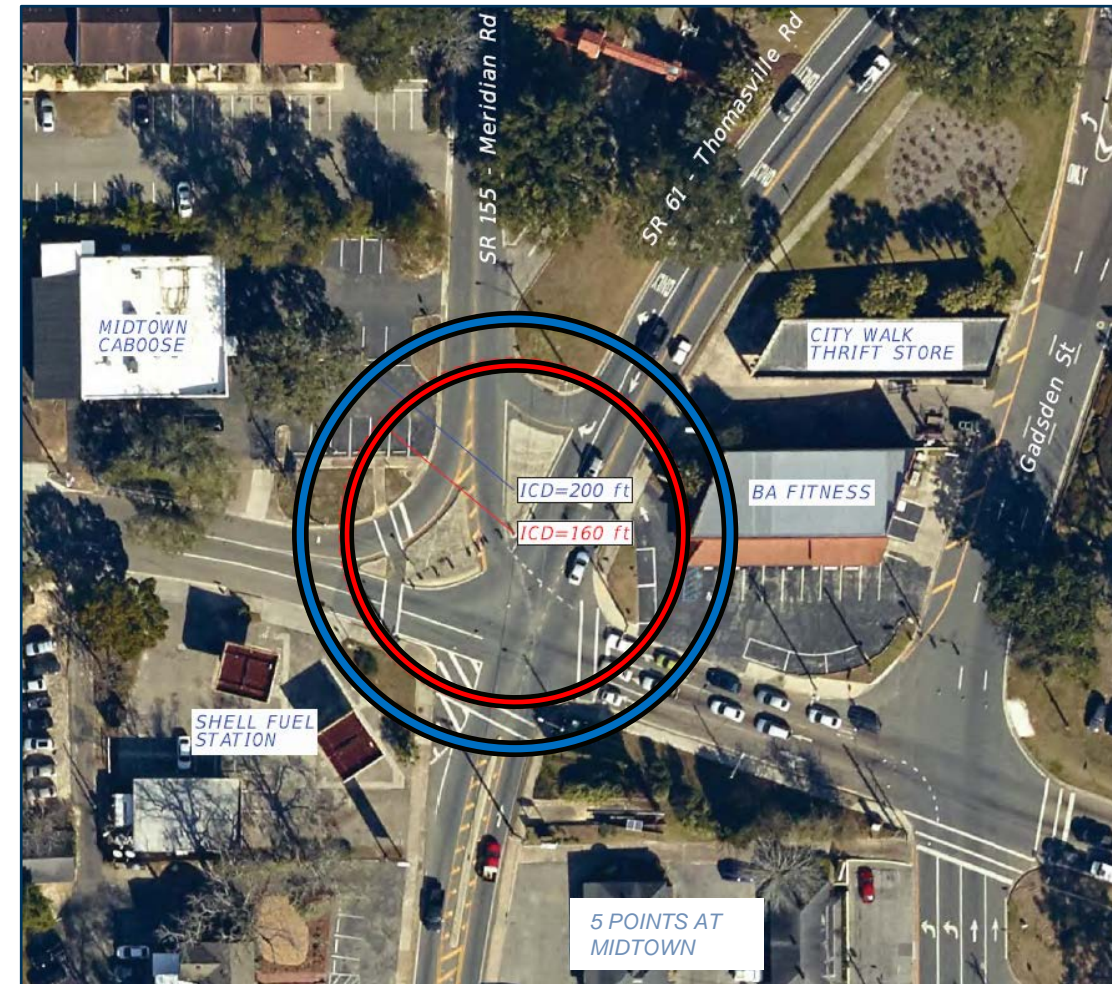
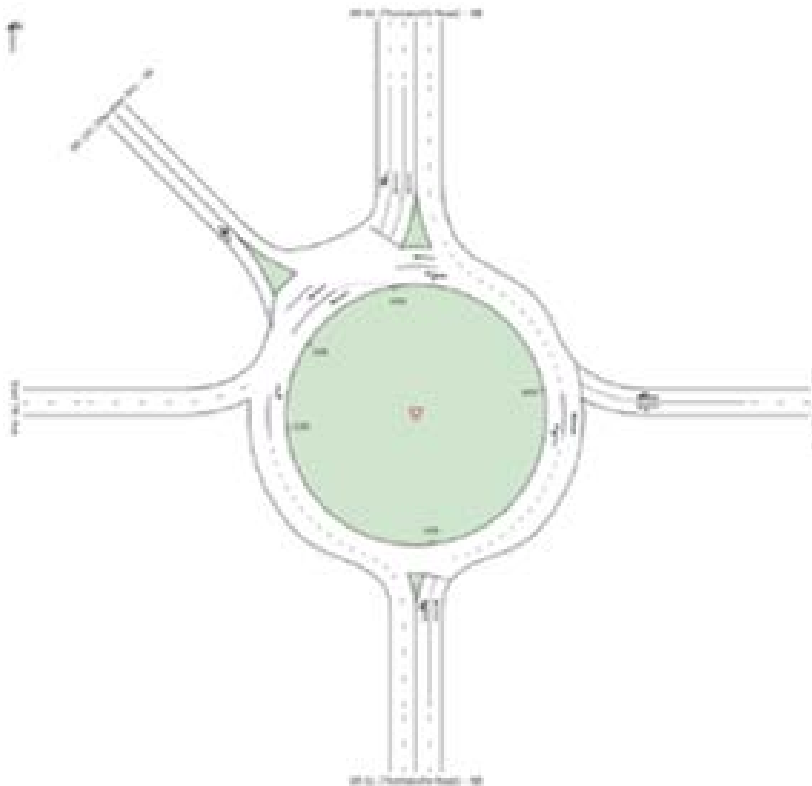


Looking North to Beard St



# SR 61/Thomasville Road Arterial Study – Roundabout Analysis

- Geometric Screening
  - Property impacts
  - Limited safety benefits
  - Level of Service F/E (2015)

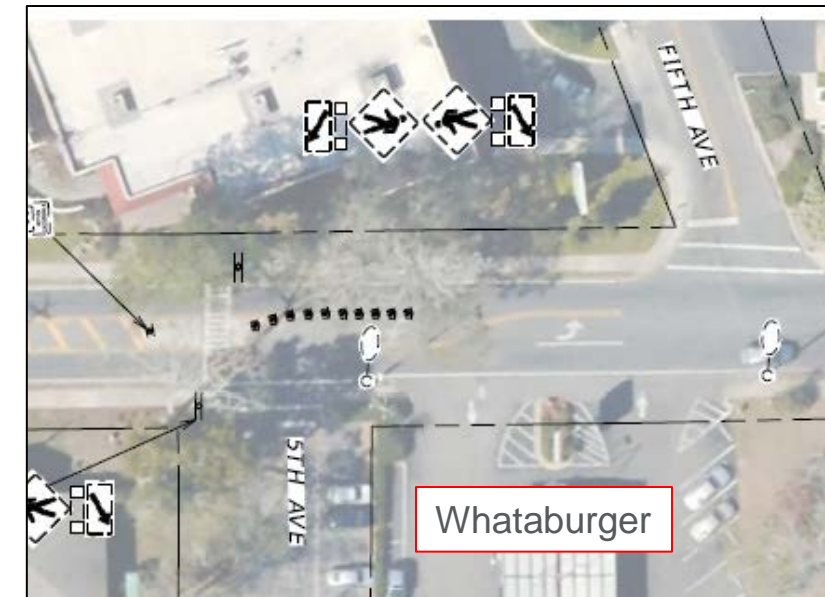
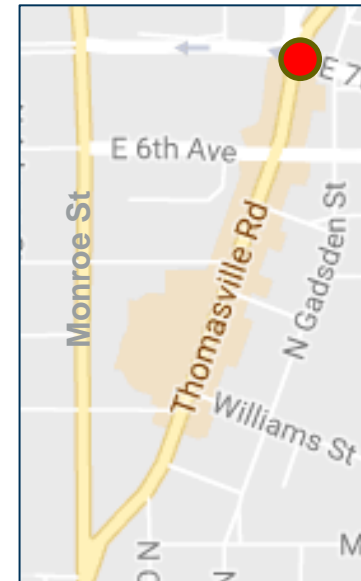




# SR 61/Thomasville Road Arterial Study – Corridor-wide Recommendations

## ➤ Additional Study Locations

- 7<sup>th</sup> Ave. Roundabout – expand study area
- 5<sup>th</sup> Ave./Whataburger – access study
- North end – crash patterns
  - Colonial Dr. – 9 left-turn crashes
  - Pine St. – 13 left-turn crashes
  - Glenview Dr. – 9 angle, 3 left-turn
  - Collins Dr. – 6 left-turn crashes



QUESTIONS ?