

SR 363/S. Adams Street
from Paul Russell Road to SR 373/Orange Avenue
Leon County

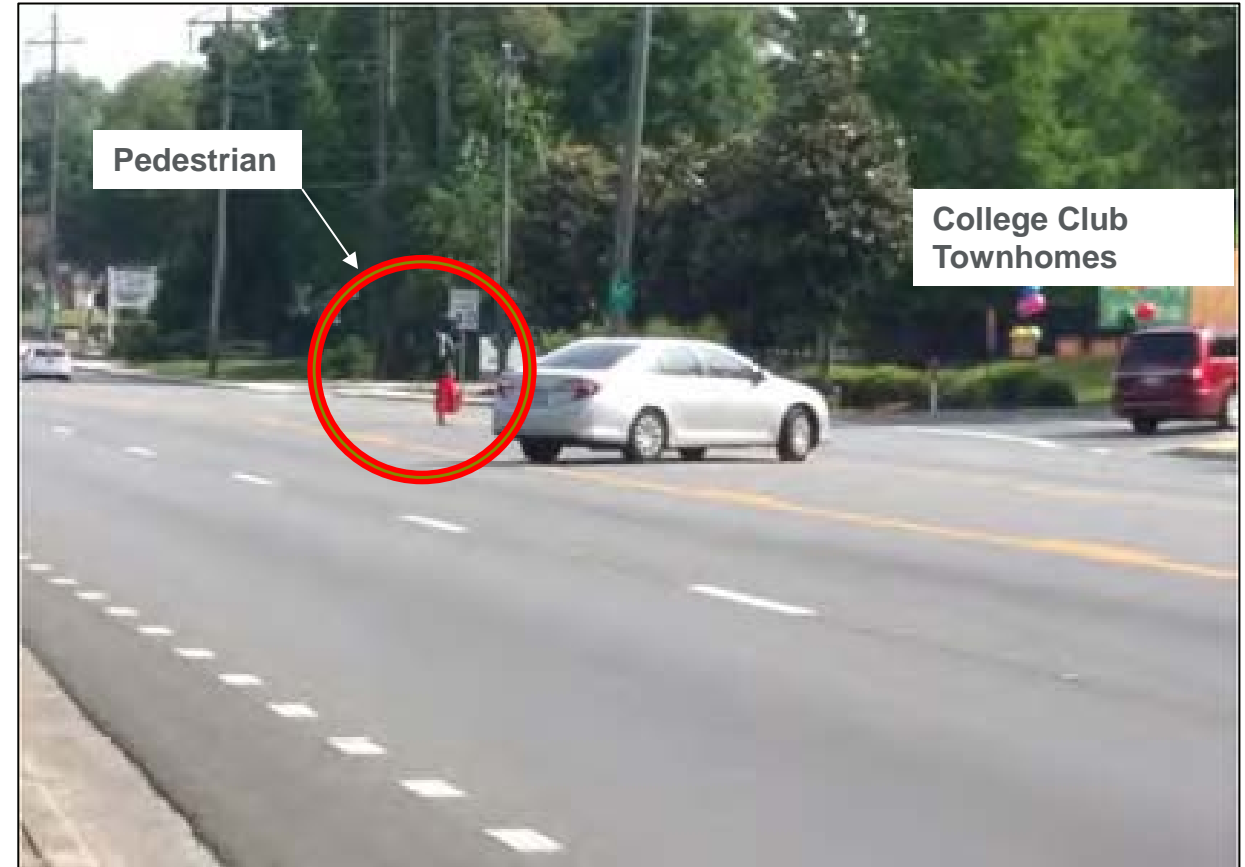
SR 363/S. Adams Street Pedestrian Safety Study

- Scope of Work
 - Pedestrian Safety
 - Observations
 - Pedestrian counts
 - Crash data/analysis
 - Alternatives analysis
 - Benefit-cost analysis
 - Recommendations

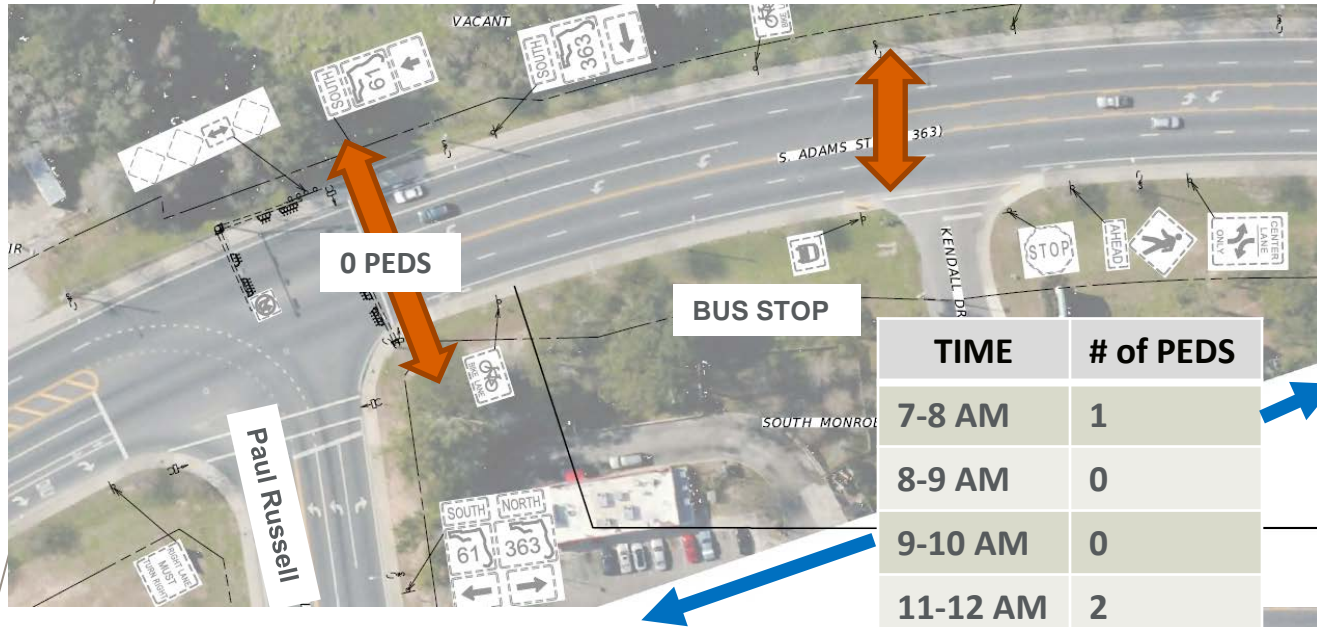


S. Adams St. Pedestrian Safety Study – Pedestrian Crashes

- 5 pedestrian crashes (2011-2015)
 - 5 female, 5 injuries
 - 1 night-time
 - Ages 19-50
 - 2 at driveways, 2 in center turn lane, 1 at signal
 - 3 near bus stop/College Club
 - 5 with turning vehicles
 - 4 drivers at-fault

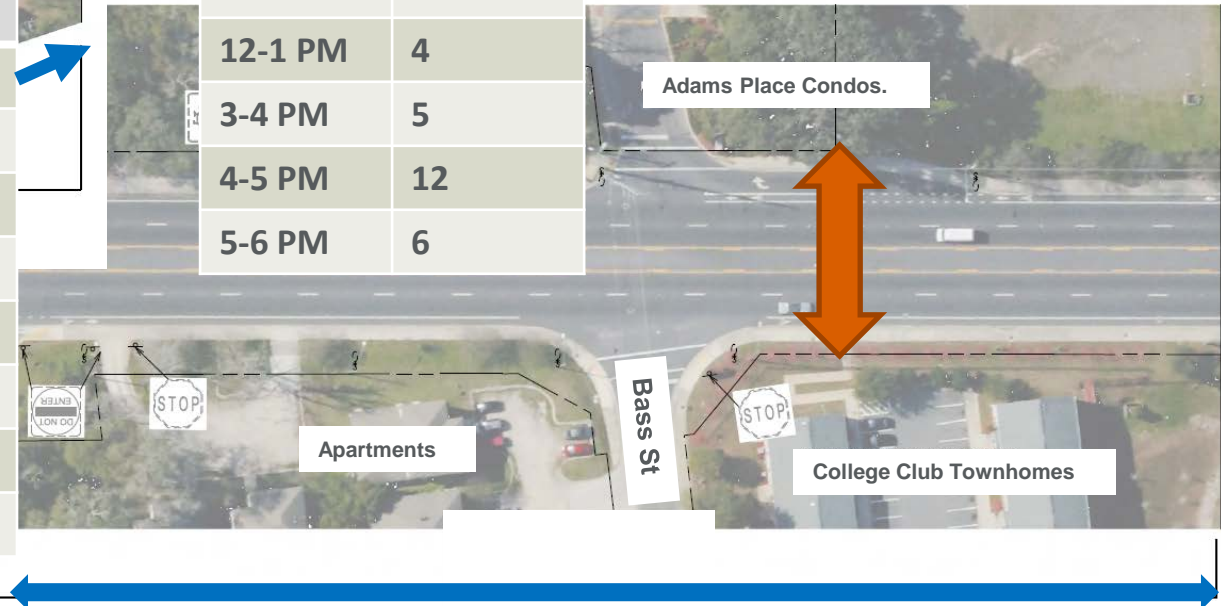


S. Adams St. Pedestrian Safety Study – Pedestrian Counts and Crashes



TIME	# of PEDS
7-8 AM	1
8-9 AM	0
9-10 AM	0
11-12 AM	2
12-1 PM	0
3-4 PM	0
4-5 PM	2
5-6 PM	1

TIME	# of PEDS
7-8 AM	1
8-9 AM	0
9-10 AM	1
11-12 AM	6
12-1 PM	4
3-4 PM	5
4-5 PM	12
5-6 PM	6

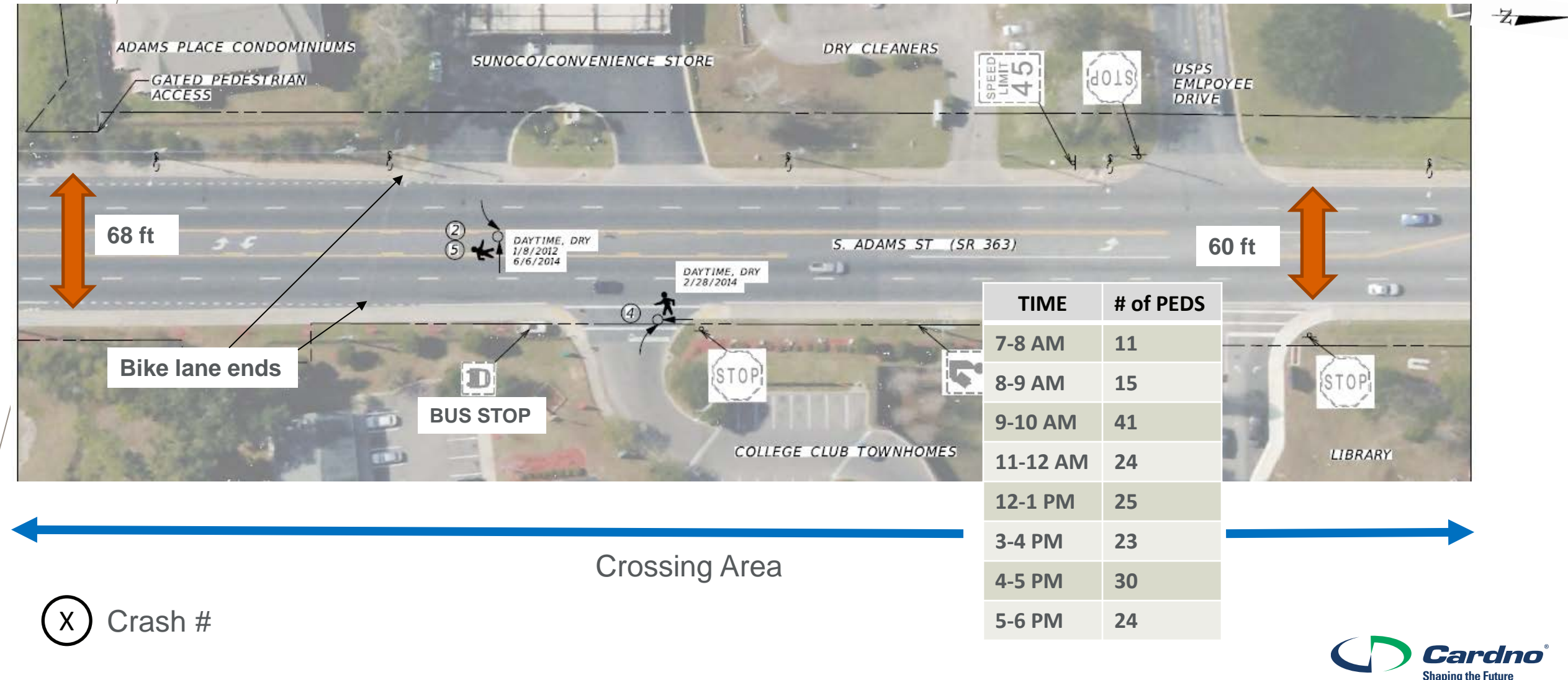


Crossing Area

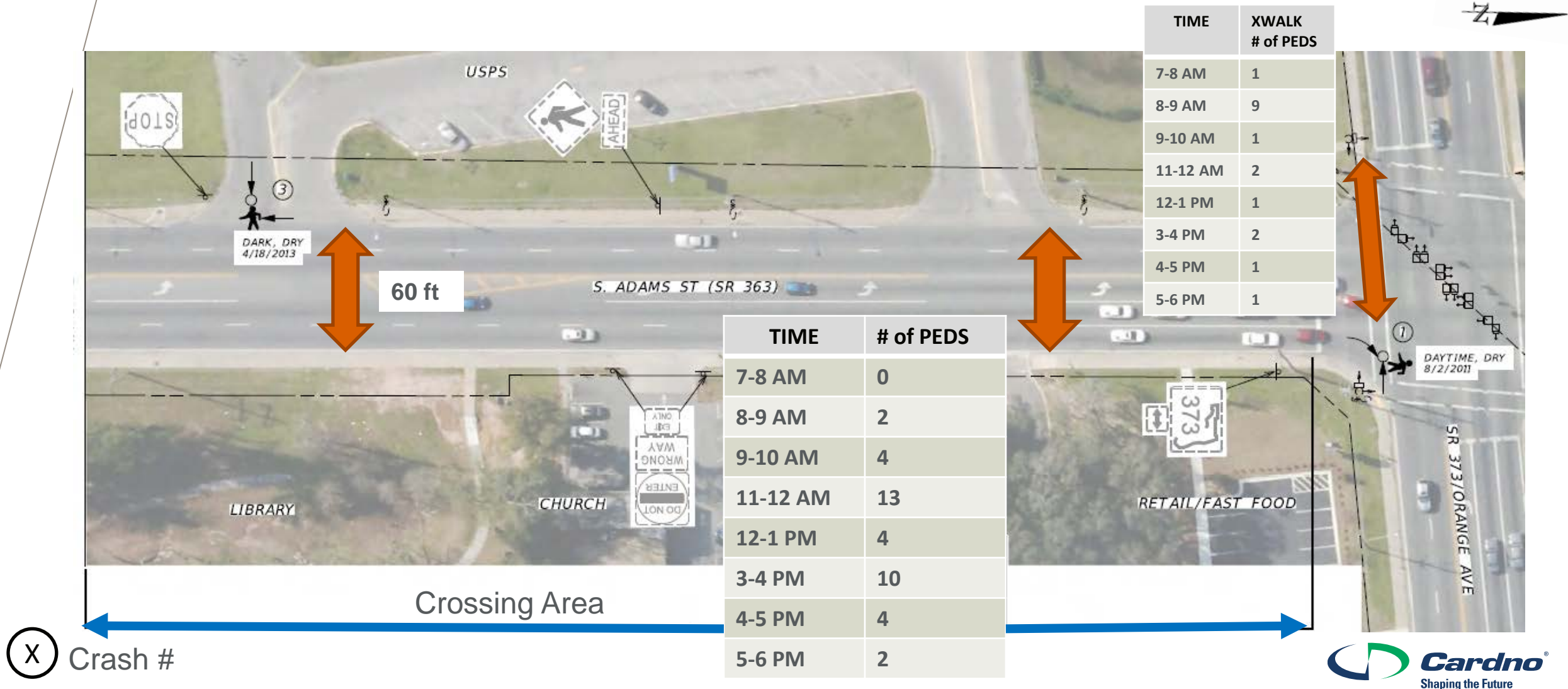


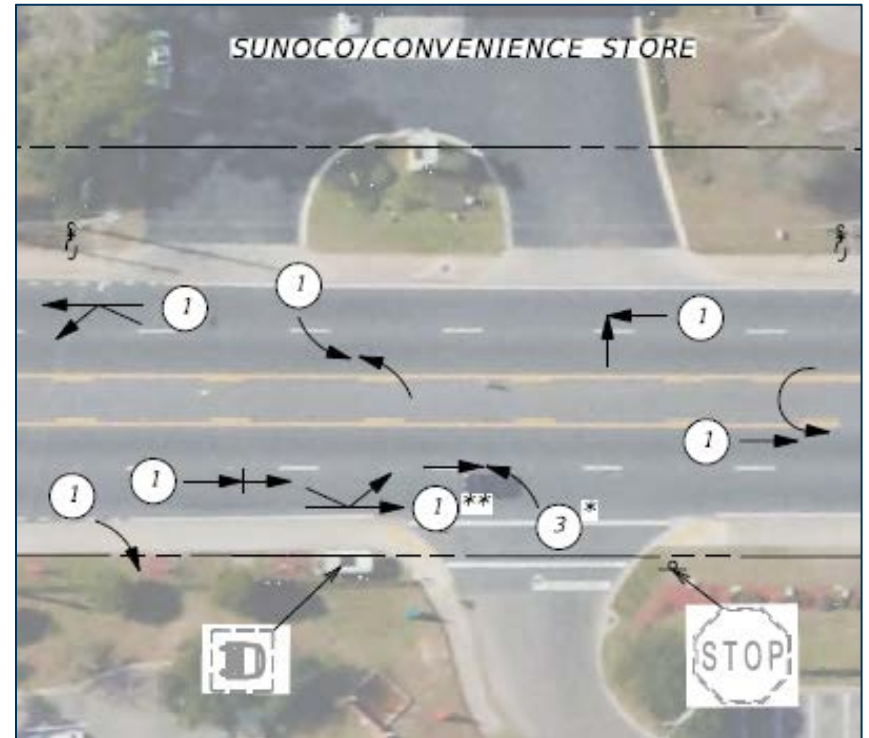
- No crashes at south end
- 75 % trips are internal to the corridor
- Most trips - Adams Place and College Club bus stop
- 68-ft crossing distance
 - 4 ft bike lanes, 5-12 ft lanes

S. Adams St. Pedestrian Safety Study – Pedestrian Counts and Crashes



S. Adams St. Pedestrian Safety Study – Pedestrian Counts and Crashes





⊗ Number of crashes

S. Adams St. Pedestrian Safety Study



Shopping Center Bus Stop



Library Driveway



Adams Place Condos



College Club Bus Stop



Northbound Bus Route



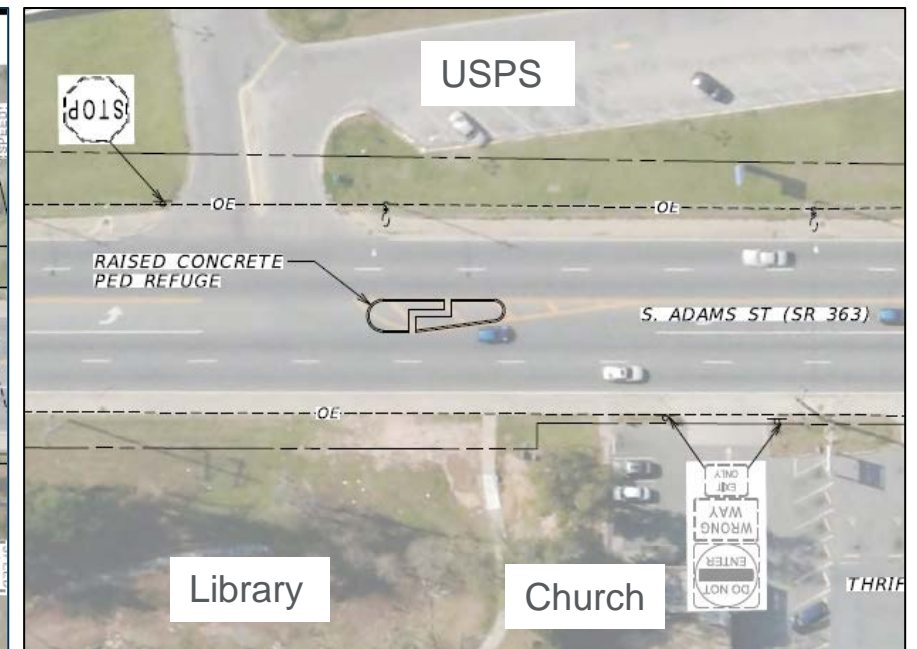
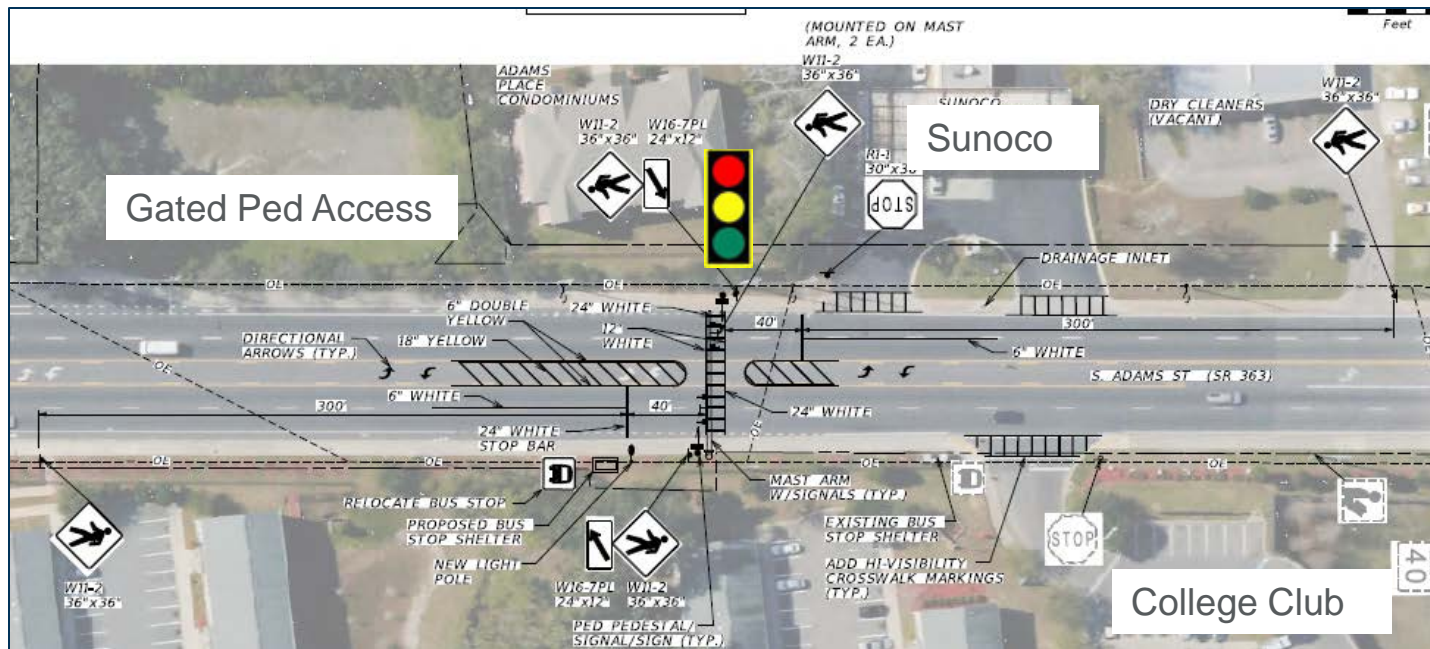
Post Office

S. Adams St. Pedestrian Safety Study – Ped/Bike Recommendations

➤ Near-term:

- Install signalized pedestrian crossing
- Install pedestrian refuge near library/post office
- Relocate College Club bus stop

Cost Estimate - \$200,000



S. Adams St. Pedestrian Safety Study – Long-term Recommendations

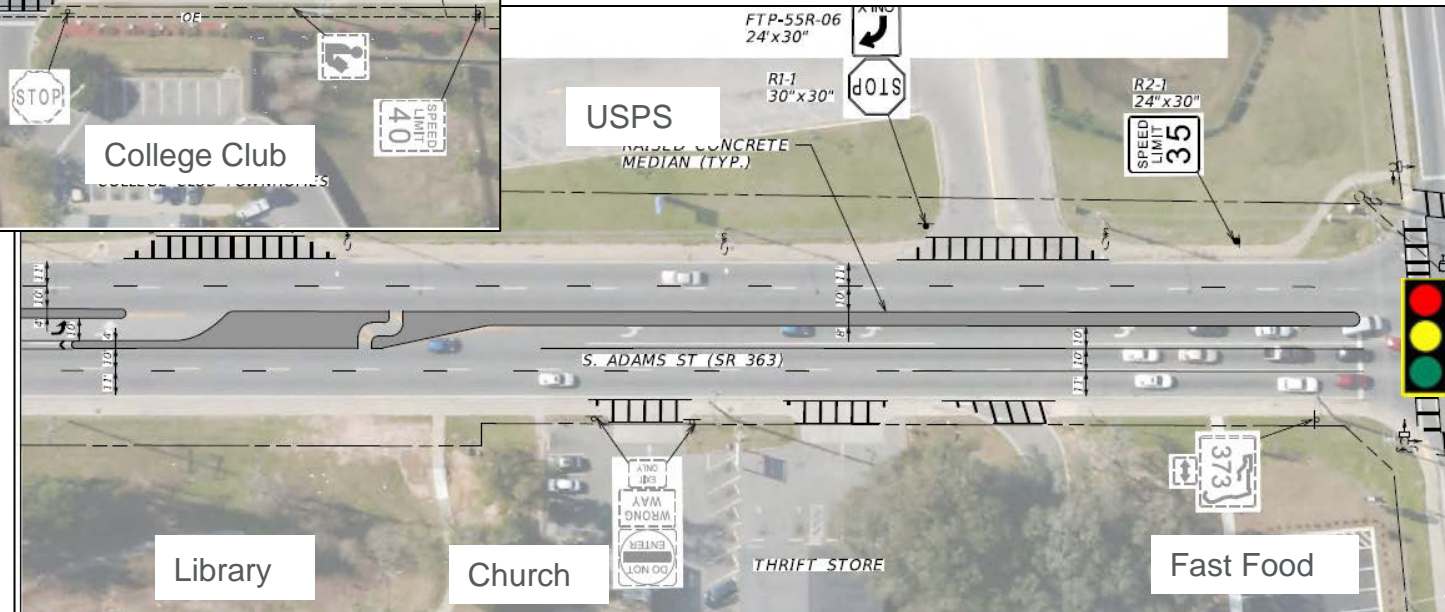
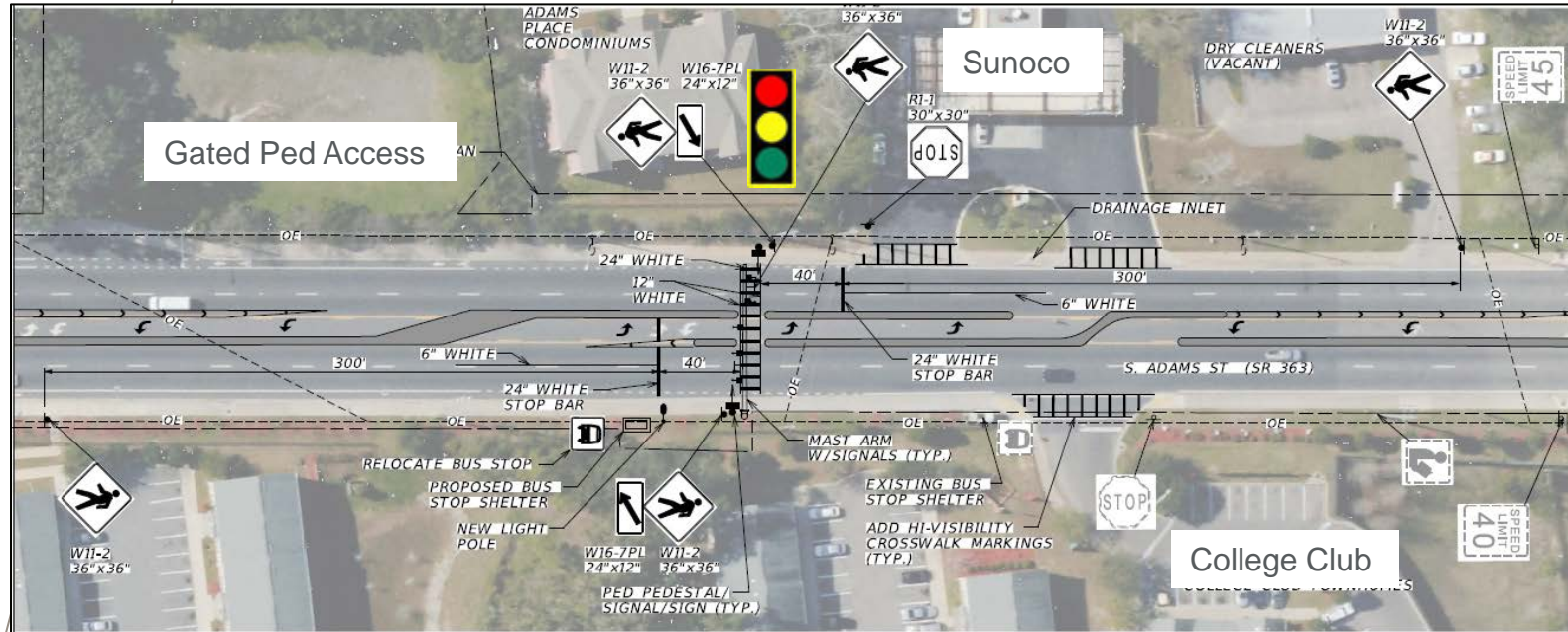
- Replace two-way-left-turn-lane with raised separator
- Reduce lane widths - 12' to 10' & 11'
- Reduce 40/45 MPH speed to 35 MPH
- Add bike shared lane signs/markings



Cost Estimate - \$1.1M



S. Adams St. Pedestrian Safety Study – Long-term Recommendations



S. Adams St. Pedestrian Safety Study

QUESTIONS?