

Alabama

Georgia



GADSDEN  
LEON  
JEFFERSON

MASTER PLAN

NORTHWEST FLORIDA

# Interstate Master Plan

FPID 42583211201



TM

GMB ENGINEERS & PLANNERS, INC.



Kimley-Horn and Associates, Inc.



NORTHWEST FLORIDA

# Interstate Master Plan

FPID 42583211201

# Welcome

## CRTPA Meeting

## November 14, 2011



CAMBRIDGE & PARTNERS, P.C.



Kimley-Horn and Associates, Inc.

## Presentation Overview

- Introduction of Project Team
- Project Study Area Limits
- Master Plan Objectives
- Project Schedule
- Current Activities
- Public Involvement Opportunities
- Contact Information
- Questions

## Key Project Team Members

### Florida Department of Transportation (FDOT)

- Ray Kirkland – FDOT Project Manager
- Dave Mulholland – Consultant Project Manager
- Richard Barr – Public Involvement /Traffic Consultant

## Project Areas

- West – Santa Rosa and Escambia Counties
- **East – Jefferson, Leon, and Gadsden Counties**
- Middle – Okaloosa, Walton, Holmes, Washington, and Jackson Counties

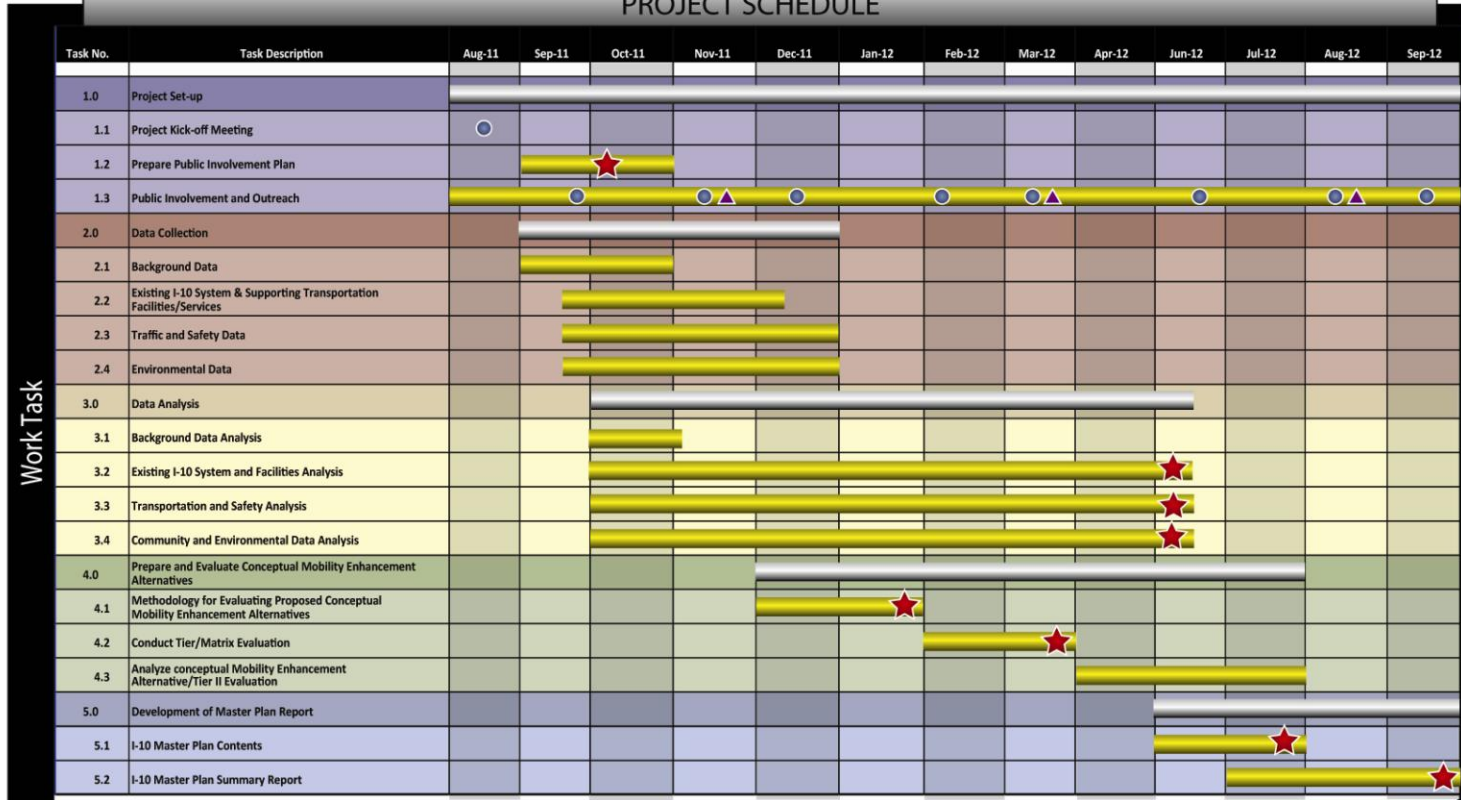


## Master Plan Objectives

- Develop an integrated transportation system that is economically efficient, environmentally sound and moves people and goods in an energy-efficient manner
- Identify potential improvements to accommodate travel demands along the I-10 corridor through year 2040
- Enhance overall travel along I-10
- Define and analyze alternatives that will improve mobility for the I-10 corridor
- Identify any additional right-of-way needed for proposed improvements and prioritize the protection of that right-of-way
- Include a staging plan that prioritizes corridor improvements and outlines funding strategies
- Coordinate with other on-going projects that would affect the I-10 corridor

## Project Schedule

### I-10 INTERSTATE MASTER PLAN - GADSDEN, LEON, AND JEFFERSON COUNTIES PROJECT SCHEDULE



Work Task

Legend

- Team Meetings/Briefings
- ★ Memorandum/Report - Deliverables
- ▲ Public Meetings
- [Grey Bar] Primary Task
- [Yellow Bar] Sub-Task



## Current Activities

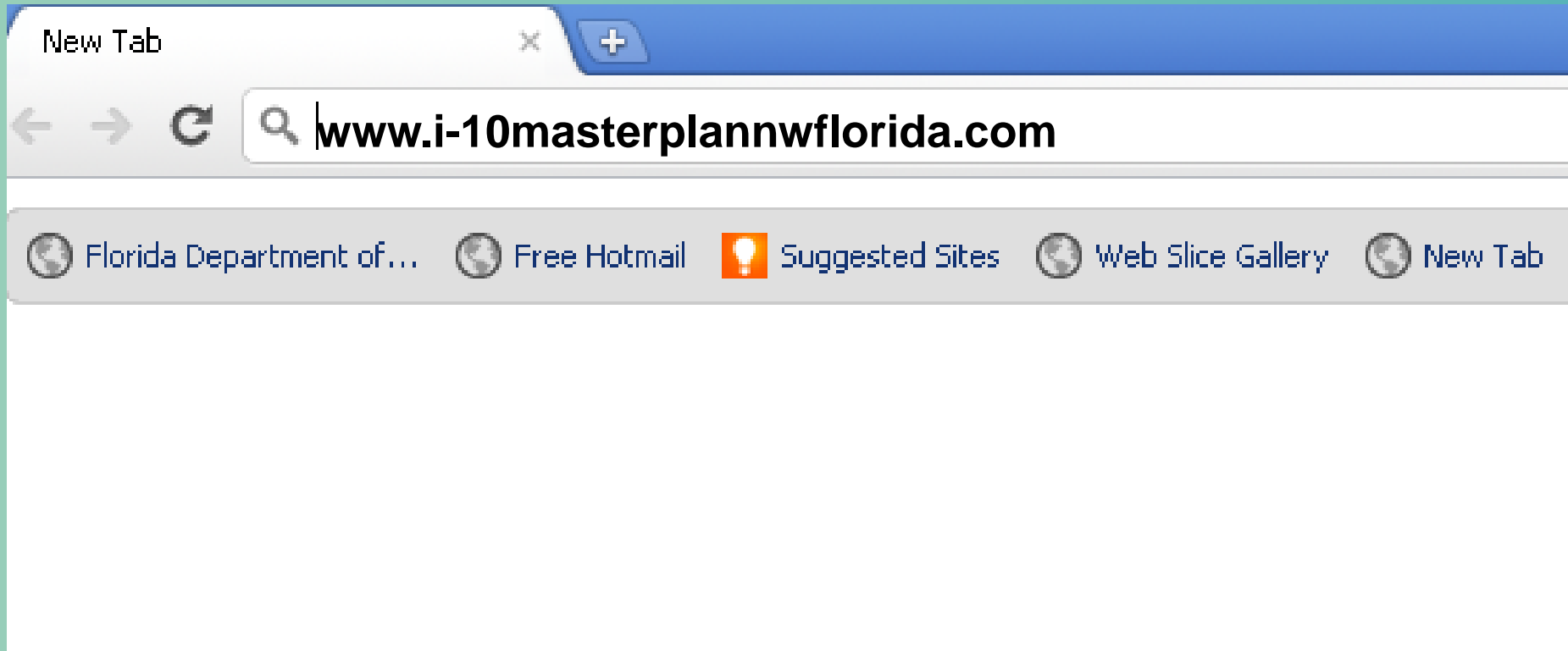
- **Data Collection**
  - Land use
  - Traffic counts
  - Crash data
  - Highway system data
  - Environmental data
- **Begin existing traffic and safety analyses**
- **Prepare Public Involvement Plan**
- **Plan for Public Kick-off Meetings**

## Public Involvement Opportunities

- **Kick-off Meetings**
  - Jefferson County – December 1<sup>st</sup> – 10:00 a.m. at County Commission Chambers
  - Leon County – December 6<sup>th</sup> – 5:30 p.m. at Renaissance Center
  - Gadsden County – November 29<sup>th</sup> – 5:30 p.m. at County Commission Chambers
- **CRTPA Briefings**
- **Alternatives Meetings**
  - First quarter 2012
- **Final Recommendations Meetings**
  - Second quarter 2012
- **Website - [www.i-10masterplannwflorida.com](http://www.i-10masterplannwflorida.com)**



## Website





NORTHWEST FLORIDA

# Interstate Master Plan

HOME

WEST SECTION

MIDDLE SECTION

**EAST SECTION**

FAQ

LINKS

CONTACT US



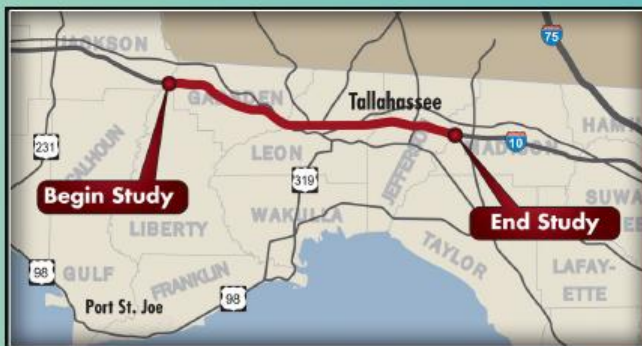
- PROJECT TIMELINE
- PUBLIC INVOLVEMENT
- PROJECT DOCUMENTS

## East Section Project Overview

The Florida Department of Transportation (FDOT), in coordination with our agency partners and public, is initiating the I-10 Interstate Master Plan. The primary purpose of the Master Plan is to develop an integrated multimodal transportation system which is economically efficient, environmentally sound, and moves people and goods in an energy efficient manner. The Master Plan is intended to address the following objectives:

1. Improve the mobility of I-10
2. Define and analyze conceptual alternatives
3. Prioritize Right-of-way protection

The study limits for the East section extend from the Gadsden County Line (western limit) to the Jefferson County Line (eastern limit). Furthermore, this project is anticipated to have a tentative 12 month schedule, completing in September of 2012.





NORTHWEST FLORIDA

# Interstate Master Plan

- HOME
- WEST SECTION
- MIDDLE SECTION
- EAST SECTION
- FAQ
- LINKS
- CONTACT US

## Northwest Florida I-10 Master Plan Questions / Feedback

First Name:

Last Name:

Email Address:

Street Address:

City, State Zip:

Join Mailing List:

Section(s) of Interest: click to select multiple

- East Section
- Middle Section
- West Section

Question/Feedback: \* required





## Contact Information

### Ray Kirkland – Project Manager

Florida Department of Transportation

District 3 Planning Office

1074 Hwy 90, Chipley, FL 32428

(888) 638-0250, Ext: 590

email: [ray.kirkland@dot.state.fl.us](mailto:ray.kirkland@dot.state.fl.us)

### Dave Mulholland – Consultant Project Manager

GMB Engineers & Planners, Inc.

(407) 898-5424

email: [dmulholland@gmb.cc](mailto:dmulholland@gmb.cc)

### Ian Satter – District Public Information Director

Florida Department of Transportation

1074 Hwy 90, Chipley, FL 32428

1-888-638-0250 Ext. 205

email: [ian.satter@dot.state.fl.us](mailto:ian.satter@dot.state.fl.us)





**Thank You!**

**Please buckle up and drive safely.**

**Stay tuned to the website for project updates.**

**[www.i-10masterplannwflorida.com](http://www.i-10masterplannwflorida.com)**

