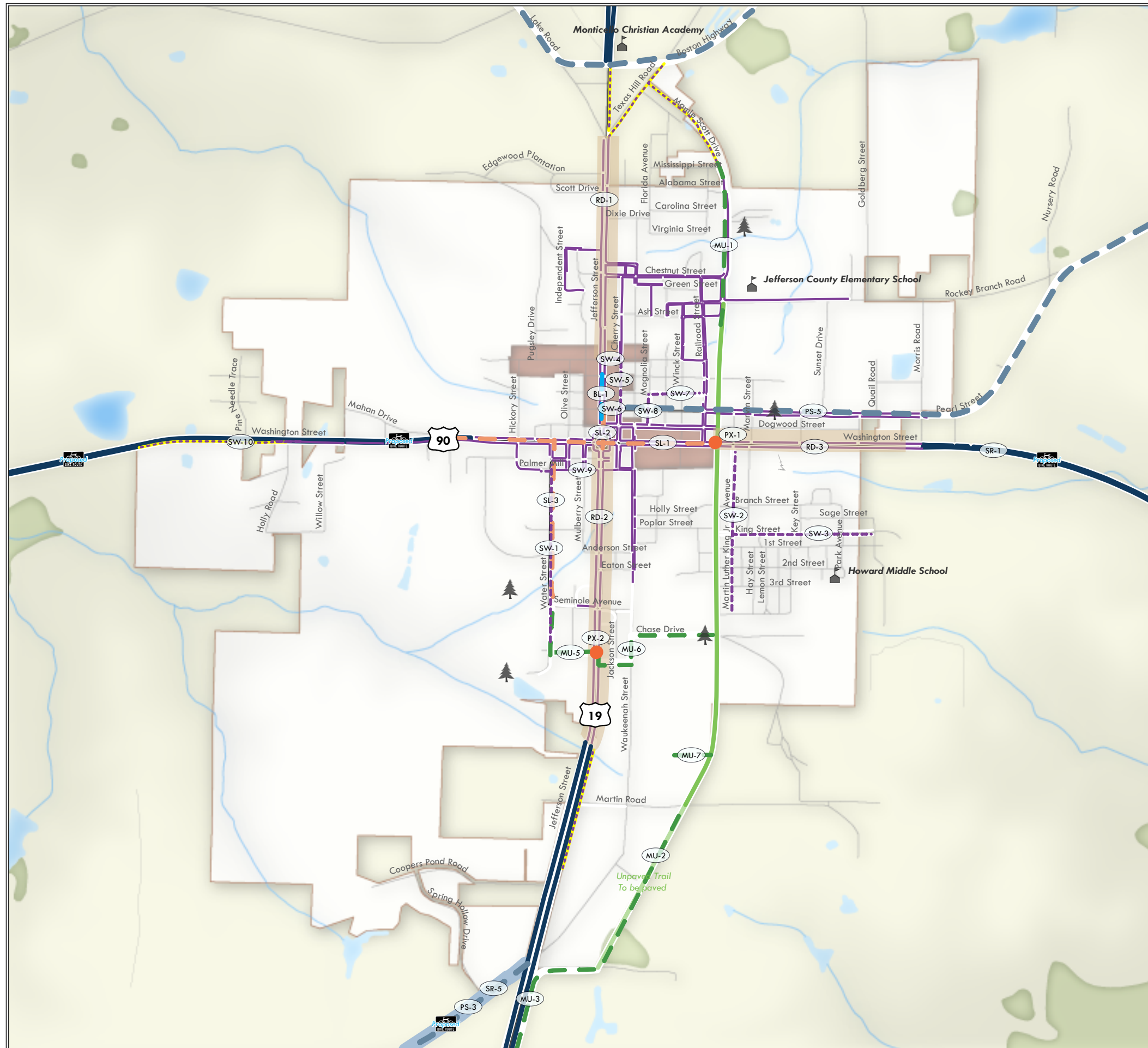


Jefferson County Bicycle and Pedestrian Master Plan

Recommended Facilities

Map ID	Roadway	From	To	Dist (miles)	Priority	Notes
Paved Shoulders - High Priority Corridors						
County's primary bicycle network						
PS-1	US 90	Leon Co line (west)	Leon Co line (east)	3.7	Tier 1	
PS-2	CR 158/Old Lloyd Rd	SR 59	US 90	8.8	Tier 1	
PS-3	CR 259/Waukeenhaw Hwy	US 27	US 19	9.5	Tier 1	
PS-4	CR 149/Boston Hwy	US 19	GA state line	8.1	Tier 1	
PS-5	CR 146/Ashville Hwy	St. Margaret Rd	US 221	14.1	Tier 1	
Paved Shoulders - Low Priority Corridors						
County's primary feeder routes						
PS-6	Lake Rd	Leon Co line	US 19	10.8	Tier 2	
PS-7	CR 158/Rabon Rd	CR 158/Old Lloyd Rd	CR 259/Waukeenhaw Hwy	3.3	Tier 2	
PS-8	Whitehouse Rd	Leon Co line	SR 59	2.9	Tier 2	
PS-9	CR 158/Drifton-Aucilla Rd	Turkey Scratch Rd	CR 257	5.2	Tier 2	
PS-10	Bassett Dairy Rd	CR 146/Ashville Hwy	CR 257/North Salt Rd	4.6	Tier 2	
PS-11	CR 158B/Nash Rd	CR 259/Waukeenhaw Hwy	US 19	1.9	Tier 2	
Share the Road Signage - Priority Corridors						
Relatively inexpensive improvements - high value						
SR-1	US 90	Leon Co line (west)	Madison Co line	19.9	Tier 1	
SR-2	CR 158/Old Lloyd Rd	Leon Co line	US 90	10.0	Tier 1	
SR-3	SR 59	CR 259/Waukeenhaw Hwy	US 90	12.1	Tier 1	
SR-4	CR 257	US 19	CR 146/Ashville Hwy	16.6	Tier 1	
SR-5	CR 259/Waukeenhaw Hwy	Leon Co line	US 19	19.8	Tier 1	
Multi-Use Trail						
MU-1	Ike Anderson Trail Northern Extension	Rocky Branch Rd	Jefferson Co Recreation Park	0.4	Tier 2	
MU-2	Ike Anderson Trail Southern Extension I	Martin Rd	US 19 at Nacoosa Rd	0.8	Tier 2	
MU-3	Ike Anderson Trail Southern Extension II	US 19 at Nacoosa Rd	US 19 at Drifton-Aucilla Rd	1.7	Tier 2	
MU-4	Ike Anderson Trail Southern Extension III	US 19 at Drifton-Aucilla Rd	Jefferson Co MS/HS	0.7	Tier 2	
MU-5	Water St Eco-Park Trail Connector	Water St at Seminole Ave	US 19 at Cherokee St	0.3	Tier 1	Multimodal connection/crossing at major highway and shopping destination
MU-6	Water St Eco-Park Trail Connector	US 19 at Cherokee St	Ike Anderson Trail at Chase Dr	0.4	Tier 1	Multimodal connection/crossing at major highway and shopping destination
MU-7	Elliot Dr Connector	Elliot Dr at Melrose Dr	Ike Anderson Trail	0.04	Tier 3	Feasibility: easement, acquisition?
MU-8	Progress Energy Rail Trail I	GA state line	Lake Rd	5.8	Tier 3	
MU-9	Progress Energy Rail Trail II	Lake Rd	US 90	5.2	Tier 3	
MU-10	Progress Energy Rail Trail III	US 90	US 19	3.8	Tier 3	
MU-11	Progress Energy Rail Trail IV	US 19	Thompson Valley Rd	2.2	Tier 3	
MU-12	Progress Energy Rail Trail V	Thompson Valley Rd	CR 257	6.9	Tier 3	
Road Diet						
Complete as part of future resurfacing project						
RD-1	US 19	0.1 mi north of Madison St	Texas Hill Rd	0.6	Tier 2	From 4LU + parking to 3LU+bike lanes+parking
RD-2	US 19	0.25 mi south of E. Cherokee St	Courthouse Circle	0.9	Tier 2	From 4/5LU+some parking to 3LU+bike lanes+some parking
RD-3	US 90	Ike Anderson Trail	0.1 mi west of St. Margaret Rd	0.6	Tier 2	From 4LU + parking to 3LU+bike lanes+parking
Bicycle Lanes						
BL-1	US 19	Pearl St	0.1 mi north of Madison St	0.25	Tier 2	Complete as part of future resurfacing project
Shared Lane Markings						
Complete as part of future resurfacing project						
SL-1	US 90	0.05 mi east of Mahan Dr	Ike Anderson Trail	0.8	Tier 2	Downtown 'main street'
SL-2	US 19	Courthouse Cir (south side)	Pearl St	0.15	Tier 2	Downtown 'main street'
SL-3	Water St	Seminole Ave	US 90	0.5	Tier 2	Multimodal connector between shopping/business destinations
Sidewalks						
SW-1	Water St (east side)	Walnut St	Seminole Ave	0.5	Tier 2	
SW-2	Martin Luther King Jr Ave	US 90	3rd St	0.4	Tier 3	Constrained ROW; shallow building setbacks
SW-3	King St	Ike Anderson Trail	Sage St	0.5	Tier 2	Constrained ROW; shallow building setbacks
SW-4	Madison St	US 19	Cherry St	0.06	Tier 1	Downtown Monticello's primary pedestrian network
SW-5	Cherry St	Pearl St	Madison St	0.14	Tier 1	Downtown Monticello's primary pedestrian network
SW-6	Pearl St	US 19	Cherry St	0.06	Tier 1	Downtown Monticello's primary pedestrian network
SW-7	High St	Magnolia St	Railroad St	0.15	Tier 1	Downtown Monticello's primary pedestrian network
SW-8	Magnolia St	Dogwood St	High St	0.09	Tier 1	Downtown Monticello's primary pedestrian network
SW-9	Palmer Mills Rd	150 ft west of Water St	Water St	0.03	Tier 1	Downtown Monticello's primary pedestrian network
SW-10	US 90	300 ft west of Holly Rd	Holly Rd	0.06	Tier 1	Add to adjacent programmed sidewalk project
Pedestrian Crossing Enhancements						
PX-1	US 90	at Ike Anderson Trail		N/A	Tier 1	Important trail crossing at major highway
PX-2	US 19	at Cherokee St/Jefferson Square Shopping Center		N/A	Tier 1	Major shopping destination; challenging crossing
PX-3	Ike Anderson Trail	at various cross streets		N/A	Tier 3	Mostly minor crossings
PX-4	Downtown Courthouse Area	various intersections		N/A	Tier 1	8 intersections; curb extensions; crosswalk enhancements; valley gutters...
PX-5	Jefferson Co ES Area	various intersections		N/A	Tier 2	Mostly minor crossing improvements






Refined Bicycle and Pedestrian Facilities Map

Monticello and Vicinity

BICYCLE AND PEDESTRIAN FACILITIES

Existing Facilities

-  Sidewalk
-  Paved Shoulder
-  Shared Use Path




Programmed Facilities

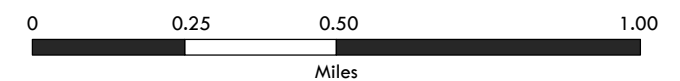
-  Sidewalk

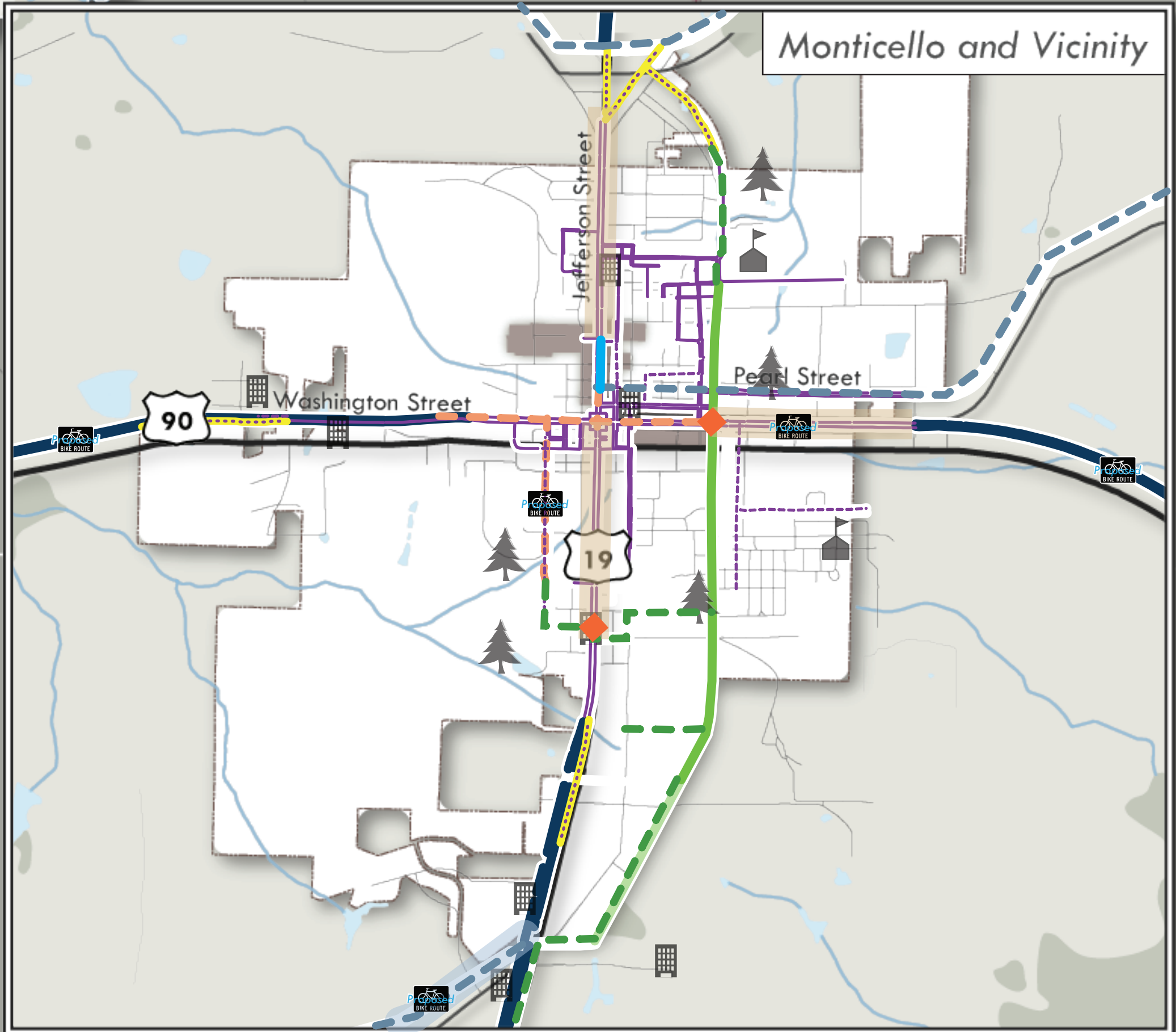
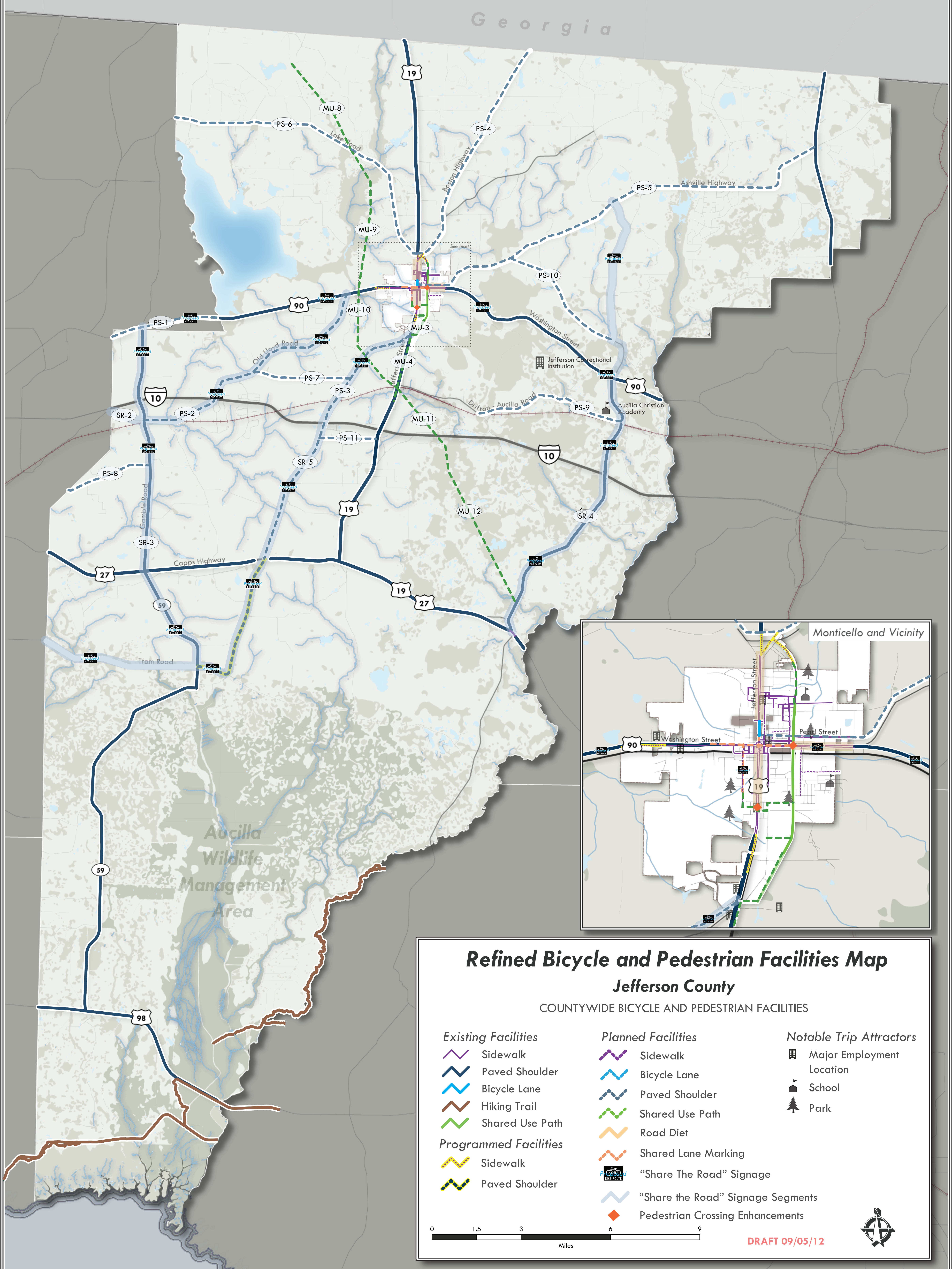
Planned Facilities

-  Sidewalk
-  Bicycle Lane
-  Paved Shoulder
-  Shared Use Path
-  Road Diet
-  Shared Lane Marking
-  "Share The Road" Signage
-  "Share the Road" Signage Segments
-  Pedestrian Crossing Enhancements

Notable Trip Attractors

-  School
-  Park
-  Historic District





Refined Bicycle and Pedestrian Facilities Map Jefferson County

COUNTYWIDE BICYCLE AND PEDESTRIAN FACILITIES

- | Existing Facilities | Planned Facilities | Notable Trip Attractors |
|------------------------------|-----------------------------------|---------------------------|
| Sidewalk | Sidewalk | Major Employment Location |
| Paved Shoulder | Bicycle Lane | School |
| Bicycle Lane | Paved Shoulder | Park |
| Hiking Trail | Shared Use Path | |
| Shared Use Path | Road Diet | |
| Programmed Facilities | Shared Lane Marking | |
| Sidewalk | "Share The Road" Signage | |
| Paved Shoulder | "Share the Road" Signage Segments | |
| | Pedestrian Crossing Enhancements | |



DRAFT 09/05/12

