



GADSDEN COUNTY

Bicycle AND Pedestrian

FACILITIES MASTER PLAN



Kimley-Horn
and Associates, Inc.



Public Participation

- Stakeholder Interviews throughout October, 2011
- Project Newsletter #1
- Public workshop on January 23, 2012
- Advisory Committee
- Workshops with citizens and Board of County Commissioners
- Project Newsletter #2 – Executive Summary





GADSDEN COUNTY

Bicycle AND Pedestrian

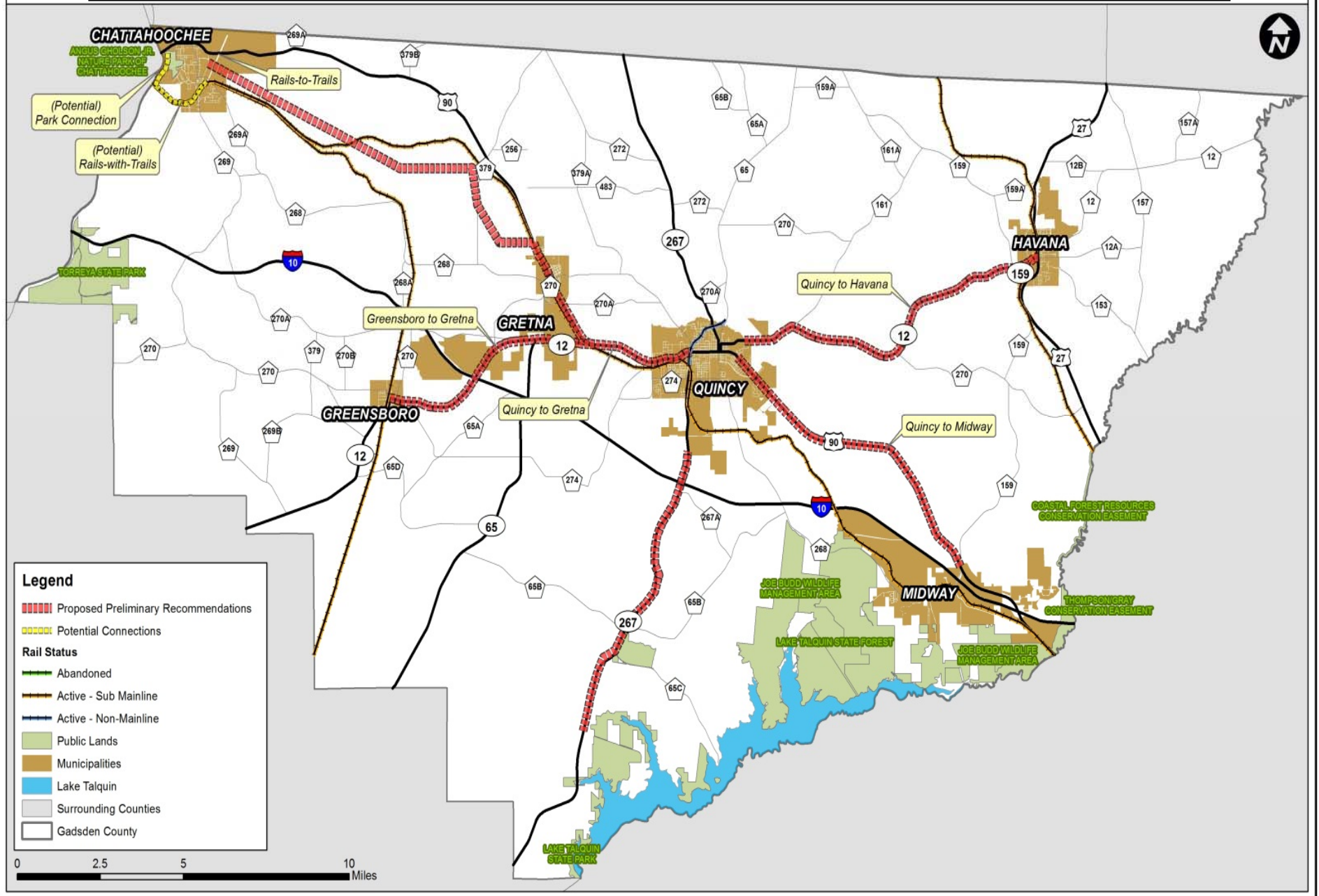
FACILITIES MASTER PLAN



Bicycle Facility Recommendations

- Shared Use Paths connecting:
 - Quincy and Havana (Florida Arts Bicycle Trail)
 - Quincy and Gretna
 - Gretna and Greensboro
 - Gretna and Chattahoochee
 - Quincy and Midway
 - Quincy and Lines Tract
- Potential Rails-with-Trails Connection in Chattahoochee

Gadsden County Bicycle Recommendations





GADSDEN COUNTY

Bicycle AND Pedestrian

FACILITIES MASTER PLAN



Florida Arts Multiuse Trail

- #1 Ranked Project
- Corridor along SR 12 between Quincy and Havana
- Feasibility Study Completed
- Paved multiuse trail located on the south side of SR 12
- Trail would begin in Quincy and terminate in Havana
- Total trail length would be approximately 10 miles
- Future connection to Eugene Lamb Jr. Community Park



GADSDEN COUNTY

Bicycle AND Pedestrian

FACILITIES MASTER PLAN



Bicycle Policy Recommendations

- Providing paved shoulders, designated bicycle lanes, and multiuse trails as appropriate to roadway corridors as appropriate to the context of the corridor
- Establishing maintenance policies for bicycle facilities
- Update the Land Development Code to address bicycle parking
- Establish a Bicycle Advisory Committee
- Designate a Bicycle Program Manager



GADSDEN COUNTY

Bicycle AND Pedestrian

FACILITIES MASTER PLAN



Mountain Biking Recommendations

- Provide signage and wayfinding to the Lines Tract Trail
- Coordinate with Tourism Development Council to promote Lines Tract and mountain biking-camping opportunities
- Coordinate with Florida Forest Service for regular maintenance of Lines Tract Trail and campground
- Create an information brochure for distribution to area cycling clubs: “Make it a Day: MTB Gadsden”
 - Including restaurant, gallery information



GADSDEN COUNTY

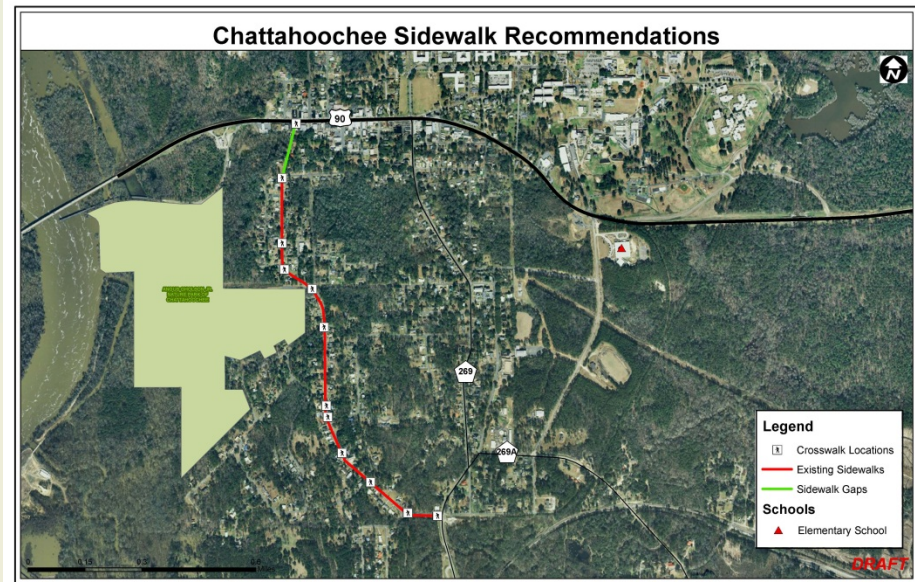
Bicycle AND Pedestrian

FACILITIES MASTER PLAN



Pedestrian Recommendations:

- **Chattahoochee:**
 - Morgan Avenue- upgrade sidewalks to current standards and fill in network gaps
- **Gretna:**
 - Provide sidewalks along US 90 from Earnest Barkley Street to Hardaway Highway





GADSDEN COUNTY

Bicycle AND Pedestrian

FACILITIES MASTER PLAN



Pedestrian Recommendations:

- **Midway:**
 - Provide sidewalks in Rustling Pines subdivision
- **Quincy:**
 - Provide sidewalks and crosswalks on US 90 from Pittman Street to Love Street
 - Streetscape on Monroe Street to Tanyard Creek Park





GADSDEN COUNTY

Bicycle AND Pedestrian

FACILITIES MASTER PLAN



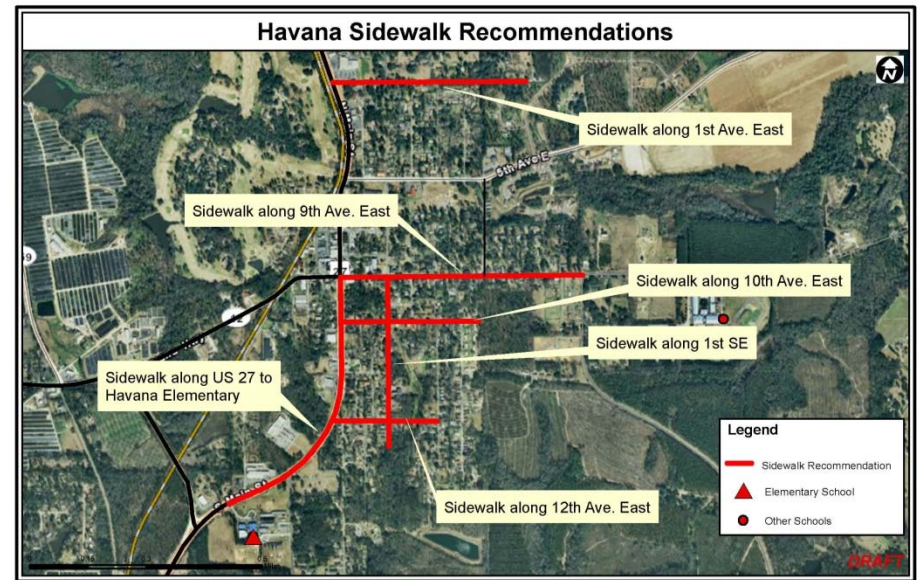
Pedestrian Recommendations:

- **Greensboro:**

- Improve connections between West Gadsden High School and Greensboro Elementary

- **Havana:**

- 1st Ave. East
- 9th Ave. East
- 10th Ave. East
- 12th Ave. East
- 1st St. SE
- 5th St. NE
- South Main St.
- US 27 to Havana Elementary





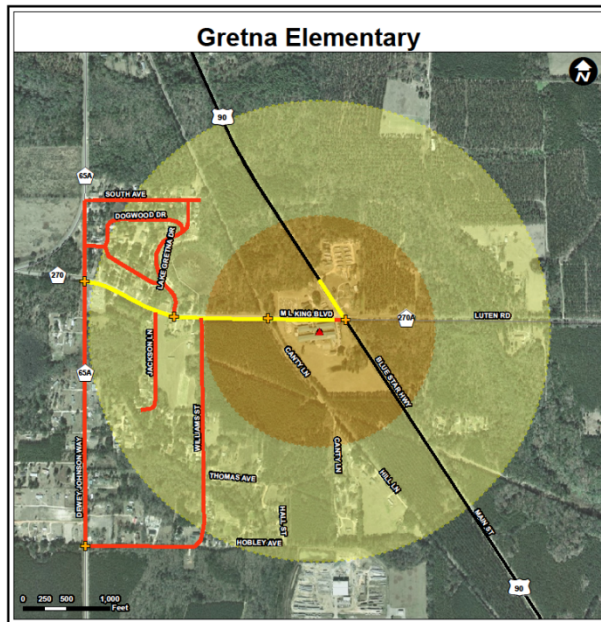
GADSDEN COUNTY

Bicycle AND Pedestrian

FACILITIES MASTER PLAN



School Connectivity



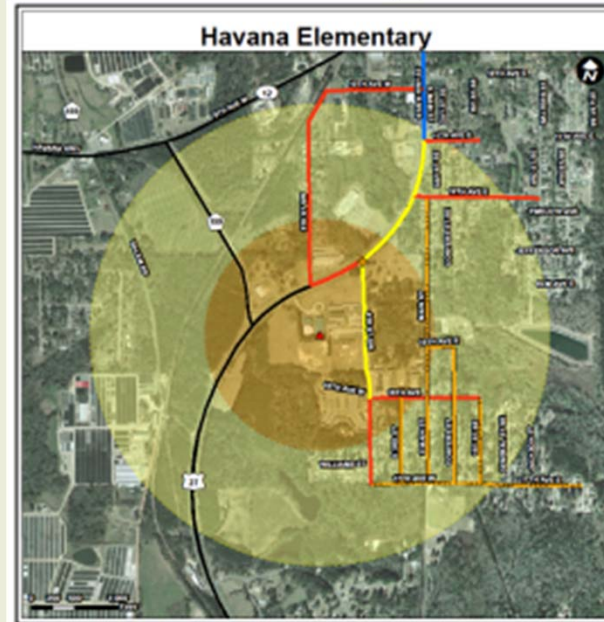
Legend

Identified Safe Routes to School Recommendations

- Sidewalk gaps
- Sidewalk gaps with constraints
- Sidewalks located on both sides of street
- Sidewalk located on one side of street
- ◆ Identified intersection improvement needs

Schools

- ▲ Elementary School
- ▲ Middle School
- ▲ Specialty School
- Other Schools
- 1/4 Mile distance around school
- 1/2 Mile distance around school



Legend

Identified Safe Routes to School Recommendations

- Sidewalk gaps
- Sidewalk gaps with constraints
- Sidewalks located on both sides of street
- Sidewalk located on one side of street
- ◆ Identified intersection improvement needs

Schools

- ▲ Elementary School
- ▲ Middle School
- ▲ Specialty School
- Other Schools
- 1/4 Mile distance around school
- 1/2 Mile distance around school



GADSDEN COUNTY

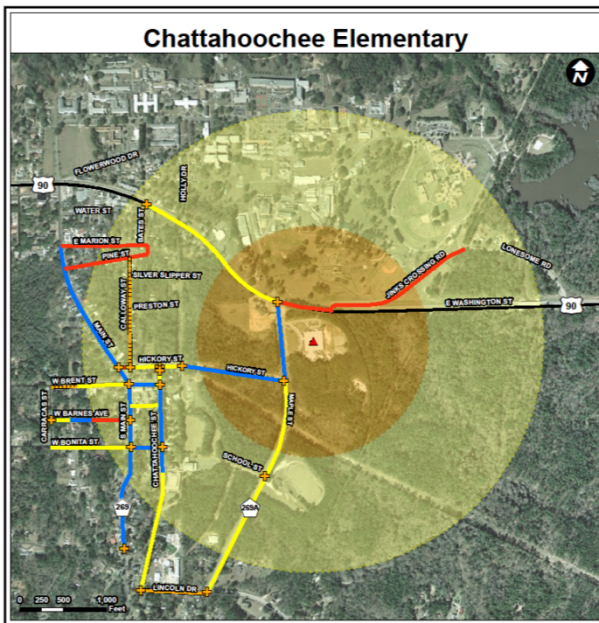
Bicycle AND Pedestrian

FACILITIES MASTER PLAN



School Connectivity

Chattahoochee Elementary



Legend

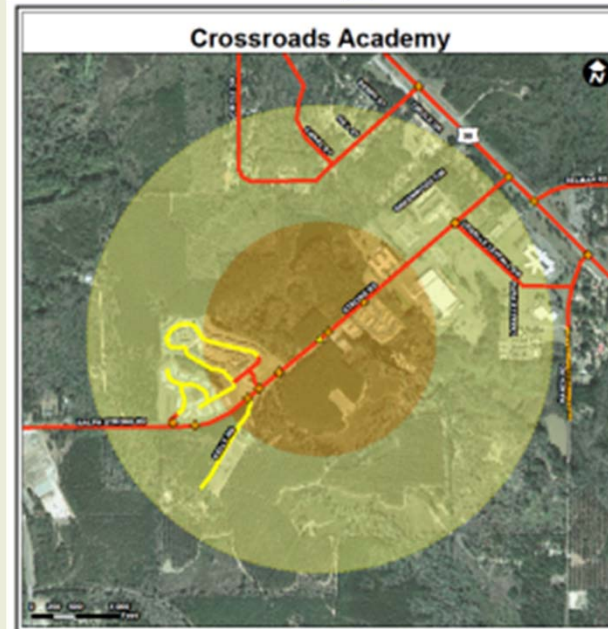
Identified Safe Routes to School Recommendations

- Sidewalk gaps
- Sidewalk gaps with constraints
- Sidewalks located on both sides of street
- Sidewalk located on one side of street
- ◆ Identified intersection improvement needs

Schools

- ▲ Elementary School
- ▲ Middle School
- ▲ Specialty School
- Other Schools
- 1/4 Mile distance around school
- 1/2 Mile distance around school

Crossroads Academy



Legend

Identified Safe Routes to School Recommendations

- Sidewalk gaps
- Sidewalk gaps with constraints
- Sidewalks located on both sides of street
- Sidewalk located on one side of street
- ◆ Identified intersection improvement needs

Schools

- ▲ Elementary School
- ▲ Middle School
- ▲ Specialty School
- Other Schools
- 1/4 Mile distance around school
- 1/2 Mile distance around school



GADSDEN COUNTY

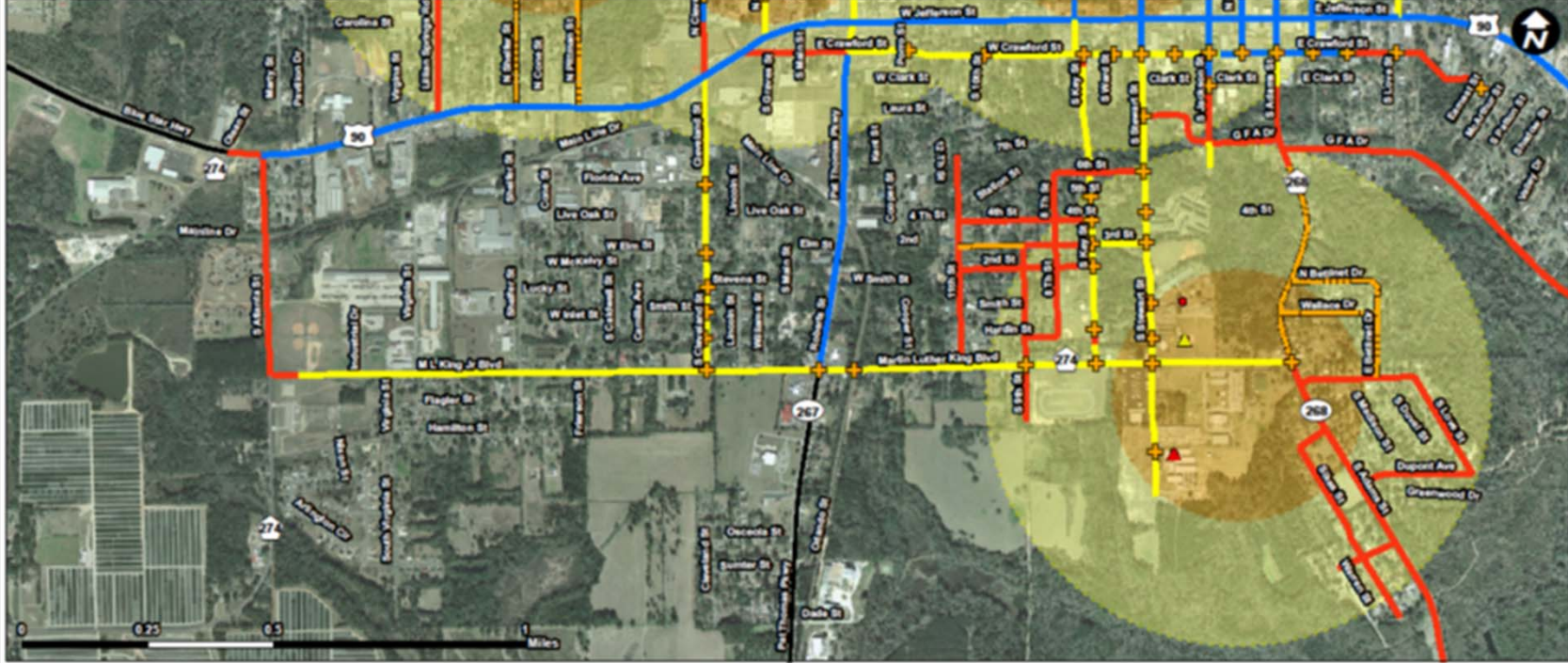
Bicycle AND Pedestrian

FACILITIES MASTER PLAN



Safe Routes to Schools

Carter Parramore Academy/Stewart Street Elementary





GADSDEN COUNTY

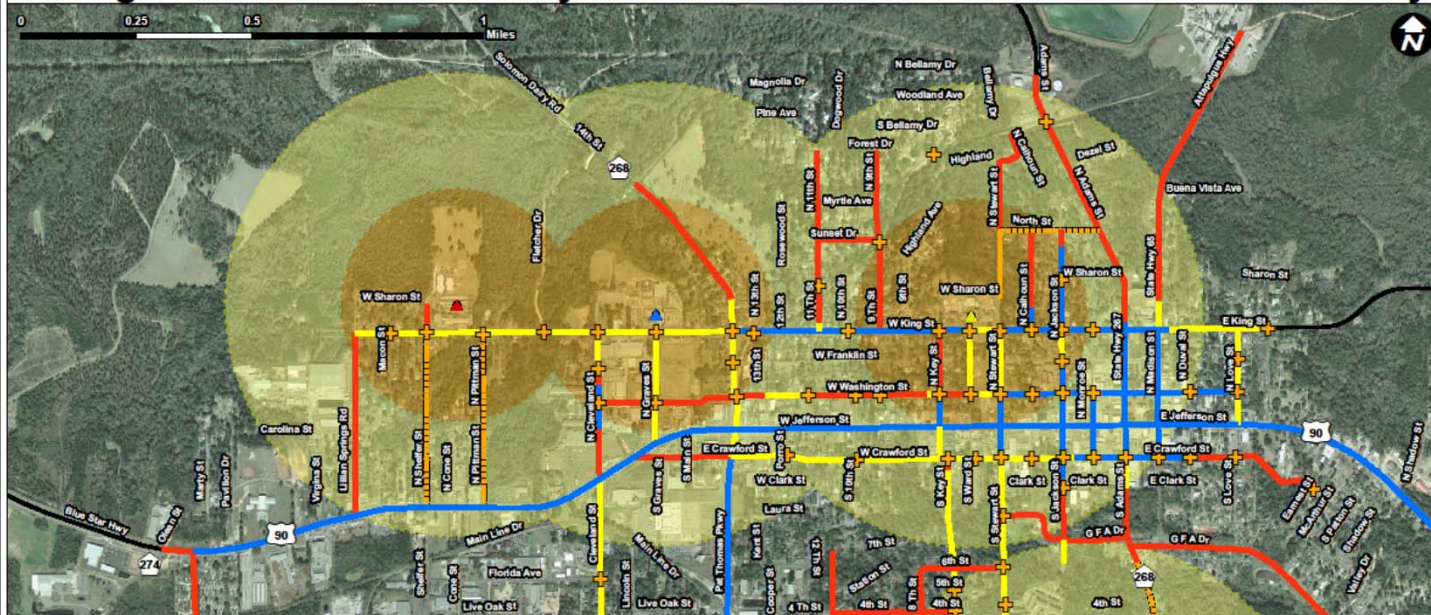
Bicycle AND Pedestrian

FACILITIES MASTER PLAN



School Connectivity

George W Munroe Elementary/James A Shanks Middle/Gadsden Elementary





GADSDEN COUNTY

Bicycle AND Pedestrian

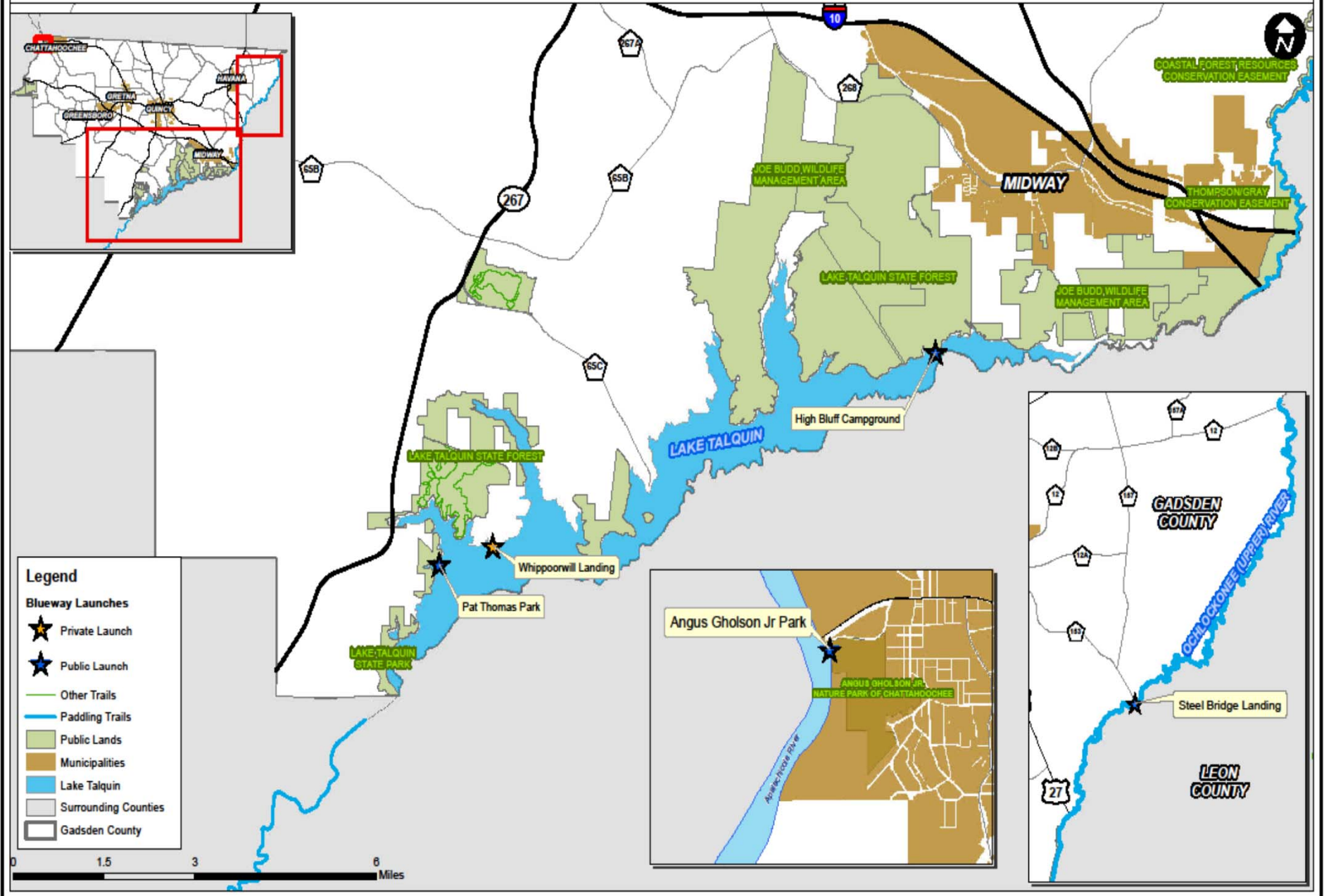
FACILITIES MASTER PLAN



Blueway Recommendations

- Promote ecotourism by enhancing opportunities on Lake Talquin
- Construct dry launches for use by canoes and kayaks where appropriate
- Provide amenities such as trash cans, changing areas, and picnic tables where appropriate
- Implement wayfinding signage
- Coordinate with State parks for funding and promotion

Gadsden County Blueways Facilities





GADSDEN COUNTY

Bicycle AND Pedestrian

FACILITIES MASTER PLAN



- Gateway features
- Informational kiosks
- Civic building markers
- Park signs
- Landmark signs
- Vehicular directional signs
- Pedestrian directional signs
- Bicycle mile markers





GADSDEN COUNTY

Bicycle AND Pedestrian

FACILITIES MASTER PLAN



Funding Strategies

- CRTPA
- Office of Greenways and Trails - Recreational Trails Program
- Small Cities Community Development Block Grant Program
- Florida Community Trust's Florida Forever Grant Program
- FDOT Enhancements
- VisitFlorida Grants
- US Department of Agriculture Grants and Loan Program
- Bikes Belong Coalition Grant Program
- Florida Recreation and Development Assistance Grant Program
- Bike Florida Mini-Grants
- Safe Routes to Schools
- Land and Water Conservation
- Florida Boating Improvements Program



GADSDEN COUNTY

Bicycle AND Pedestrian

FACILITIES MASTER PLAN



Kimley-Horn
and Associates, Inc.