

WAKULLA COUNTY



Bicycle, Pedestrian and Blueways Facilities Master Plan





Public Participation

- Stakeholder interviews in August 2011
- Project Newsletter #1
- Advisory Committee
- Public Workshop on February 16th, 2012
- Workshops with the public and Board of County Commissioners
- Project Newsletter #2 – Executive Summary



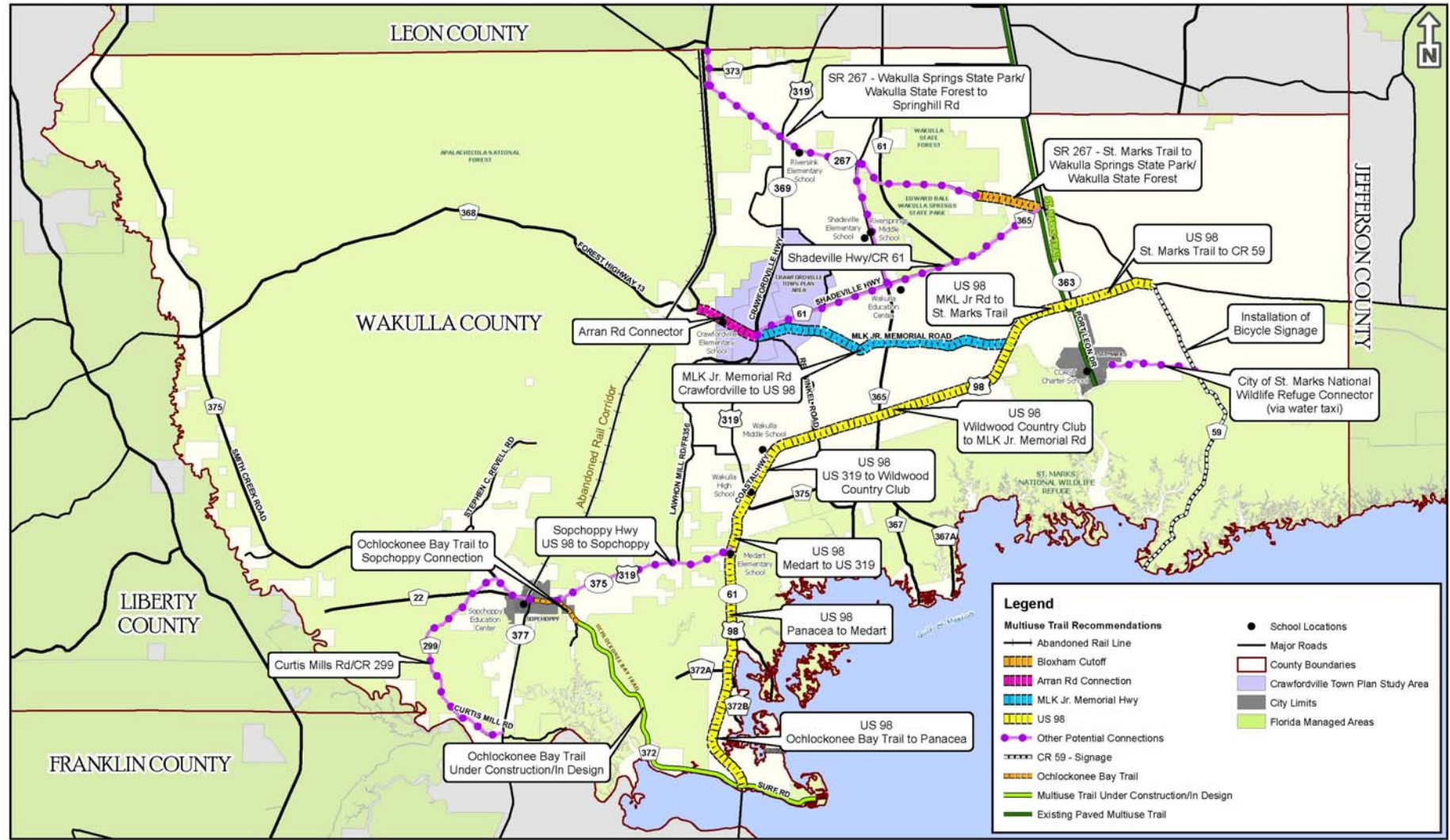


Bicycle Facility Recommendations

- Ochlockonee Bay Trail to Sopchoppy Connection
- US 98 – Surf Road to CR 59
 - Segment 1 – US 319 to Wildwood Golf Course
 - Segment 2 – Wildwood to MLK Jr. Memorial Highway
 - Segment 3 – MLK Jr. Memorial Road to St. Marks Trail
 - Segment 4 – St. Marks Trail to CR 59
 - Segment 5 – Surf Road to Panacea
 - Segment 6 – Panacea to Medart
 - Segment 7 – Medart to US 319 US 98 Intersection
- Martin Luther King Jr. Memorial Road
- Arran Road
- SR 267 - St. Marks Trail to abandoned rail corridor
 - Segment 1 – St. Marks Trail to Wakulla Springs State Park
 - Segment 2 – Wakulla Springs State Park to abandoned rail corridor
- Shadeville Highway
- Sopchoppy Highway – US 319 from US 98 to Sopchoppy
- Curtis Mills Road
- CR 59



WAKULLA COUNTY BICYCLE FACILITY RECOMMENDATIONS



0 2.5 5 Miles

Disclaimer: Data presented in this document are based on GIS data from various sources and are subject to further refinement following field reconnaissance. Kimley-Horn and Associates cannot be held responsible for inaccuracies in the data presented in this document.

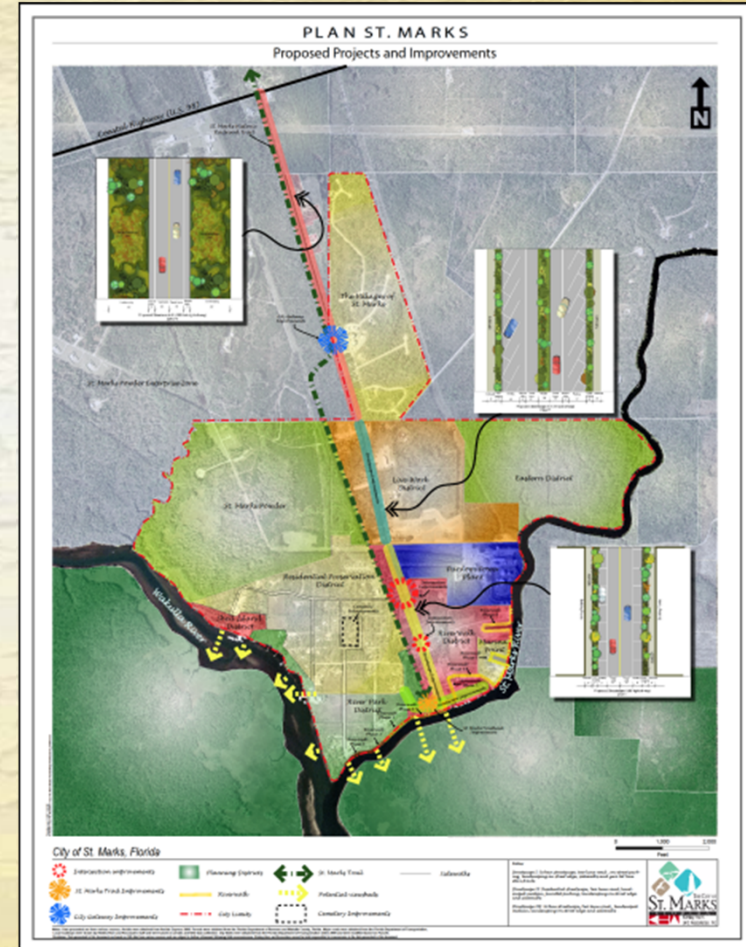
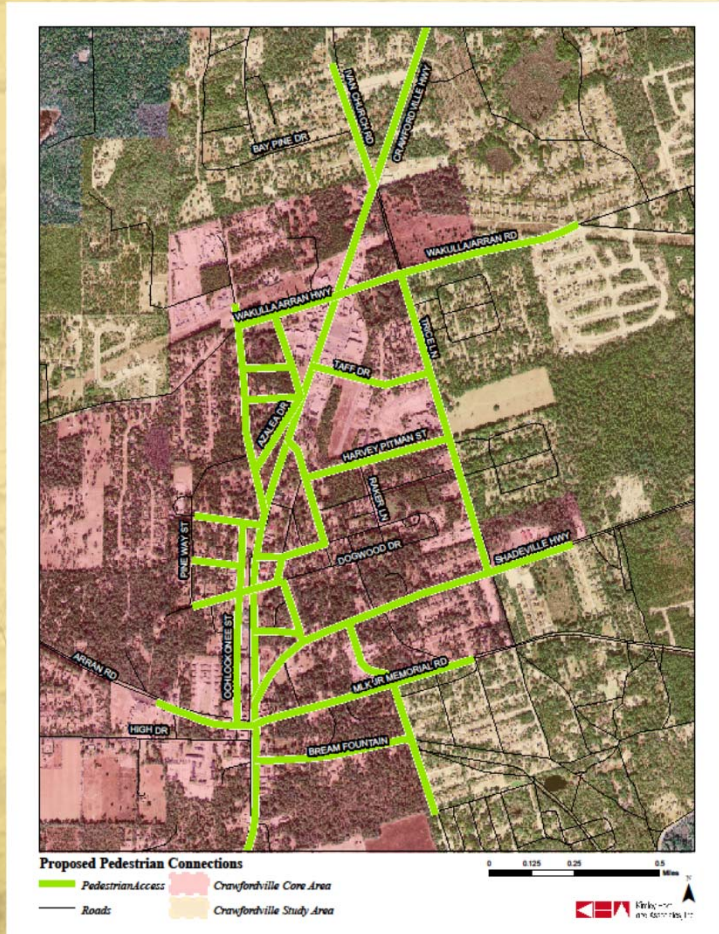


Bicycle Policy Recommendations

- Provide paved shoulders, designated bicycle lanes, sharrows, and multiuse trails as appropriate to the context of the corridor
- Follow design guidelines
- Establish maintenance policies for bicycle facilities
- Update the Land Development Code to address bicycle parking
- Establish a Bicycle Advisory Committee
- Designate a Bicycle Program Manager

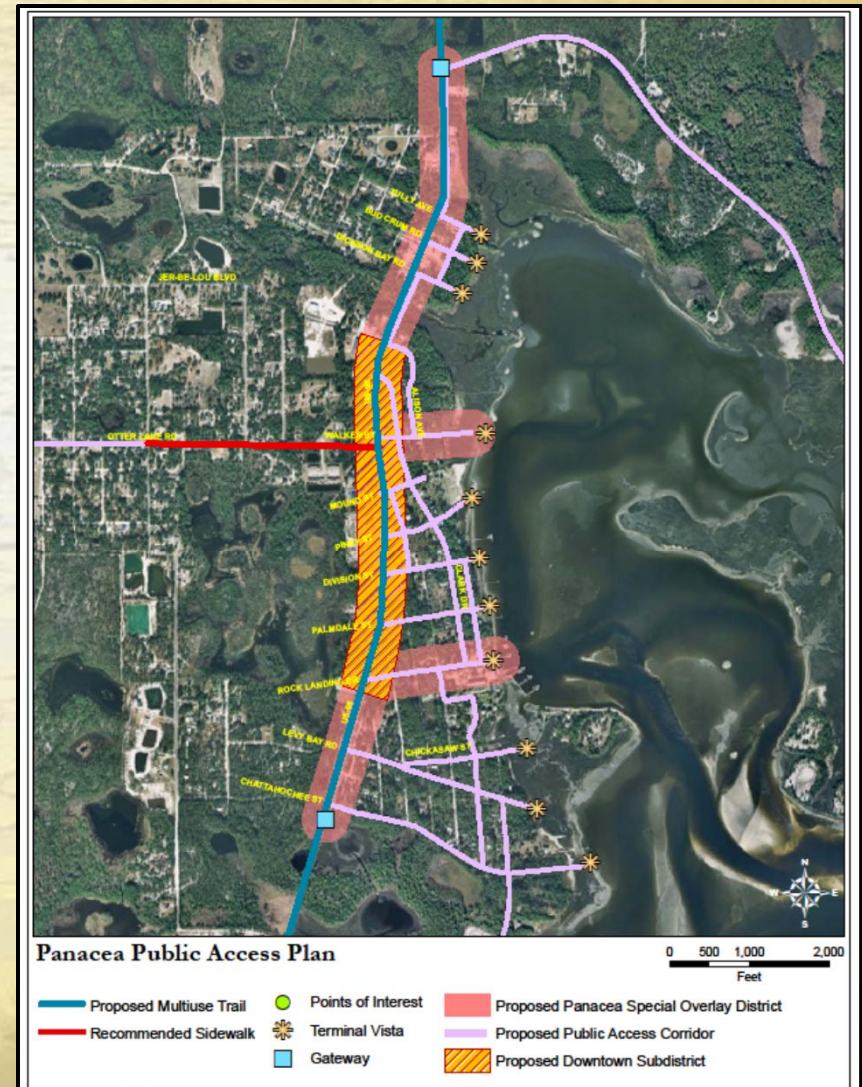
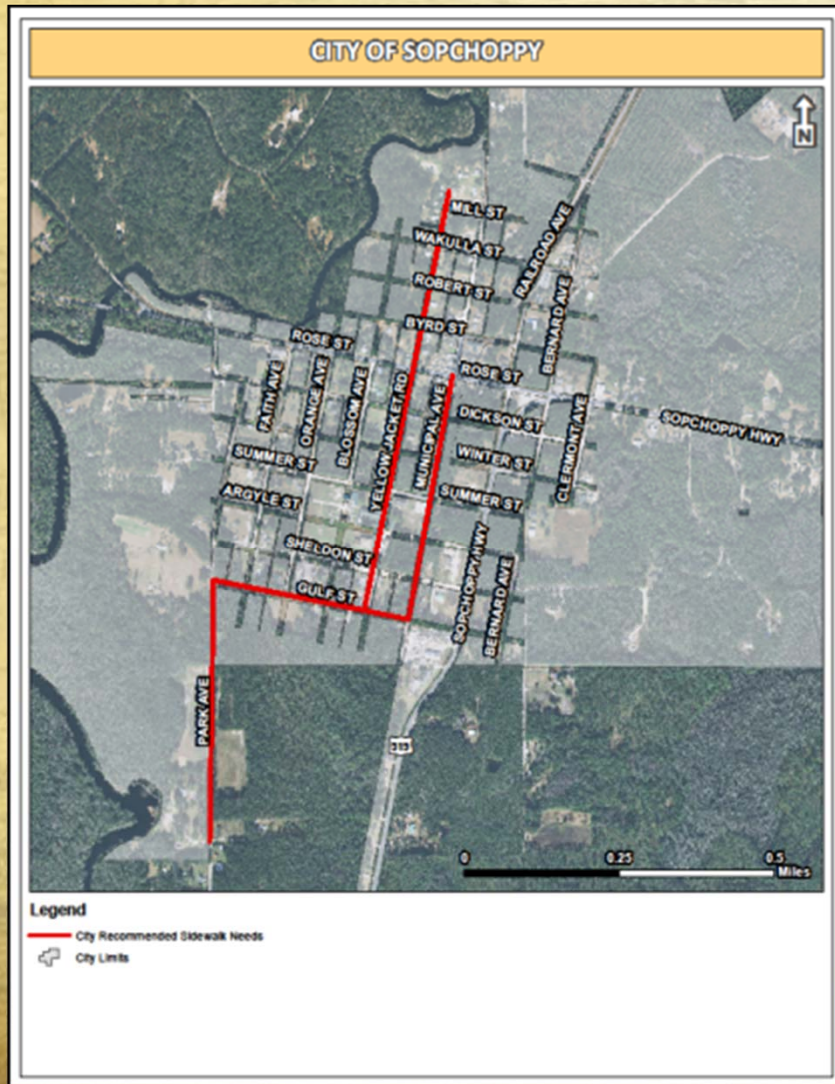


Crawfordville and St. Marks





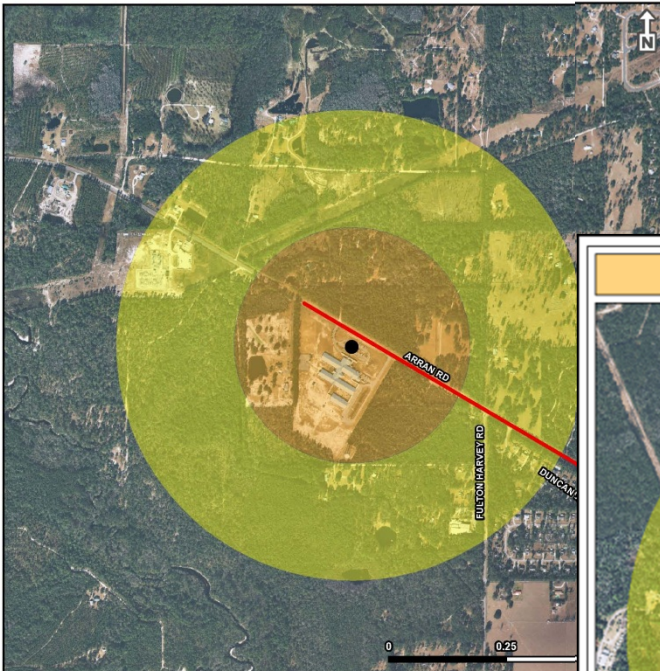
Sopchoppy and Panacea





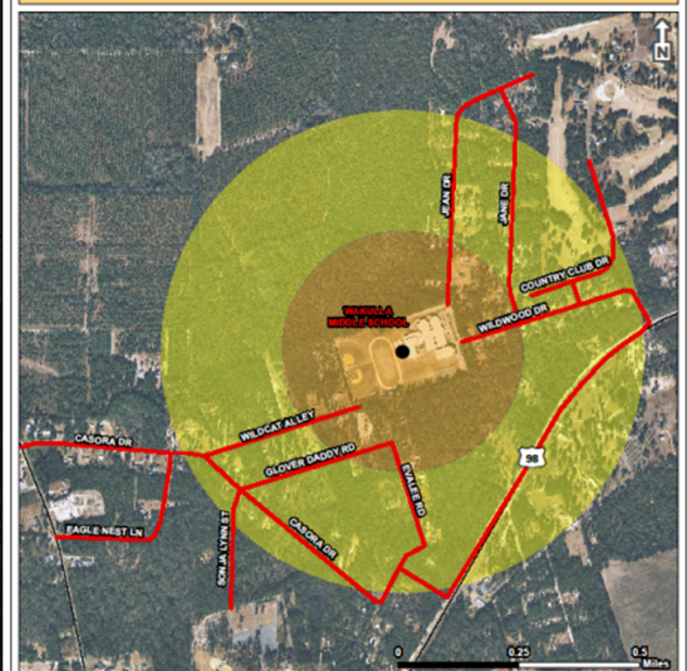
Safe Routes to Schools

CRAWFORDVILLE ELEMENTARY SCHOOL



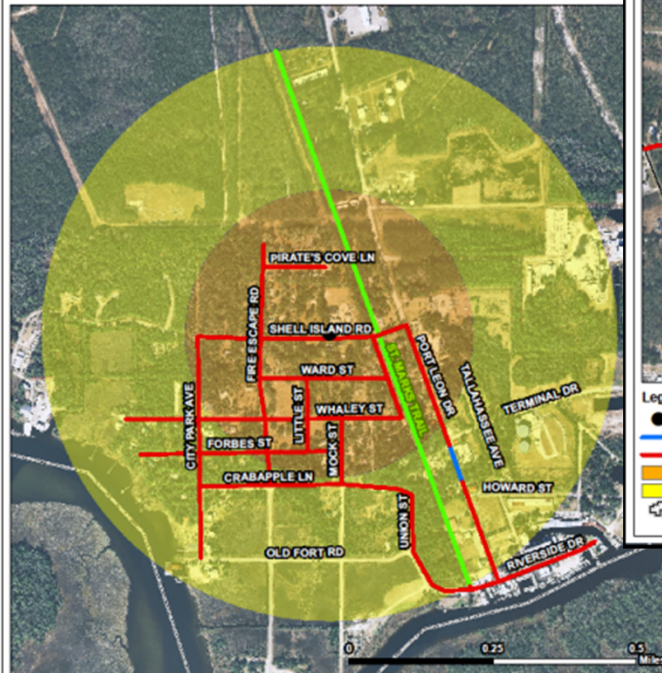
- Legend**
- School Locations
 - Existing Sidewalk
 - Multifuse Trail
 - Sidewalk Gap
 - 1/4 Mile School Buffer
 - 1/2 Mile School Buffer
 - City Limits

WAKULLA MIDDLE SCHOOL



- Legend**
- School Locations
 - Existing Sidewalk
 - Sidewalk Gap
 - 1/4 Mile School Buffer
 - 1/2 Mile School Buffer
 - City Limits

C.O.A.S.T. CHARTER SCHOOL

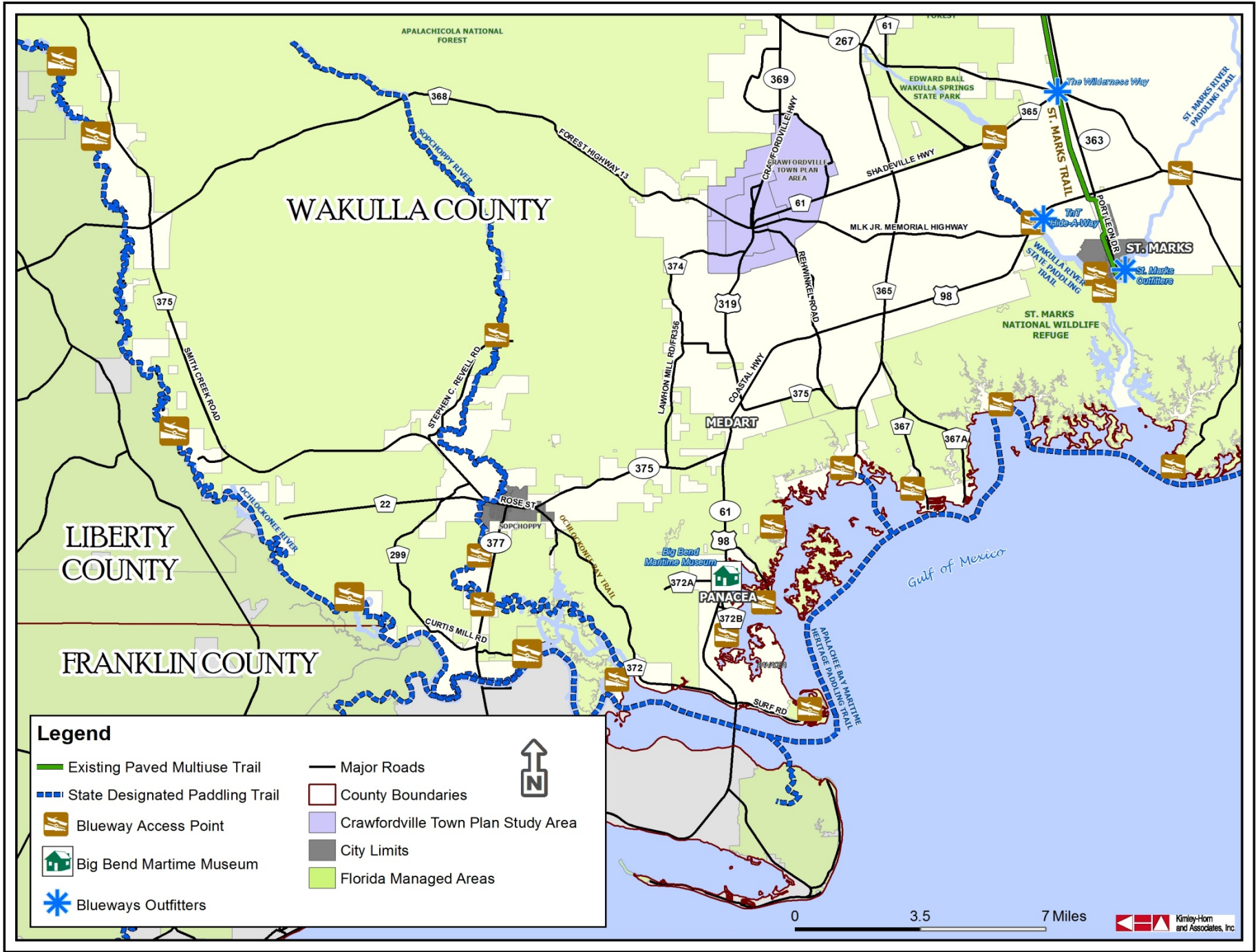


- Legend**
- School Locations
 - Existing Sidewalk
 - Multifuse Trail
 - Sidewalk Gap
 - 1/4 Mile School Buffer
 - 1/2 Mile School Buffer
 - City Limits



Blueway Recommendations

- Launch sites on the following rivers are suggested:
 - Sopchoppy River
 - Lower Ochlockonee River
 - Wakulla River
 - St. Marks River
 - Florida Circumnavigational Saltwater Paddling Trail
- Improve existing blueway infrastructure
- Wakulla County should pursue Blueway Community Designation






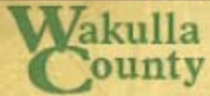
WAKULLA COUNTY

LIBERTY COUNTY

FRANKLIN COUNTY

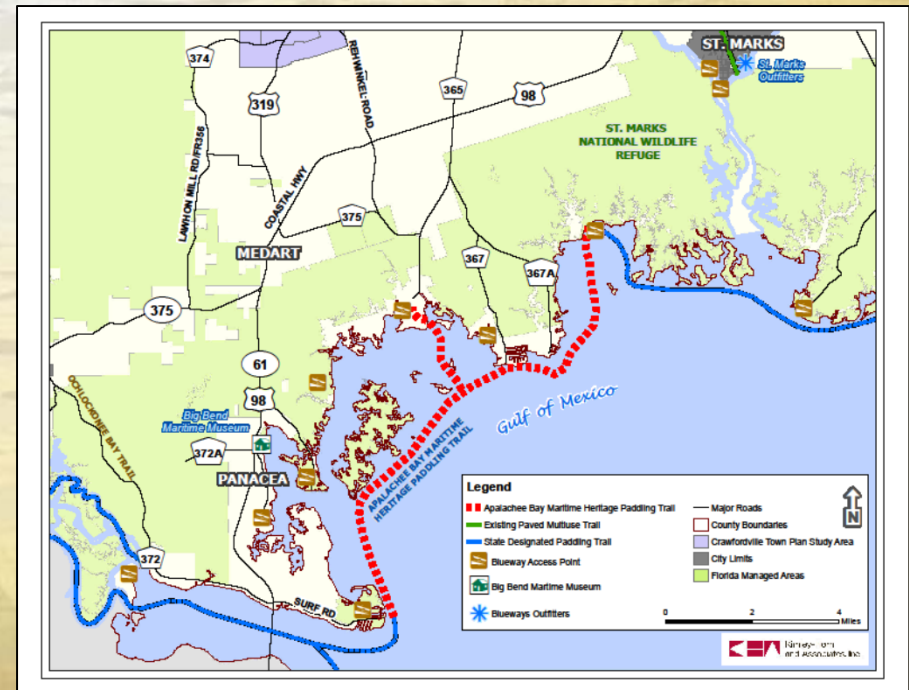
Legend

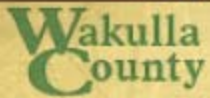
 Existing Paved Multiuse Trail	 Major Roads	
 State Designated Paddling Trail	 County Boundaries	
 Blueway Access Point	 Crawfordville Town Plan Study Area	
 Big Bend Maritime Museum	 City Limits	
 Blueways Outfitters	 Florida Managed Areas	



Blueway Routes and Tours

- Coordinate with TDC and Big Bend Scenic Byway
- Tours include:
 - Apalachee Bay Maritime Heritage Paddling Trail
 - Inside Passage to Spring Creek
 - Fort San Marcos to Lighthouse
 - Paddling Around Piney Island
 - Tale of Two Rivers
 - Ochlockonee River
 - Sopchoppy River





Wayfinding and Signage

- Gateways
- Kiosks
- Downtown banners
- Park signs
- Civic signs
- Landmark signs
- Directional signs for vehicular travelers
- Directional signs for cyclists
- Directional signs for pedestrians
- Blueway signs





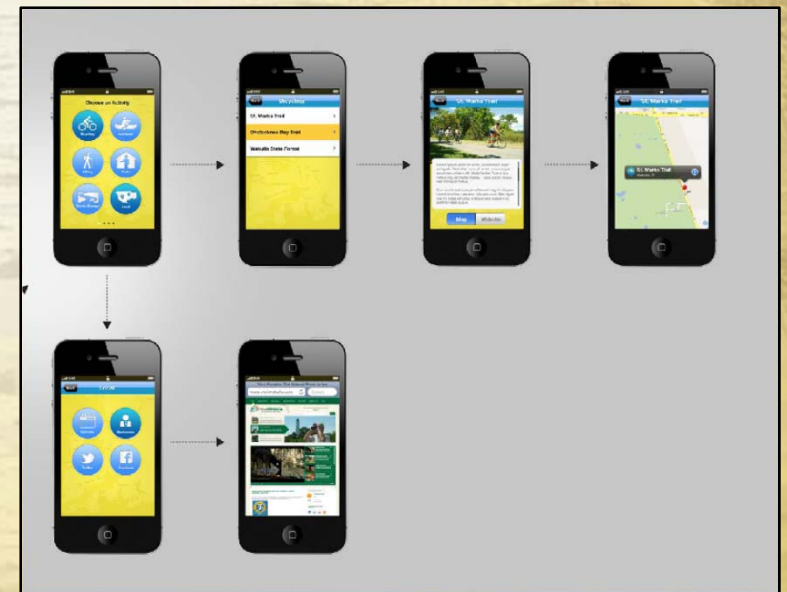
Implementation

- Bike-Ped Coordinator
- Bike-Ped Advisory Committee
- Adopt a trail program
- Incorporate into existing street maintenance program
- May need additional maintenance activities
- Economic benefit far outweigh operations and maintenance costs.



Mobile App

- First ecotourism app for a local government in Florida
- Intuitive user experience
- iPhone/iPod specific
- Can be expanded/upgraded
- Can be developed for Android





Funding Sources

- Piggybacking
- Public-Private Partnerships
- CRTPA
- VISIT FLORIDA Grants
- Office of Greenways and Trails-Recreational Trail Program
- Community Development Block Grant Program
- Florida Community Trust's Florida Forever Grant Program
- Transportation Enhancement Funds
- Bikes Belong Coalition Grant Program
- Coastal Partnerships Initiative
- National Scenic Byways Program
- Florida Recreation and Development Assistance Program
- Bike Florida Mini-Grants
- Safe Routes to Schools
- Potential CRA
- Optional sales tax
- Land and Water Conservation
- Florida Boating Improvement Program
- TIGER IV
- Others to be determined

WAKULLA COUNTY



Bicycle and Pedestrian Facilities Master Plan

