

ROUNDAABOUT POLICY

**Presentation to
CRTPA Board Meeting**

January 13, 2014

WHY A ROUNDABOUT POLICY?

The Roundabout Policy recommendation is based on several factors:

Numerous Documented Benefits –

- **Traffic Safety**
- **Operational Performance**
- **Environmental Factors**
- **Access Management**
- **Traffic Calming**
- **Pedestrian Safety**
- **Aesthetics**
- **Land Use**

Changes in FDOT Policy



Topic #625-000-007

January 1, 2013

Plans Preparation Manual, Volume 1 - English

Revised – January 1, 2014

2.13 Intersections

Design guides and criteria presented heretofore are also applicable to the proper design of intersections.

2.13.1 Roundabouts

The ***National Cooperative Highway Research Program (NCHRP) Report 672, Roundabouts: An Informational Guide***, is adopted by FHWA and establishes criteria and procedures for the justification, operational and safety analysis of modern roundabouts in the United States. In addition, the ***Florida Intersection Design Guide*** contains Florida centric guidelines and requirements for evaluation and design of roundabouts in Florida.

*Roundabouts **shall** be evaluated on new construction, reconstruction and safety improvement projects, as well as any time there are proposed changes in intersection control that will be more restrictive than the existing conditions.*

NCHRP

REPORT 672

NATIONAL
COOPERATIVE
HIGHWAY
RESEARCH
PROGRAM

Roundabouts: An Informational Guide

Second Edition

TRANSPORTATION RESEARCH BOARD
OF THE NATIONAL ACADEMIES

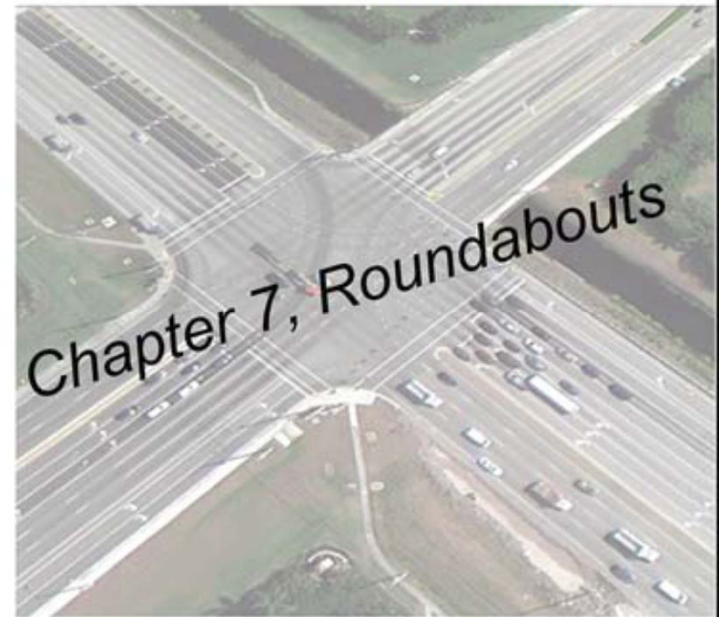
In Cooperation with



U.S. Department
of Transportation
Federal Highway
Administration

Florida Intersection Design Guide 2013

For New Construction and Major Reconstruction of
At-Grade Intersections on the State Highway System



Florida Department of Transportation
Office of Roadway Design

ROUNDABOUTS HERE AND ELSEWHERE

Monticello Roundabout – Intersection US 90 & US 19 – Jefferson County



Roundabout at Intersection of Jim Lee Rd & Orange Ave – Tallahassee



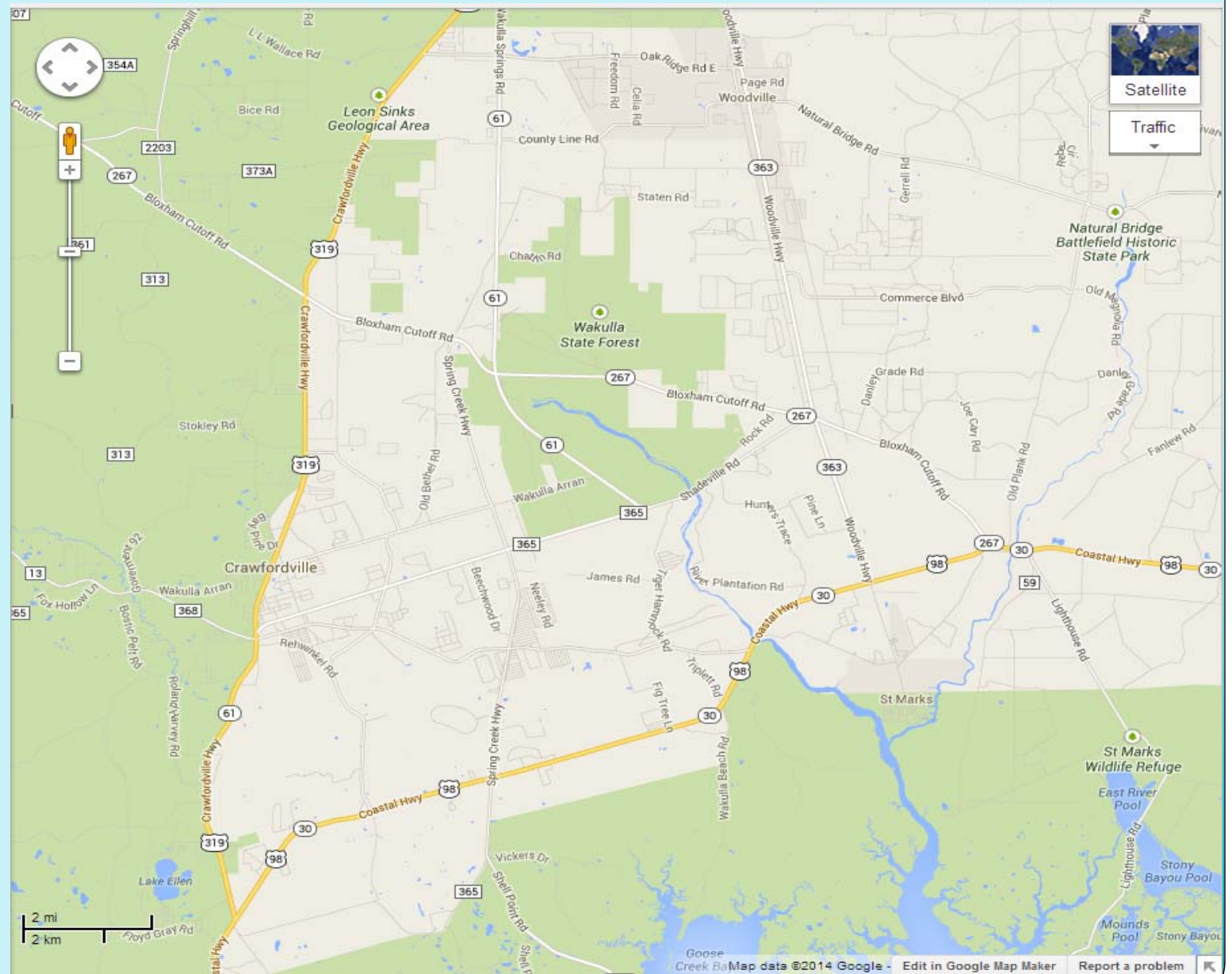
Roundabout at Intersection of Blair Stone Rd & Four Oaks Blvd – Southwood



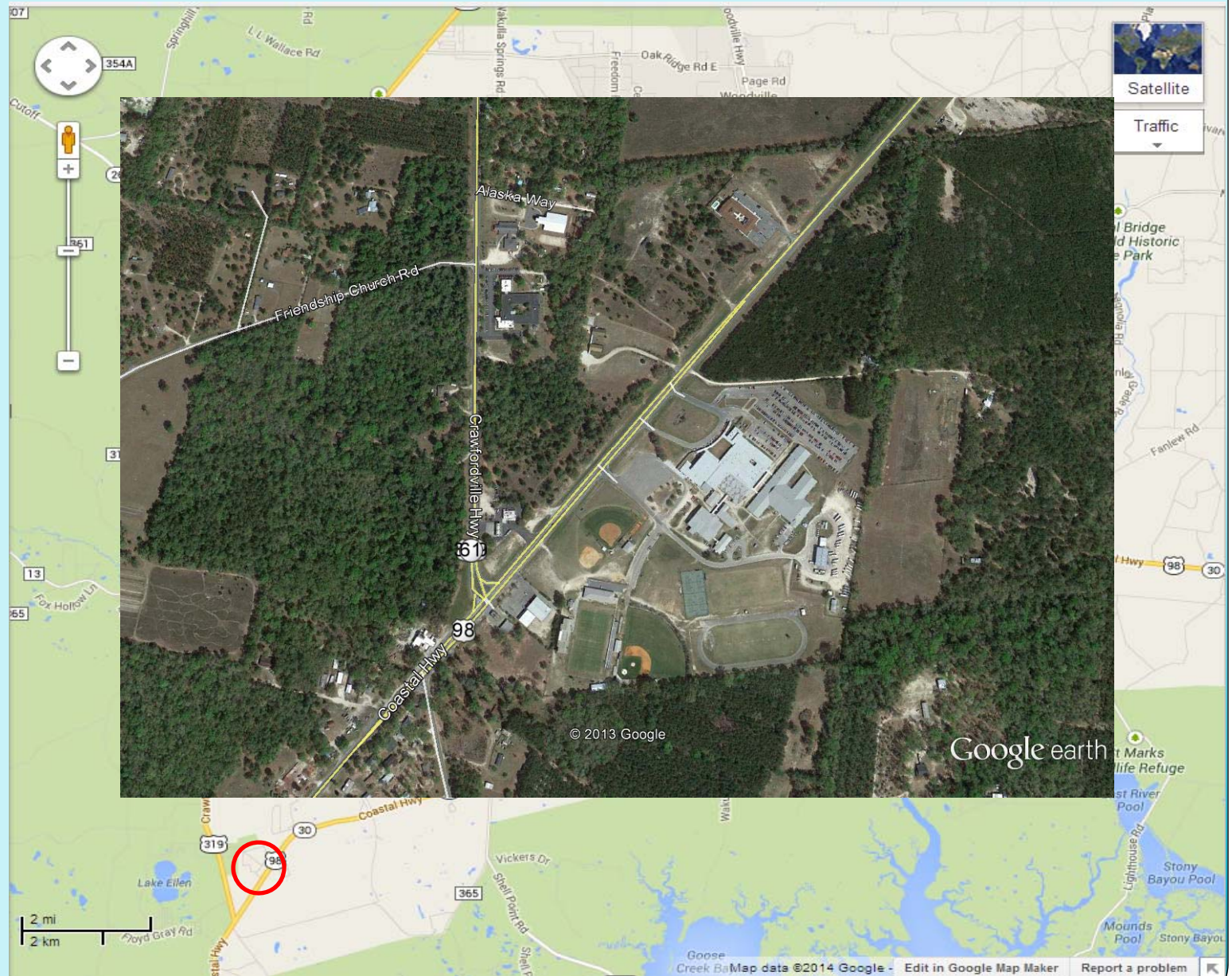
Roundabout at Intersection Killarney Way and Shamrock West – Killearn Estates



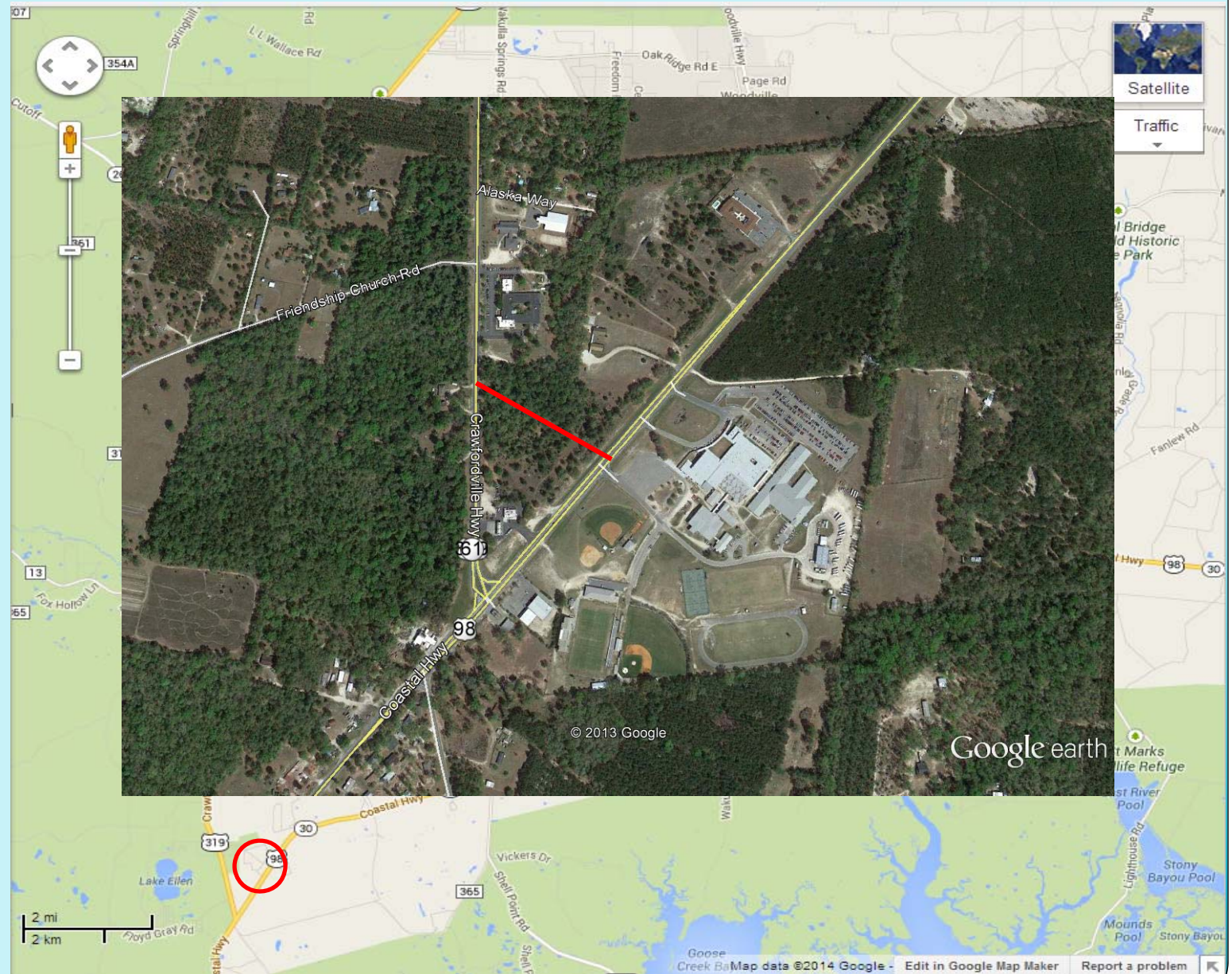
Potential
Roundabout
Locations
In
Wakulla County



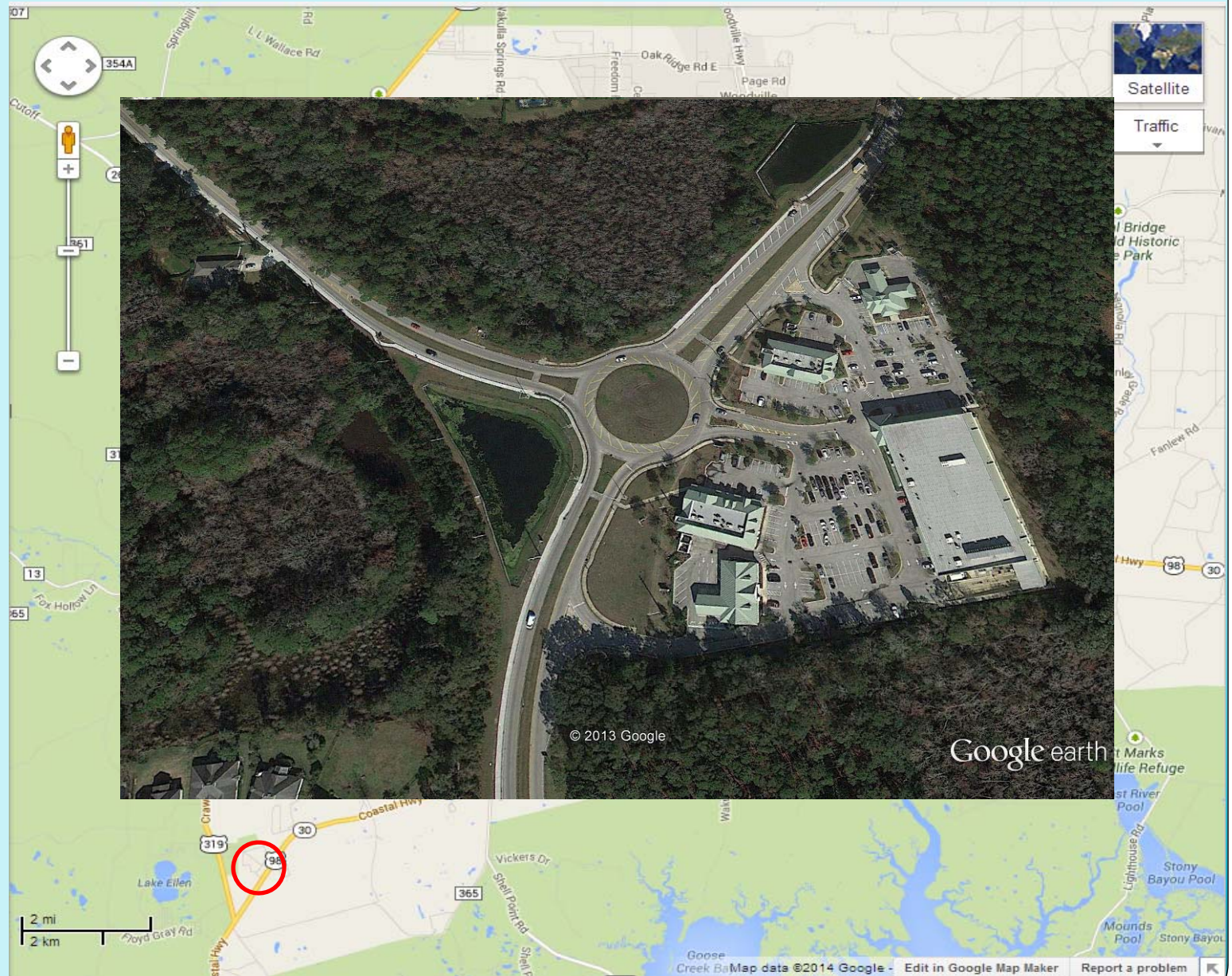
Potential
Roundabout
Locations
In
Wakulla County



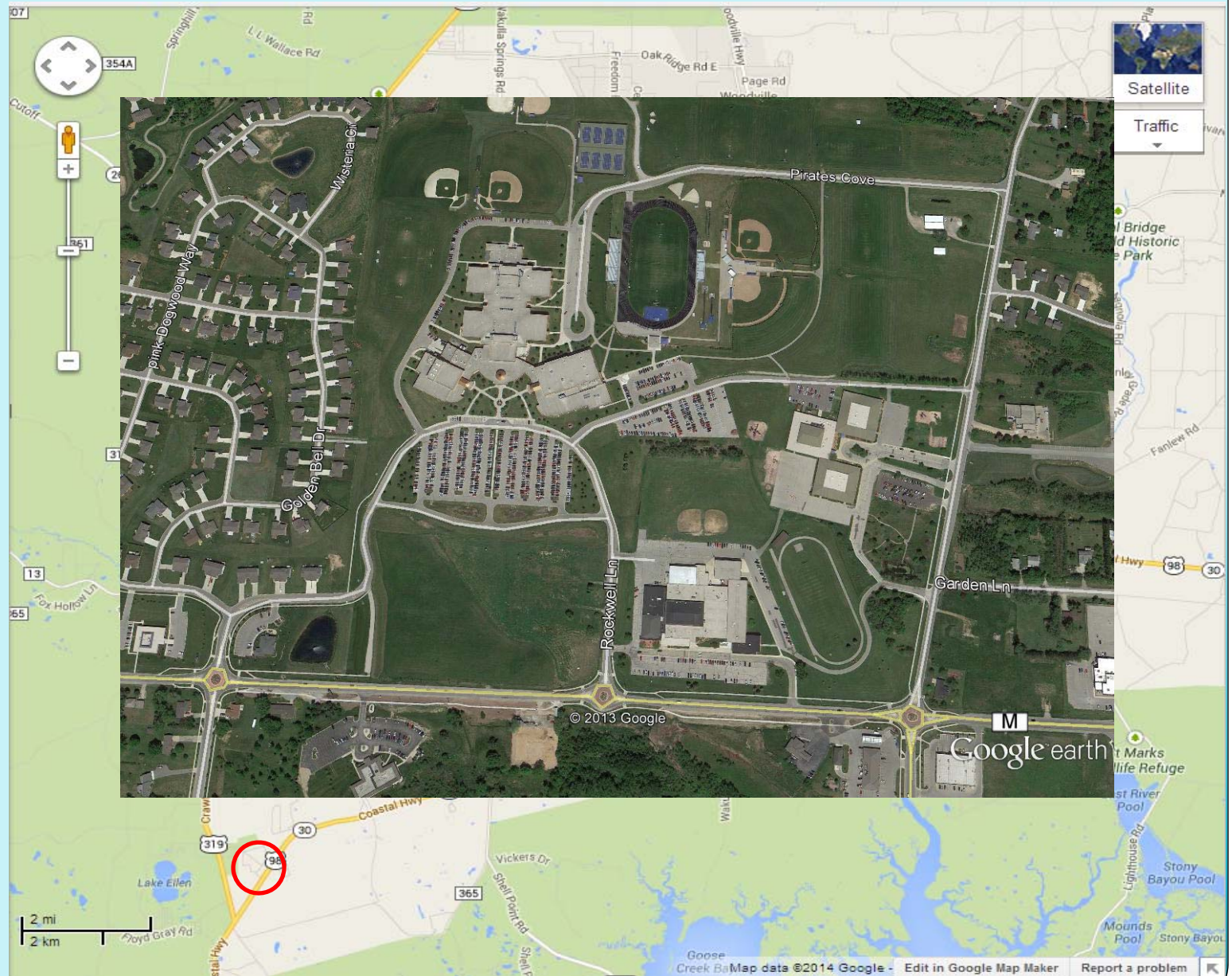
Potential
Roundabout
Locations
In
Wakulla County



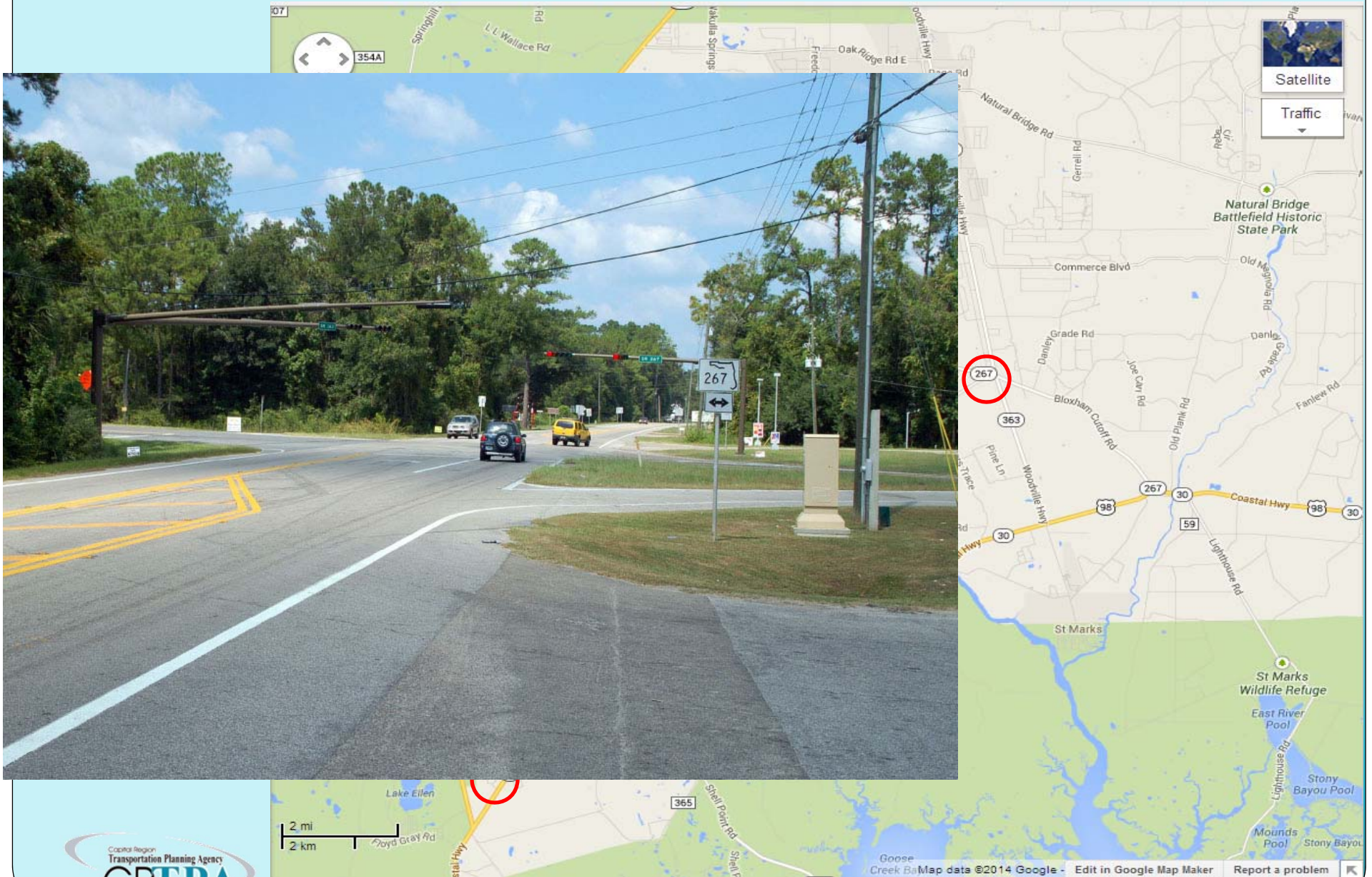
Potential Roundabout Locations In Wakulla County



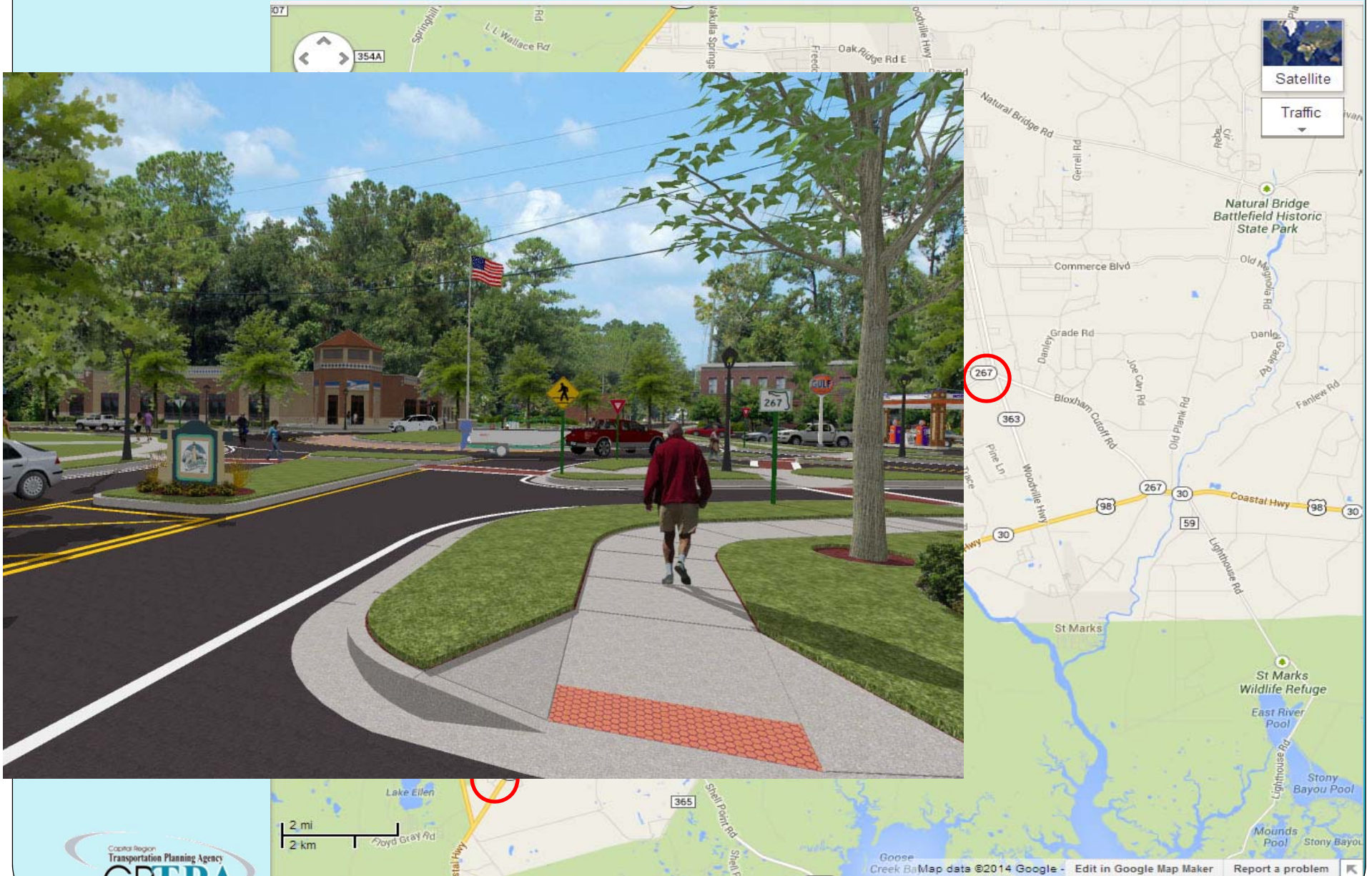
Potential
Roundabout
Locations
In
Wakulla County



Connecting People and Places



Connecting People and Places



Future
Roundabouts
Considered for
Lake Bradford Road,
FAMU Way and
Gaines Street



Future
Roundabouts
Considered for
Lake Bradford Road,
FAMU Way and
Gaines Street



Current Intersection at Lake Bradford Road and Gaines Street



Concept Intersection at Lake Bradford Road and Gaines Street



Underpass design for major roundabout



PRELIMINARY DESIGN - SUBJECT TO CHANGE

Pedestrian Underpass for major roundabout in Luxembourg



QUESTIONS?

Connecting People and Places

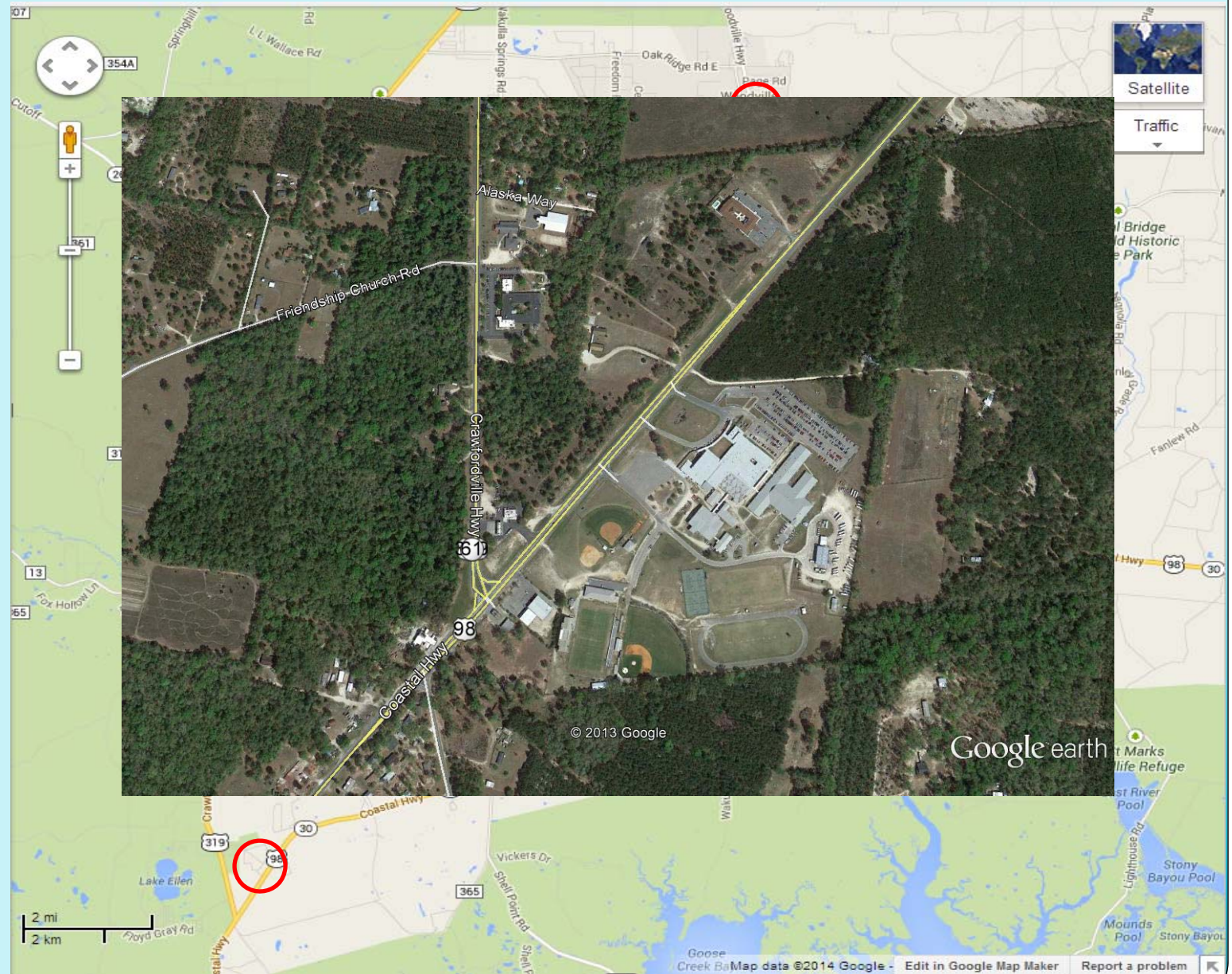
Connecting People and Places

Connecting People and Places

Connecting People and Places

Connecting People and Places

Potential
Roundabout
Locations
In
Wakulla County



Monticello Roundabout – Intersection US 90 & US 19 – Jefferson County

